



DEPARTMENT of PUBLIC WORKS

1717 WEST 162nd STREET / GARDENA, CALIFORNIA 90247-3731 / WWW.CITYOFGARDENA.ORG / PHONE (310) 217-9568

JULY 26, 2023
ADDENDUM NO. 1

TO: ALL SPECIFICATION HOLDERS

ADDENDUM NO. 1, AS DESCRIBED BELOW, IS FOR USE OF CONTRACTORS AND SUBCONTRACTORS SUBMITTING BIDS ON THIS PROJECT. ALL BIDDERS SHALL INDICATE ON THE BID PROPOSAL FORM (BP-5) THAT THEY HAVE RECEIVED THIS ADDENDUM NO. 1.

REVISION TO THE BID PROPOSAL (BP):

1. Reference the attached **Revised Bid Schedule dated July 26, 2023**, and to be submitted with bid. Bid item number 24 "Furnish and Install New ADA Push Button" and bid item 25 "Remove and Salvage Existing Push Button and Furnish and Install New ADA Push Button" have been revised to state Bid item 24 "Furnish and Install iNS iNavigator 3-Wire Push Button Station with iDetect Touchless Actuation Option" and bid Item 25 "Remove and Salvage Existing Push Button and Furnish and Install iNS iNavigator 3-Wire Push Button Station with iDetect Touchless Actuation Option" Also revisions to Notice

REVISION TO THE SPECIFICATIONS: ADD the following section:

SECTION 700-5.8.3 Pedestrian Push Buttons. Pedestrian push button assemblies and detector loops shall conform to the provisions of Section 86-5, "Detectors," of the State Standard Specifications and these Technical Provisions.

New pedestrian push buttons shall be ADA compliant iNS iNavigator 3-Wire Push Button Station with iDetect Touchless Actuation Option, or approved equal, with a stainless steel button, black body on a green frame. Pedestrian button signs shall conform to the details shown on the plans. Fasteners used shall be stainless steel tamper proof screws for pedestrian push-button assemblies. Pedestrian calls to the controller shall be independent, by phase, and not as concurrent thru-phase pairs. Pedestrian signal ground wires shall not have splices between the poles and the controller cabinet unless approved by the Engineer or his representative in the field. All pedestrian signal ground wires shall be joined and grounded within the controller cabinet.

REVISION TO THE APPENDICES:

Product information attached for compliant iNS iNavigator 3-Wire Push Button Station with iDetect Touchless Actuation Option pedestrian push buttons are added as Appendix C.

REVISION TO THE PLANS:

Revised Plan Sheets 1,4,5,6 and 8 are enclosed which depict the revisions to construction notes and installation of pedestrian push buttons at the Manhattan Beach, 156th Street, and Marine Avenue intersections.

REVISION TO THE NOTICE OF INVITING BIDS:

Revised Notice Inviting Bids page to reflect changes for accessing plans and specifications through ARC Document Solutions.

END OF ADDENDUM NO. 1

TASHA CERDA, Mayor / PAULETTE C. FRANCIS, Mayor Pro Tem
MARK E. HENDERSON, Councilmember / RODNEY G. TANAKA, Councilmember / WANDA LOVE, Councilmember
MINA SEMENZA, City Clerk / GUY MATO, City Treasurer / CLINT OSORIO, City Manager / CARMEN VASQUEZ, City Attorney

ADDENDUM #1

July 26, 2023

BID PROPOSAL (BP)

**VAN NESS AVENUE
FROM REDONDO BEACH BOULEVARD TO MARINE AVENUE**

PROJECT NO. JN 992

Contractor: _____

Address: _____

Phone: _____

Fax: _____

License No.: _____

D.I.R. No. _____

Email: _____

To Be Submitted

WITH

Bid Package

BID PROPOSAL

PROJECT NO. JN 992

BID SCHEDULE

The undersigned, having examined the proposed Contract Documents titled:

VAN NESS AVENUE FROM REDONDO BEACH BOULEVARD TO MARINE AVENUE

and having visited the site and examined the conditions affecting the work, hereby proposes and agrees to furnish all labor, materials, equipment, and appliances, and to perform operations necessary to complete the work as required by said proposed Contract Documents and itemized bid schedule below. All work shall be completed within **sixty (60) Working Days** from the date the Notice of Proceed is issued by the Engineer.

Item No.	Item Description	Unit	Approx. Quantity	Unit Price in Figures	Item Total
1	Traffic control	LS	1	\$	\$
2	Cold mill 2" thick AC	SF	110,000	\$	\$
3	Cold mill 3" thick AC	SF	7,000	\$	\$
4	Cold mill variable thickness AC	SF	43,000	\$	\$
5	Furnish and install 1" thick AC leveling course	TON	990	\$	\$
6	Furnish and install 2" thick asphalt rubber hot mix (ARHM)	TON	1,980	\$	\$
7	Remove and reconstruct 6" thick AC pavement	TON	370	\$	\$
8	Remove and reconstruct 6" thick PCC sidewalk per City Std. ST-5A	SF	100	\$	\$
9	Remove and reconstruct 4" thick PCC sidewalk per City Std. ST-5A	SF	2,600	\$	\$
10	Remove existing alley approach including 10' of existing PCC pavement and reconstruct	LS	1	\$	\$
11	Remove and reconstruct PCC curb and gutter, 8" CF over 6" CAB per City Std. ST-C, C1	LF	300	\$	\$
12	Construct 2" thick AC base course	TON	100	\$	\$
13	Remove and reconstruct PCC cross gutter per City Std. ST-3	SF	900	\$	\$

TO BE SUBMITTED WITH PROPOSAL

BID SCHEDULE (Continued)

Item No.	Item Description	Unit	Approx. Quantity	Unit Price in Figures	Item Total
14	Remove and reconstruct curb ramp per Caltrans Std. A88A	EA	9	\$	\$
15	Install cast-in-place truncated dome per Caltrans Std. A88A	EA	6	\$	\$
16	Construct full depth AC	TON	120	\$	\$
17	Remove existing driveway and replace with aggregate	LS	1	\$	\$
18	Remove and reconstruct 6" thick PCC pavement	SF	200	\$	\$
19	Adjust access openings to grade per City Std. ST-9	EA	31	\$	\$
20	Adjust MWD manhole to grade	EA	3	\$	\$
21	Relocate traffic signal pull box	EA	2	\$	\$
22	Adjust traffic signal pull box to grade	EA	6	\$	\$
23	Furnish and install traffic loops per City Std. ST-24	EA	23	\$	\$
24	Furnish and install iNS iNavigator 3-Wire Push Button Station with iDetect Touchless Actuation Option	EA	16	\$	\$
25	Remove and salvage existing push button and furnish and install iNS iNavigator 3-Wire Push Button Station with iDetect Touchless Actuation Option	EA	16	\$	\$
26	Battery back-up system on existing traffic signals	EA	4	\$	\$
27	Furnish and install traffic striping and signage per plan	LS	1	\$	\$
28	Remove existing tree	EA	1	\$	\$
29	Remove tree and stump and plant new tree, Bradford Pear	EA	3	\$	\$
30	Asphalt pavement cores	EA	8	\$	\$

TOTAL CONTRACT BID:

(Figures) \$ _____

(Words) _____

*** In case of error in extension of price into the total price column, the unit price will govern.**

All work required and shown on the construction plans and this specification for which no price or item is listed on this proposal, it shall be understood that such work, equipment, labor, tools and materials shall be provided without extra charge, allowance or direct payment of any kind. Payment for performing such work or furnishing such equipment, labor, tools and materials shall be included in the above lump sum or unit bid prices and no additional compensation will be paid therefor.

If the City determines that any of the unit bid prices are significantly unbalanced to the potential detriment of the City, the bid will be replaced as non-responsive.

In case of any discrepancy between the words and the figures, the words shall prevail. If the unit price and the total amount for any item are not in agreement, the unit price alone shall be considered to represent the bidder's intention and all totals will be corrected to conform thereto.

Attached hereto is cash, a certified check, a cashier's check, or a bidder's bond in the amount of _____ Dollar, said amount being not less than 10 percent of the amount bid. Pursuant to Public Contract Code Sections 20172 and 20174, it is agreed a portion equal to the difference between the low bid and second low bid shall be retained as a bid bond forfeiture by the City if the undersigned fails or refuses to execute the Contract and furnish the required bonds and certificates of insurance within the time provided.

Name of Bidder

Signature of Bidder

BID PROPSOAL

PROJECT NO. JN 992

ACKNOWLEDGEMENT OF ADDENDA RECEIVED

The Bidder shall acknowledge the receipt of addenda by number and date each addendum received.

Addendum No. ____ Date _____ Addendum No. ____ Date _____

Addendum No. ____ Date _____ Addendum No. ____ Date _____

Addendum No. ____ Date _____ Addendum No. ____ Date _____

Addenda will be issued only through the ARC Document Solutions and access under their Public Planroom (<https://www.e-arc/location/costamesa/>). It is the Bidder's sole responsibility to visit the Planroom to obtain and administer any Addendum related to this bid. **An Addendum must be acknowledged above by a bidder in its submitted form of Proposal.**

If an addendum or addenda have been issued by the City and not noted above as being received by the Bidder, the Bid Proposal may be rejected.

Bidder's Signature

Date

CITY OF GARDENA
NOTICE INVITING BIDS
for
VAN NESS AVENUE STREET IMPROVEMENTS
FROM REDONDO BEACH BOULEVARD TO MARINE AVENUE
PROJECT NO. JN 992

Plans and Specifications are available through ARC Document Solutions. Please be advised that there is an additional charge for delivery. Upon payment of the purchase price, they become the property of the purchaser and may not be returned for refund.

You may access the plans through the following website under Public Planroom:

<https://www.e-arc/location/costamesa/>
(Scroll down to "Planrooms" and click "Order from Planwell")
or

https://customer.e-arc.com/arcEOC/Secures/PWELL_PrivateList.aspx?PrjType=pub

For help accessing and ordering, please contact a Planwell Administrator at 562.436.9761.

Notice is hereby given that the City of Gardena will receive sealed bids at the office of the City Clerk, City Hall, 1700 W. 162nd Street, Gardena, California, until **2:00 PM** on **August 15, 2023**, and shortly thereafter on this same day, they will be publicly opened and read in the City Clerk's Office in-person and via ZOOM.

The information to join the bid opening via ZOOM is the following:

Topic: Bid Opening
Time: 2:00 PM on August 15, 2023, (Shortly thereafter the deadline)
Join ZOOM Meeting

Https://us02web.zoom.us/j/87608724186
Meeting ID: 87608724186
Dial by phone: +1 669 900 9128 US

Should you have any questions or concern in delivering a bid or joining the ZOOM Meeting, please contact City Clerk's office at (310) 217-9565 or via email at cityclerk@cityofgardena.org.

All bids must be in writing, must be sealed, and must be plainly marked on the outside: **"BID ON PROJECT NO. JN 992**. Any bid received after the hour stated above for any reason whatsoever, will not be considered for any purpose but will be returned unopened to the bidder.

Bids are required for the entire work as described below:

Work consists of excavation, asphalt concrete pavement, cold mill, asphalt rubber hot mix overlay, curb and gutter, sidewalk, cross gutter, adjustment of manholes and water valves to grade, curb ramps, striping and signage, traffic control, water pollution control and all other related work.

ADDENDUM #1

July 26, 2023



iDS: "iNS" iNavigator 3-Wire Push Button Station with iDetect Option & PedApp®

For standard APS functions and details, please see iNS Push Button Station Cut Sheet

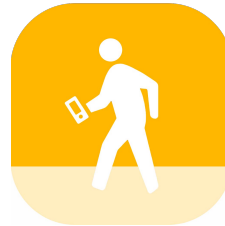
iDS = iDetect Touchless Actuation Option

- Detects movement typically within 1-4 inches, adjustable detection range of 1-20 inches
- Inconspicuous Radar Detection - Vandal Resistant
- Adjustable "Minimum Wave Detection Time" 0ms, 50ms, 250ms, & 500ms
- Detection not impeded by ice buildup

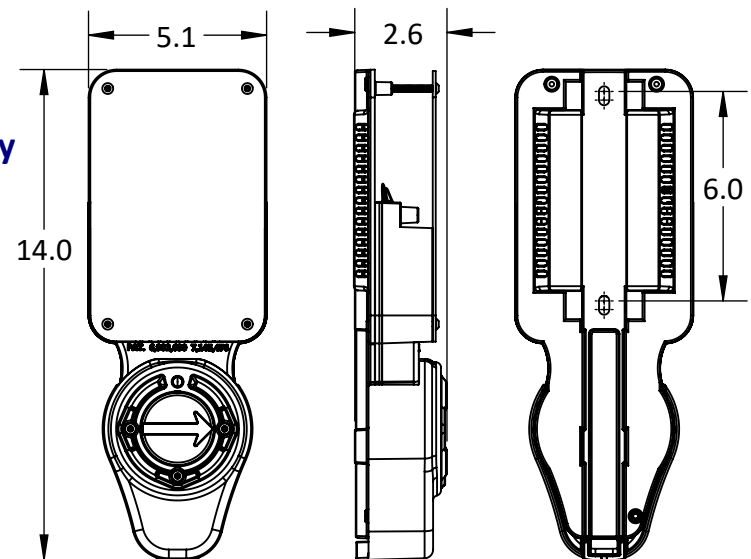
PedApp® - Smartphone App - Wireless Bluetooth® 5

(Available/compatible with iNS & iDS systems)

- For Visually impaired & all pedestrians, allows button actuation from phone via Bluetooth wireless technology
- Can provide intersection crossing information - location, directionality
- Provides same information as visual indications (Don't Walk, Walk, Ped Clearance, and audible countdown if programmed)
- Agency can control PedApp usage at intersections
- Works with "text to speech" in Smartphones
- Recommend agencies use/implement at pedestrian requested APS sites



9X12 Sign shown



Dimensions are inches

*The iNS3 replaces the iN3 and is backward compatible with the iPHCU3W.
See iNS3 Cut sheet for detailed list of features



Operating Specifications	
Parameter	Rating
Operating Temp. Range	-34°C to +74°C (-30°F to +165°F)†
Storage Temp. Range	-45°C to +85°C (-50°F to +185°F)
Operating Force	3.0 lbs max, option of 3 adjustable programmed forces
Switch Operating Life	Greater than 20 million operations
Max. Volume	100 dB @ 1 meter

Design Compliance	
Functionality Test Type	Compliance
Temperature and Humidity	MUTCD 2009-4E
Transient Voltage Protection	NEMA TS2
Transient Suppression	NEMA TS2
Mechanical Shock and Vibration	NEMA TS2
iNS3 PBS Enclosure	NEMA 250 Type 4X
Electrical Reliability	NEMA TS2

Notes:

1. Lab tested to applicable sections of referenced standards
2. All specifications are subject to change without notice
3. All specifications are typical unless otherwise specified

† iDetect touchless actuation will work as specified in the range of -20°C to -60°C (-4°F to +140°F). Detection could fluctuate and be reduced/less responsive outside of the specified range. All normal PBS functions will work through the extended NEMA temperature ranges. iDetect is an additional feature/supplement to the PBS.

iDS3

Additional Options

NA - No Arrow

BD - Bi-Directional Arrow

Other Options

WPC - With pole cap

ES - External Speaker option

Button Cover Color

Back plate is always black.

B - Black

G - Green

Y - Yellow

Audio Message Option

0 - Standard messages

1 - Custom Messages

Braille

N - No braille on faceplate

B - Braille on faceplate

Faceplate (Sign)

MUTCD Compliant

V - 9x12 R10-3

U - 9X12 R10-3b

T - 9x15 R10-3e

Non-MUTCD Compliant

A - 5x7- International

B - 5x7- International

C - 9X12- Countdown

D - 5X7 or 9x12- International

E - 5X7 Touchless

O - No Faceplate

R - 9X12 or 9X15 Touchless

Size of Front Plate Adapter

5 - 5" x 7"

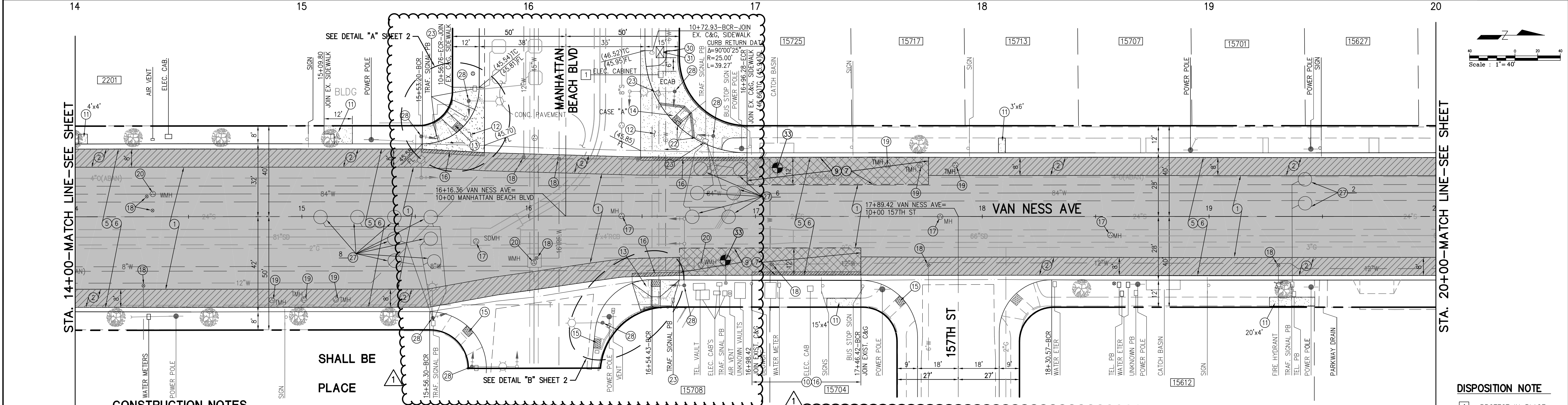
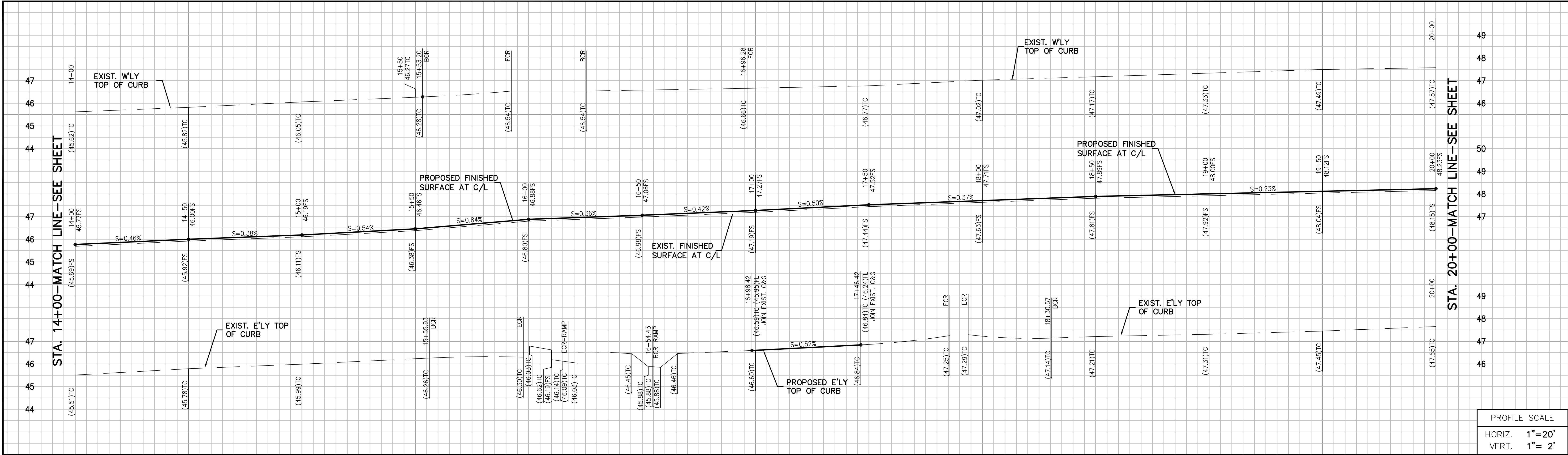
9 - 9" x 12"

3 - 9" x 15"

Navigator Family

iNS3 - iNavigator S 3-Wire Push Button without iDetect

iDS3 - with iDetect Option



CONSTRUCTION NOTES

- COLD MILL 2" THICK EXISTING PAVEMENT.
- EDGE GRIND - COLD MILL VARIABLE THICKNESS A.C. PAVEMENT PER DETAIL 2 SHEET 2.
- FURNISH AND CONSTRUCT 1" THICK (MIN) A.C. LEVELING COURSE, C2-PG64-10.
- FURNISH AND CONSTRUCT 2" THICK ASPHALT RUBBER HOT MIX (ARHM) C2-PG64-16 (WET PROCESS).
- COLD MILL VARIABLE THICKNESS A.C. PAVEMENT (TRANSITION FROM 4" TO 5" COLD MILL PER PLAN).
- CONSTRUCT 2" THICK AC BASE COURSE.
- REMOVE AND DISPOSE OF EXISTING CURB AND GUTTER. FURNISH AND RECONSTRUCT P.C.C. CURB AND GUTTER (8"CF) OVER 6" C.A.B. PER CITY OF GARDENA STD. PLAN ST-7 C-1. MATCH TO EXISTING CONDITION.
- REMOVE AND DISPOSE OF EXISTING SIDEWALK. FURNISH AND RECONSTRUCT 4" P.C.C. SIDEWALK OVER EXISTING RECOMPACTED SUBGRADE PER CITY STD. ST-5B.
- REMOVE AND DISPOSE OF EXISTING CROSS GUTTER. FURNISH AND RECONSTRUCT 8" P.C.C. CROSS GUTTER OVER 6" C.A.B. PER CITY STD. ST-3.

- SAWCUT, REMOVE AND RECONSTRUCT CURB RAMP PER CALTRANS STD. PLAN A88A, MODIFIED PER DETAIL SHEET 2.
- SAWCUT, REMOVE AND RECONSTRUCT CURB RAMP PER CALTRANS STD. PLAN A88A (CASE PER PLAN).
- SAWCUT AND REMOVE NECESSARY PORTION OF EXISTING RAMP AND CONSTRUCT CAST-IN-PLACE TRUNCATED DOMES PER CALTRANS STD. PLAN A88A.
- CONSTRUCT FULL DEPTH A.C. (2" WIDE 12" DEEP) PER CITY STANDARD. 6" ASPHALT OVER 6" C.A.B.
- ADJUST SEWER/STORM DRAIN MANHOLE TO GRADE.
- ADJUST WATER VALVE TO GRADE (PER GENERAL NOTE 36).
- ADJUST TELEPHONE MANHOLE TO GRADE (PER GENERAL NOTE 36).
- ADJUST M.W.D. MANHOLE TO GRADE.
- RELOCATE TRAFFIC SIGNAL PULL BOX.
- ADJUST TRAFFIC SIGNAL PULL BOX TO GRADE.

- REMOVE AND SALVAGE EXISTING PUSH BUTTON, FURNISH AND INSTALL "INS" INAVIGATOR 3-WIRE PUSH BUTTON STATION WITH DETECT TOUCHLESS ACTUATION OPTION AS SPECIFIED IN PROJECT SPECIFICATIONS.
- FURNISH AND INSTALL NEW BBS CABINET AS SPECIFIED IN PROJECT SPECIFICATIONS.
- REMOVE EXISTING TREE.
- CONDUCT PAVEMENT CORES IN ACCORDANCE WITH PROJECT SPECIFICATIONS.

CONSTRUCTION LEGEND

- COLD MILL 2" THICK AND CONSTRUCT 1" LEVELING COURSE AND 2" ARHM OVERLAY
- EDGE GRIND VARIABLE THICKNESS
- CORING LOCATION

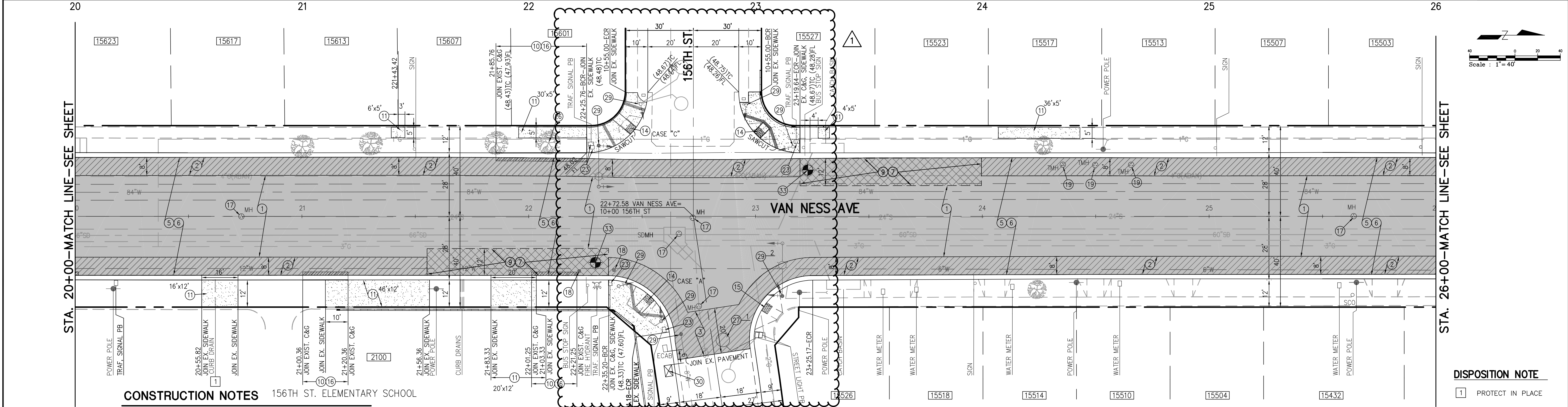
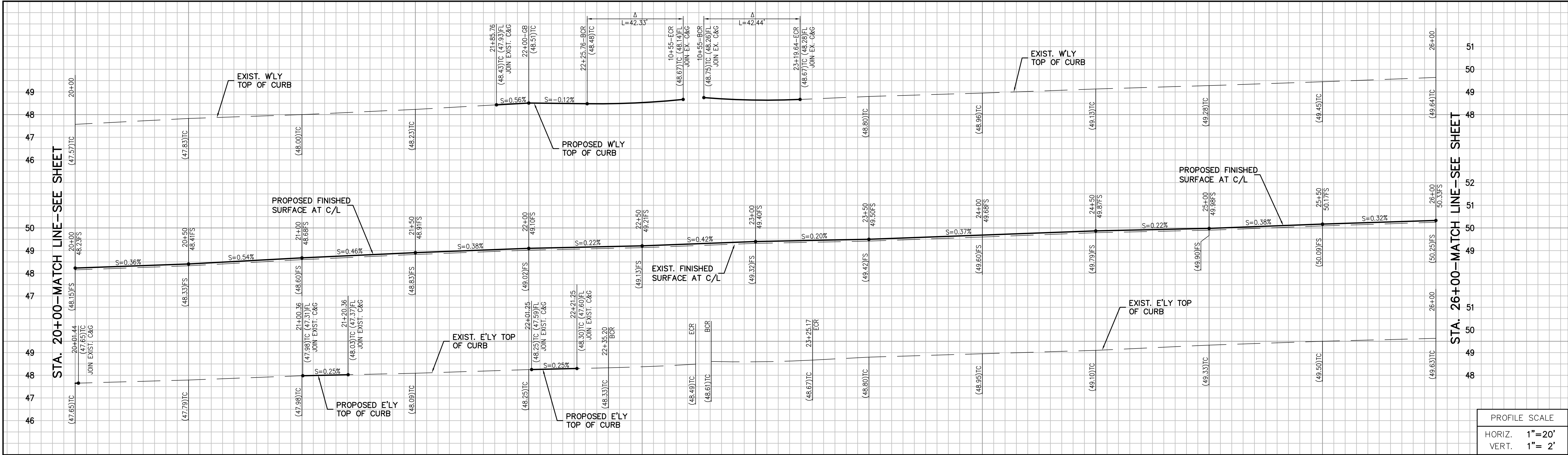
PREPARED BY:

DMS
CONSULTANTS, INC.
CIVIL ENGINEERS
12011 VAN NESS AVE. GARDENA, CA 90248 P. 714-740-8840 F. 714-740-8846
SURENDER M. DEWAN RCE 34559 EXP. 9/30/23



NO.	REVISIONS	DATE	BY	APP
1	BID ADDENDUM # 1	07/26/23	SD	

CITY OF GARDENA				ENGINEERING DIVISION	
DEPARTMENT OF PUBLIC WORKS				PROJECT:	
				VAN NESS AVE STREET IMPROVEMENT-JN 992	
				LIMITS: REDONDO BEACH BLVD TO MARINE AVE.	
F.B. REF.				APPROVED BY:	
DESIGNED BY: S.D.				05/10/2022	
DRAWN BY: H.N.				05/10/2022	
CHECKED BY: S.D.				05/10/2022	
SHT. 4 OF 11				DWG NO. 8-1069	



- 1 COLD MILL 2" THICK EXISTING PAVEMENT.
- 2 EDGE GRIND — COLD MILL VARIABLE THICKNESS A.C. PAVEMENT PER DETAIL 2 SHEET 2.
- 3 EDGE GRIND — COLD MILL VARIABLE THICKNESS A.C. PAVEMENT (TRANSITION FROM 2"—3" VARIABLE) TO 3" COLD MILL. L=20'
- 5 FURNISH AND CONSTRUCT 1" THICK (MIN) A.C. LEVELING COURSE, C2—PG64—10.
- 6 FURNISH AND CONSTRUCT 2" THICK ASPHALT RUBBER HOT MIX (ARHM) C2—PG64—16 (WET PROCESS).
- 7 COLD MILL VARIABLE THICKNESS A.C. PAVEMENT (TRANSITION FROM 4" TO 5" COLD MILL PER PLAN).
- 9 CONSTRUCT 2" THICK AC BASE COURSE.
- 10 REMOVE AND DISPOSE OF EXISTING CURB AND GUTTER. FURNISH AND RECONSTRUCT P.C.C. CURB AND GUTTER (8"CF) OVER 6" C.A.B. PER CITY OF GARDENA STD. PLAN ST—7 C-1. MATCH TO EXISTING CONDITION.
- 11 REMOVE AND DISPOSE OF EXISTING SIDEWALK. FURNISH AND RECONSTRUCT 4" P.C.C. SIDEWALK OVER EXISTING RECOMPACTED SUBGRADE PER CITY STD. ST—5B.
- 14 SAWCUT, REMOVE AND RECONSTRUCT CURB RAMP PER CALTRANS STD. PLAN A88A (CASE PER PLAN).
- 15 SAWCUT AND REMOVE NECESSARY PORTION OF EXISTING RAMP AND CONSTRUCT CAST-IN-PLACE TRUNCATED DOMES PER CALTRANS STD. PLAN A88A.
- 16 CONSTRUCT FULL DEPTH A.C. (2' WIDE 12" DEEP) PER CITY STANDARD. 6" ASPHALT OVER 6" C.A.B.
- 17 ADJUST SEWER/STORM DRAIN MANHOLE TO GRADE.
- 18 ADJUST WATER VALVE TO GRADE (PER GENERAL NOTE 36).
- 19 ADJUST TELEPHONE MANHOLE TO GRADE (PER GENERAL NOTE 36).
- 26 REMOVE TREE AND STUMP AND PLAN NEW TREE, BRADFORD PEAR.

- 29 FURNISH AND INSTALL "INS" NAVIGATOR 3—WIRE PUSH BUTTON STATION WITH IDETECT TOUCHLESS ACTUATION OPTION AS SPECIFIED IN PROJECT SPECIFICATIONS.
- 30 FURNISH AND INSTALL NEW BBS CABINET AS SPECIFIED IN PROJECT SPECIFICATIONS.
- 33 CONDUCT PAVEMENT CORES IN ACCORDANCE WITH PROJECT SPECIFICATIONS.

CONSTRUCTION LEGEND

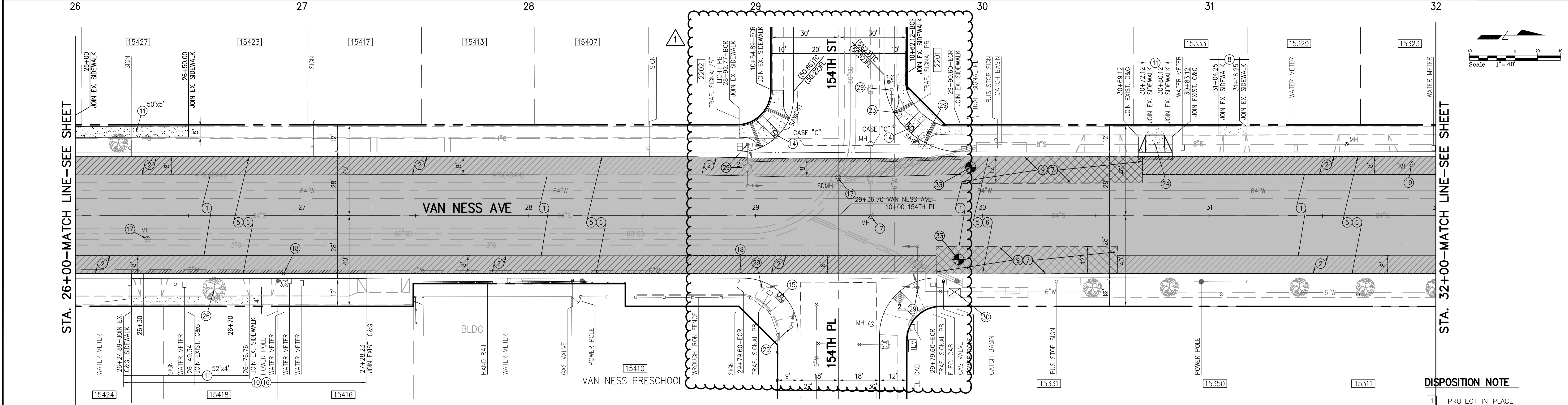
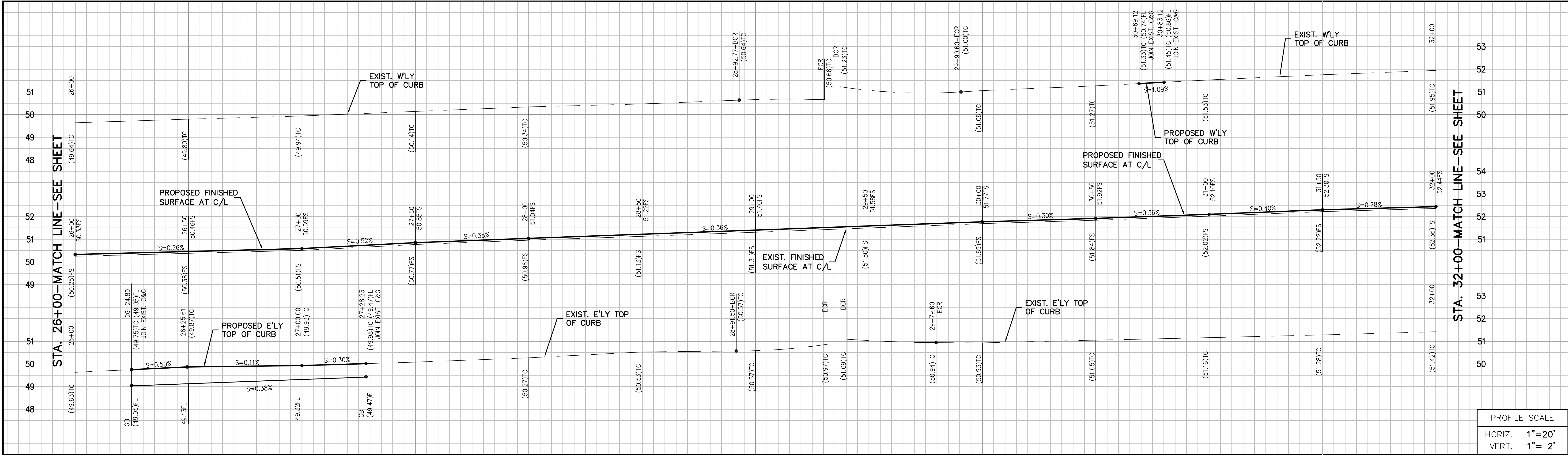
- COLD MILL 2" THICK AND CONSTRUCT 1" LEVELING COURSE AND 2" ARHM OVERLAY
- EDGE GRIND VARIABLE THICKNESS
- CORING LOCATION

PREPARED BY:

DMS
CONSULTANTS, INC.
CITY ENGINEERS
10371 LARK CIRCLE, GARDENA, CA 90248 P. 714-740-8840 F. 714-740-8846
SURENDER M. DEWAN RCE 34559 EXP. 9/30/23



NO.		REVISIONS		DATE		BY		APP		CITY OF GARDENA											
1		BID ADDENDUM # 1		07/26/23		SD				DEPARTMENT OF PUBLIC WORKS					ENGINEERING DIVISION						
										PROJECT: VAN NESS AVE STREET IMPROVEMENT-JN 992											
										LIMITS: REDONDO BEACH BLVD TO MARINE AVE.											
										F.B. REF.				APPROVED BY:							
										DESIGNED BY		S.D.		05/10/2022							
										DRAWN BY		H.N.		05/10/2022		PUBLIC WORKS ENGINEERING DIVISION					
										CHECKED BY		S.D.		05/10/2022		SHT 5 OF 11		DWG NO. 8-1069			



CONSTRUCTION NOTES

- 1 COLD MILL 2" THICK EXISTING PAVEMENT.
- 2 EDGE GRIND - COLD MILL VARIABLE THICKNESS A.C. PAVEMENT PER DETAIL 2 SHEET 2.
- 5 FURNISH AND CONSTRUCT 1" THICK (MIN) A.C. LEVELING COURSE, C2-PG64-10.
- 6 FURNISH AND CONSTRUCT 2" THICK ASPHALT RUBBER HOT MIX (ARHM) C2-PG64-16 (WET PROCESS).
- 7 COLD MILL VARIABLE THICKNESS A.C. PAVEMENT (TRANSITION FROM 4" TO 5" COLD MILL PER PLAN).
- 8 REMOVE AND RECONSTRUCT 6" THICK PCC SIDEWALK (BEHIND DRIVEWAY).
- 9 CONSTRUCT 2" THICK AC BASE COURSE.
- 10 REMOVE AND DISPOSE OF EXISTING CURB AND GUTTER. FURNISH AND RECONSTRUCT P.C.C. CURB AND GUTTER (8"CF) OVER 6" C.A.B. PER CITY OF GARDENA STD. PLAN ST-7 C-1. MATCH TO EXISTING CONDITION.

- 11 REMOVE AND DISPOSE OF EXISTING SIDEWALK. FURNISH AND RECONSTRUCT 4" P.C.C. SIDEWALK OVER EXISTING RECOMPACTED SUBGRADE PER CITY STD. ST-5B.
- 15 SAWCUT AND REMOVE NECESSARY PORTION OF EXISTING RAMP AND CONSTRUCT CAST-IN-PLACE TRUNCATED DOMES PER CALTRANS STD. PLAN A88A.
- 16 CONSTRUCT FULL DEPTH A.C. (2' WIDE 12" DEEP) PER CITY STANDARD. 6" ASPHALT OVER 6" C.A.B.
- 17 ADJUST SEWER/STORM DRAIN MANHOLE TO GRADE.
- 18 ADJUST WATER VALVE TO GRADE (PER GENERAL NOTE 36).
- 19 ADJUST TELEPHONE MANHOLE TO GRADE (PER GENERAL NOTE 36).
- 24 REMOVE EXISTING DRIVEWAY AND REPLACE WITH AGGREGATE TO MATCH TO ADJACENT IN PARKWAY.
- 26 REMOVE TREE AND STUMP AND PLAN NEW TREE, BRADFORD PEAR.

- 29 FURNISH AND INSTALL "INS" NAVIGATOR 3-WIRE PUSH BUTTON STATION WITH IDETECT TOUCHLESS ACTUATION OPTION AS SPECIFIED IN PROJECT SPECIFICATIONS.
- 30 FURNISH AND INSTALL NEW BBS CABINET AS SPECIFIED IN PROJECT SPECIFICATIONS.
- 33 CONDUCT PAVEMENT CORES IN ACCORDANCE WITH PROJECT SPECIFICATIONS.

CONSTRUCTION LEGEND

- COLD MILL 2" THICK AND CONSTRUCT 1" LEVELING COURSE AND 2" ARHM OVERLAY
- EDGE GRIND VARIABLE THICKNESS
- CORING LOCATION

PREPARED BY:

DMS

CONSULTANTS, INC.

CIVIL ENGINEERS

12011 VAN NESS BLVD, GARDENA, CA 90248 P. 714-740-8840 F. 714-740-8842

SURENDER M. DEWAN RCE 34559 EXP. 9/30/23

REGISTERED PROFESSIONAL ENGINEER

SURENDER M. DEWAN

NO. 34559

Exp. 9/30/23

CIVIL

STATE OF CALIFORNIA

NO.	REVISIONS	DATE	BY	APP
1	BID ADDENDUM # 1	07/26/23	SD	

CITY OF GARDENA

DEPARTMENT OF PUBLIC WORKS

ENGINEERING DIVISION

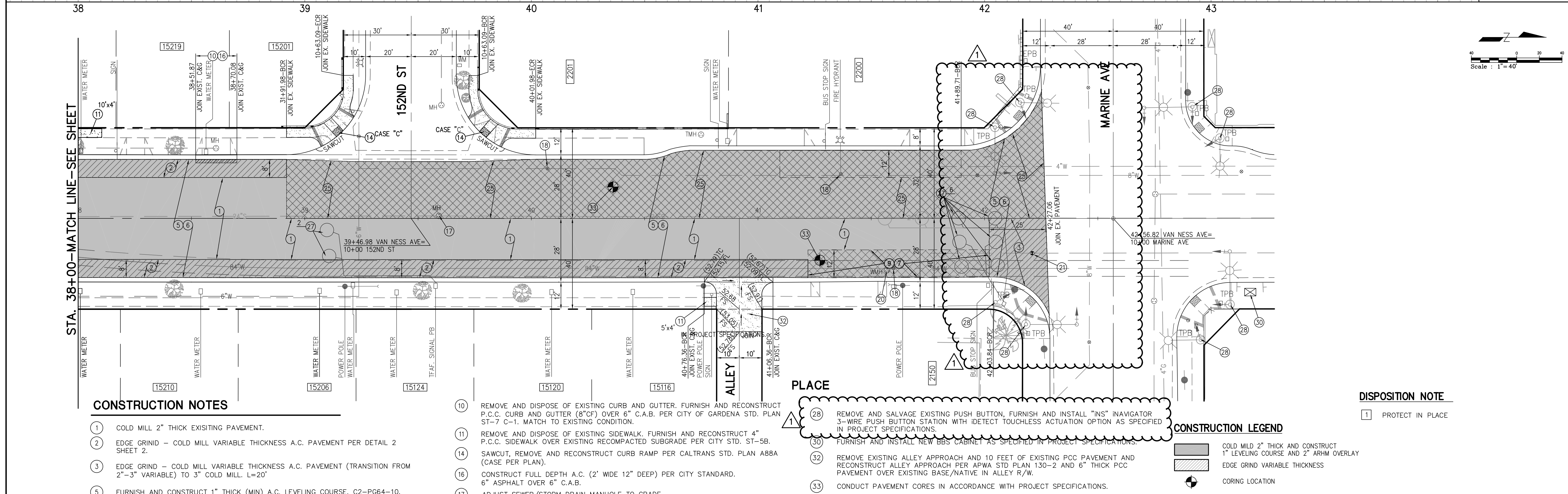
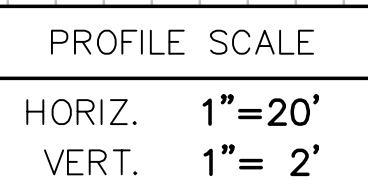
PROJECT: **VAN NESS AVE STREET IMPROVEMENT-JN 992**

LIMITS: REDONDO BEACH BLVD TO MARINE AVE.

F.B. REF.	.	.	APPROVED BY:
DESIGNED BY	S.D.	05/10/2022	
DRAWN BY	H.N.	05/10/2022	
CHECKED BY	S.D.	05/10/2022	

SHT. **6** OF **11**


DWG NO. **8-1069**



- (10) REMOVE AND DISPOSE OF EXISTING CURB AND GUTTER. FURNISH AND RECONSTRUCT P.C.C. CURB AND GUTTER (8"CF) OVER 6" C.A.B. PER CITY OF GARDENA STD. PLAN ST-7 C-1. MATCH TO EXISTING CONDITION.
- (11) REMOVE AND DISPOSE OF EXISTING SIDEWALK. FURNISH AND RECONSTRUCT 4" P.C.C. SIDEWALK OVER EXISTING RECOMPACTED SUBGRADE PER CITY STD. ST-5B.
- (14) SAWCUT, REMOVE AND RECONSTRUCT CURB RAMP PER CALTRANS STD. PLAN A88A (CASE PER PLAN).
- (16) CONSTRUCT FULL DEPTH A.C. (2' WIDE 12" DEEP) PER CITY STANDARD. 6" ASPHALT OVER 6" C.A.B.
- (17) ADJUST SEWER/STORM DRAIN MANHOLE TO GRADE.
- (18) ADJUST WATER VALVE TO GRADE (PER GENERAL NOTE 36).
- (20) ADJUST M.W.D. MANHOLE TO GRADE.
- (21) ADJUST GAS VALVE TO GRADE (PER GENERAL NOTE 36).
- (25) REMOVE EXISTING PAVEMENT AND RECONSTRUCT 6" A.C. OVER EXISTING BASE (LEAVE 3" BELOW FINISHED SURFACE).
- (27) INSTALL 6" DIAMETER TRAFFIC LOOPS AND SPLICE IN PULL BOX PER CITY STD. ST-24.

- (28) REMOVE AND SALVAGE EXISTING PUSH BUTTON, FURNISH AND INSTALL "INS" NAVIGATOR 3-WIRE PUSH BUTTON STATION WITH IDETECT TOUCHLESS ACTUATION OPTION AS SPECIFIED IN PROJECT SPECIFICATIONS.
- (30) FURNISH AND INSTALL NEW BBS CABINET AS SPECIFIED IN PROJECT SPECIFICATIONS.
- (32) REMOVE EXISTING ALLEY APPROACH AND 10 FEET OF EXISTING PCC PAVEMENT AND RECONSTRUCT ALLEY APPROACH PER APWA STD PLAN 130-2 AND 6" THICK PCC PAVEMENT OVER EXISTING BASE/NATIVE IN ALLEY R/W.
- (33) CONDUCT PAVEMENT CORES IN ACCORDANCE WITH PROJECT SPECIFICATIONS.

1 PROTECT IN PLACE

	COLD MILD 2" THICK AND CONSTRUCT 1" LEVELING COURSE AND 2" ARHM OVERLAY
	EDGE GRIND VARIABLE THICKNESS

 CORING LOCATION

PREPARED BY:

DMS

CONSULTANTS, INC.

CIVIL ENGINEERS

12371 Leola St., El Cerrito, CA 94601

12371 Leola St., El Cerrito, CA 94601 P. 714-740-8840 F. 714-740-8842

AWD

02/22/23

SURENDER M. DEWAN

RCE 34559

EXP. 9/30/23

REGISTERED PROFESSIONAL ENGINEER

SURENDER M. DEWAN

NO. 34559

Exp. 9/30/23

CIVIL

STATE OF CALIFORNIA

NO.	REVISIONS	DATE	BY	APP
1	BID ADDENDUM # 1	07/26/23	SD	

CITY OF GARDENA

DEPARTMENT OF PUBLIC WORKS

ENGINEERING DIVISION

PROJECT: VAN NESS AVE STREET IMPROVEMENT-JN 992

LIMITS: REDONDO BEACH BLVD TO MARINE AVE.

F.B. REF.

DESIGNED BY S.D.

DRAWN BY H.N.

CHECKED BY S.D.

APPROVED BY:

05/10/2022

05/10/2022

05/10/2022

PUBLIC WORKS ENGINEERING DIVISION

SHT 8 OF 11

DWG NO. 8-1089