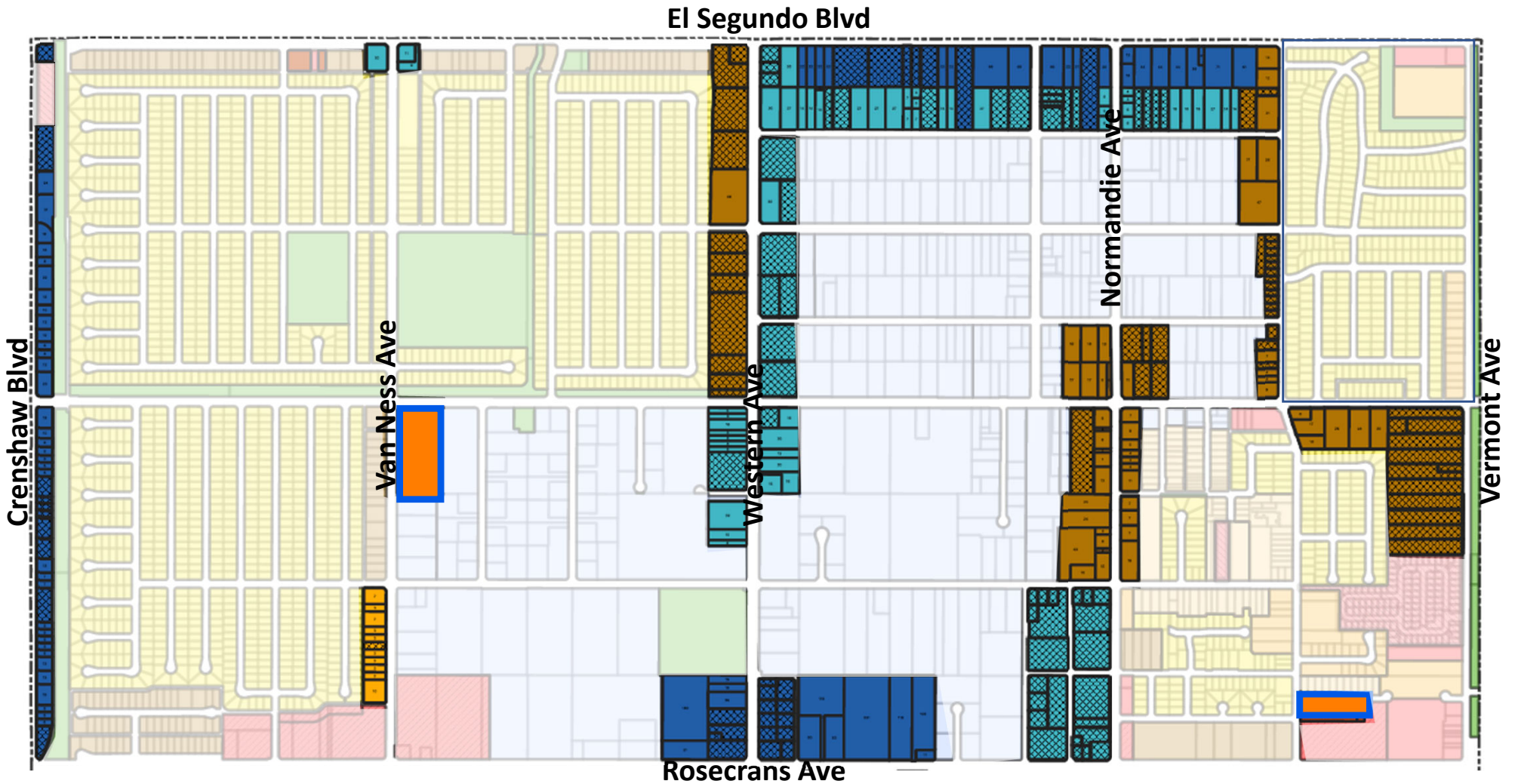


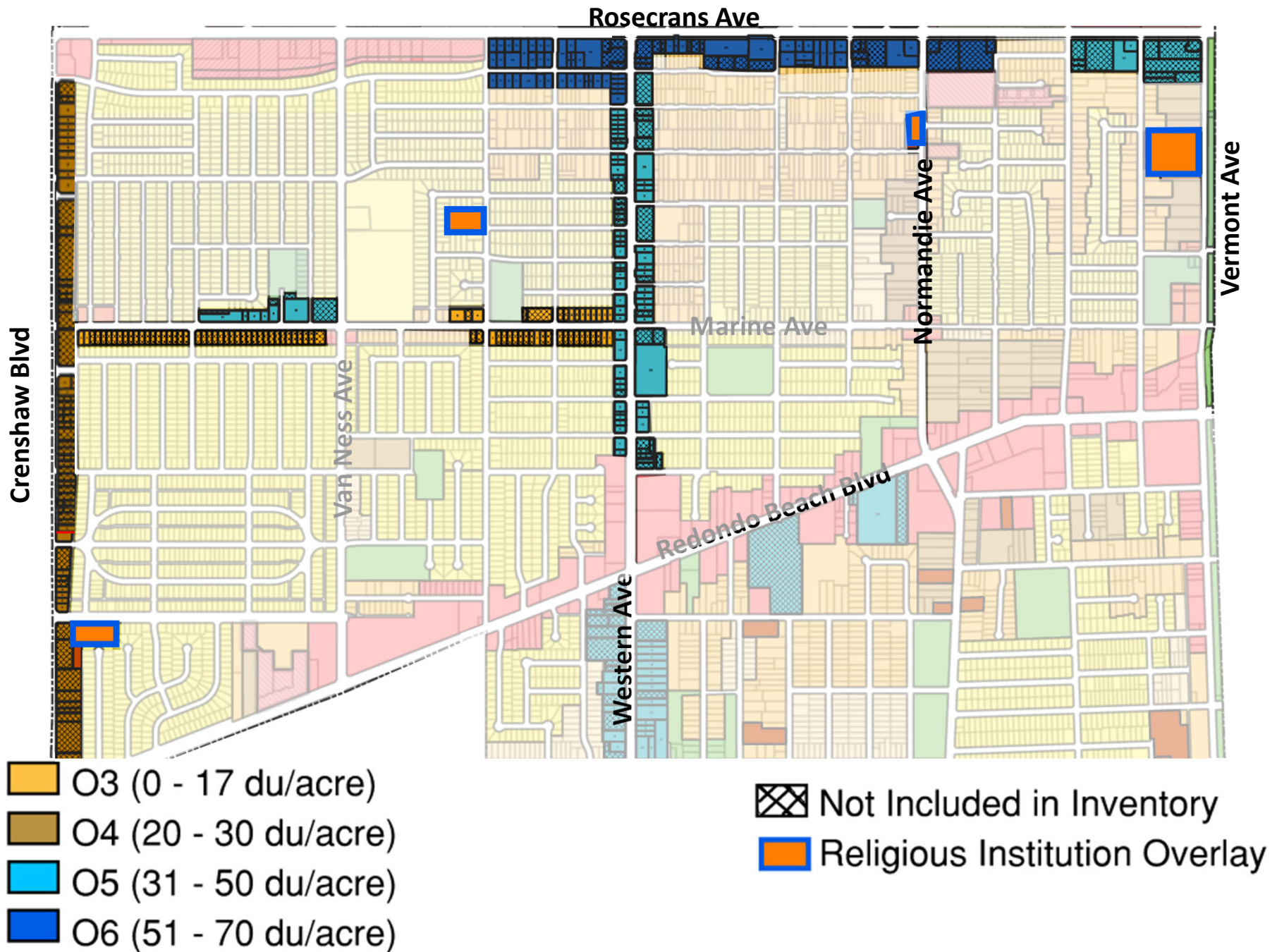
El Segundo Blvd to Rosecrans Ave



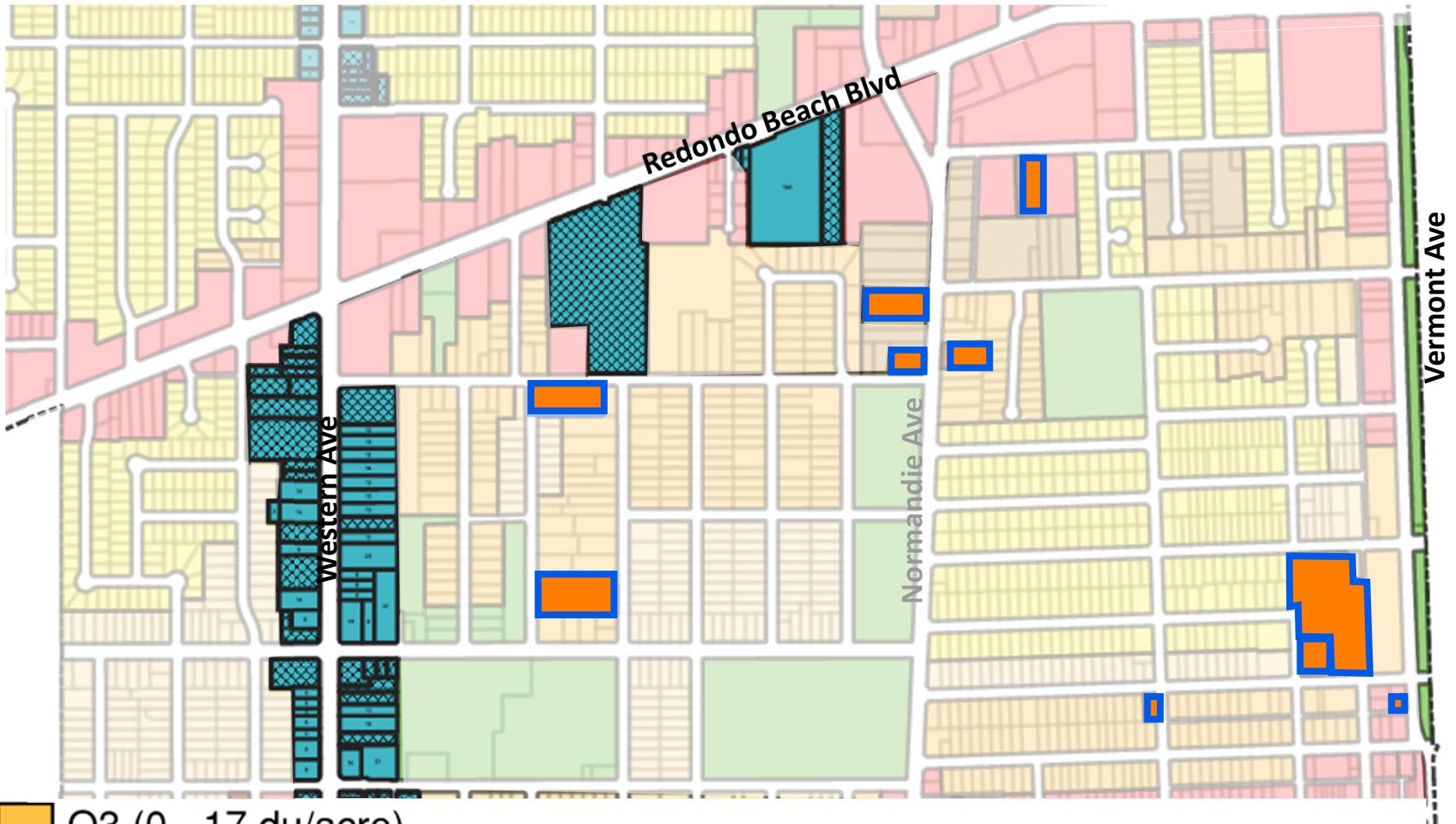
- O3 (0 - 17 du/acre)
- O4 (20 - 30 du/acre)
- O5 (31 - 50 du/acre)
- O6 (51 - 70 du/acre)

- Not Included in Inventory
- Religious Institution Overlay

Rosecrans Ave to Redondo Beach Blvd



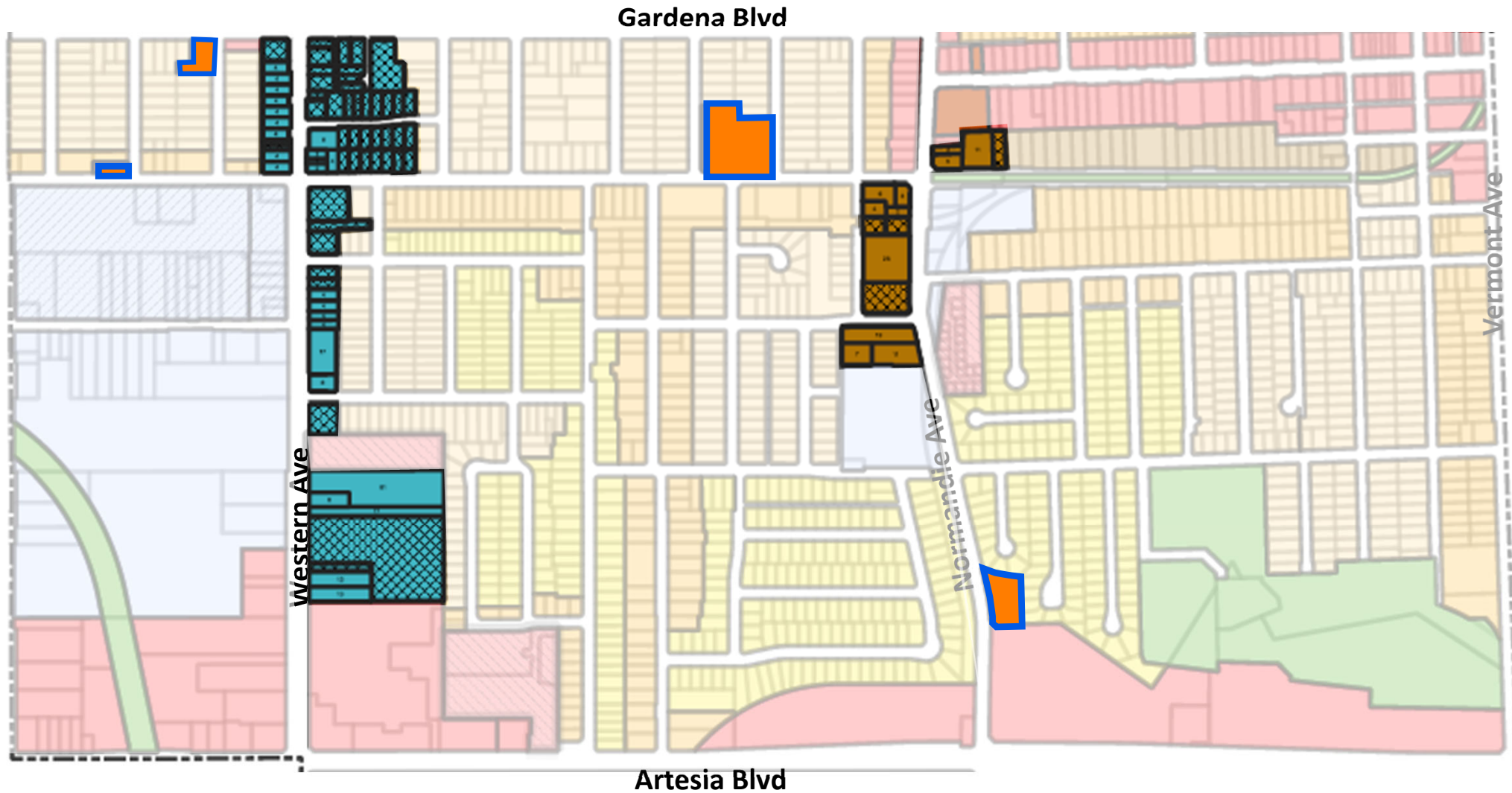
Redondo Beach Blvd to Gardena Blvd



- O3 (0 - 17 du/acre)
- O4 (20 - 30 du/acre)
- O5 (31 - 50 du/acre)
- O6 (51 - 70 du/acre)

- Not Included in Inventory
- Religious Institution Overlay

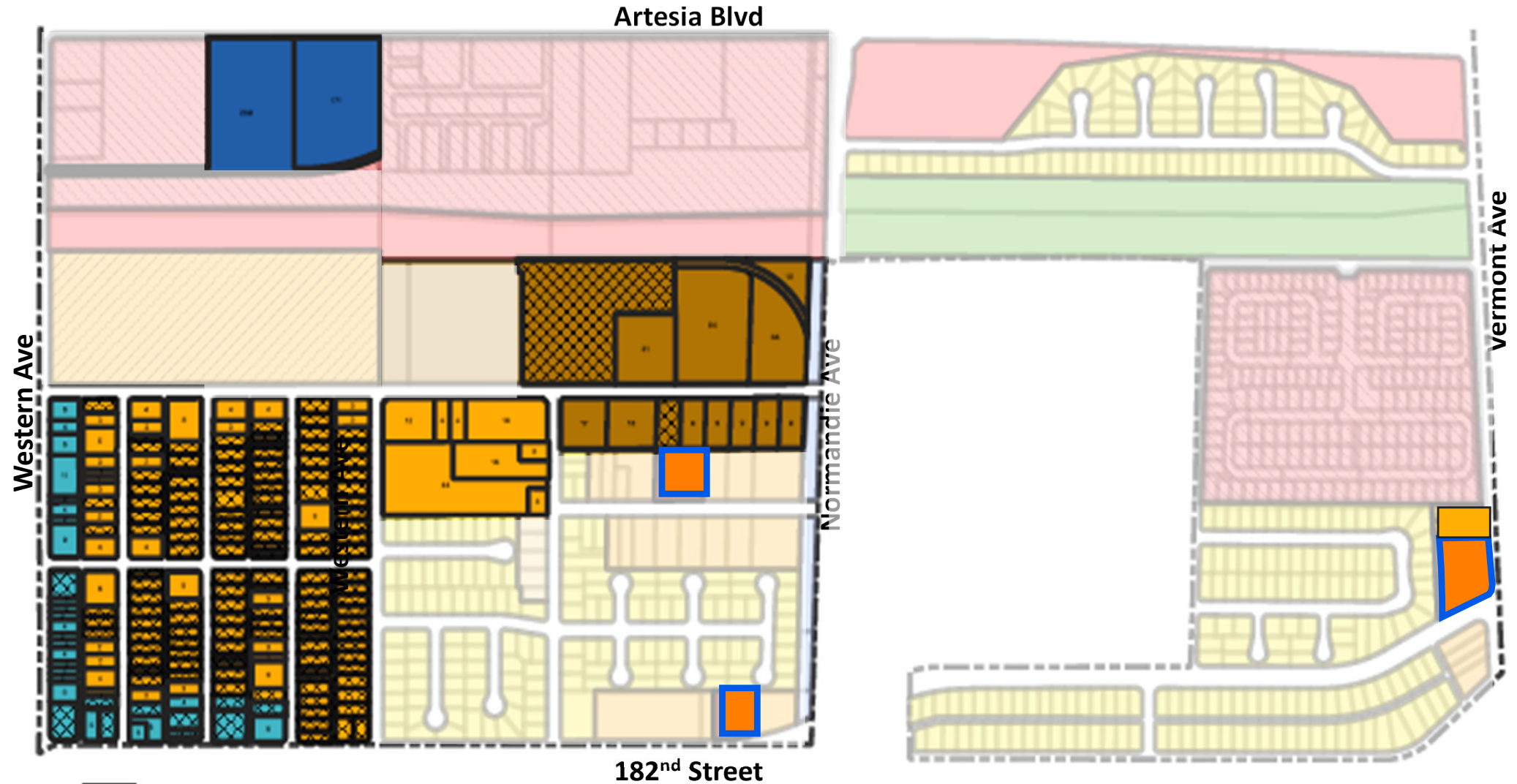
Gardena Blvd to Artesia Blvd



- O3 (0 - 17 du/acre)
- O4 (20 - 30 du/acre)
- O5 (31 - 50 du/acre)
- O6 (51 - 70 du/acre)

- Not Included in Inventory
- Religious Institution Overlay

South of Artesia



- O3 (0 - 17 du/acre)
- O4 (20 - 30 du/acre)
- O5 (31 - 50 du/acre)
- O6 (51 - 70 du/acre)

- Not Included in Inventory
- Religious Institution Overlay