

HAWTHORNE

EL SEGUNDO

LOS ANGELES COUNTY

BLVD.

BLVD.

1

2

3

4

5

6

7

8

9

43

AVE.

AVE.

AVE.

AVE.

HAWTHORNE

42

135 th

ST.

10

41

11

40

ROSECRANS

AVE.

12

39

13

38

MARINE

AVE.

14

37

15

COUNTY OF LOS ANGELES

36

MANHATTAN BEACH BLVD.

BEACH

16

35

158 th ST.

17

34

REDONDO

32

CITY MAINTENANCE YARD

161 st ST.

18

33

162 nd

CITY HALL

PL.

31

GARDENA

BLVD.

166 th

ST.

19

TORRANCE

GRAMERCY

30

NORMANDIE

170 th ST.

20

CRENSHAW

VAN NESS

WESTERN

VERMONT

29

ARTESIA

BLVD.

21

28

25 24

22

NORTH

182 nd

27

23 ST

22

TORRANCE

26

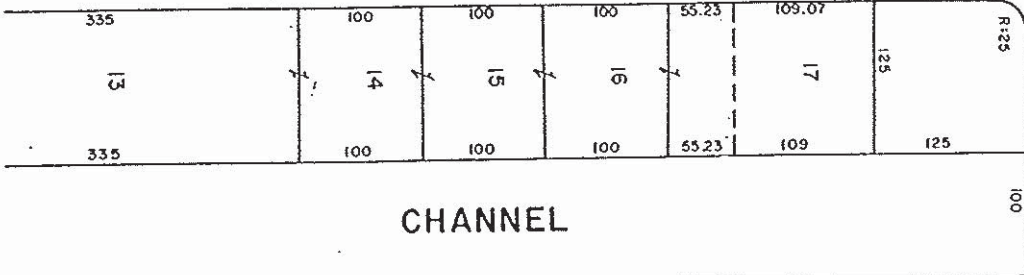
CITY OF LOS ANGELES

405

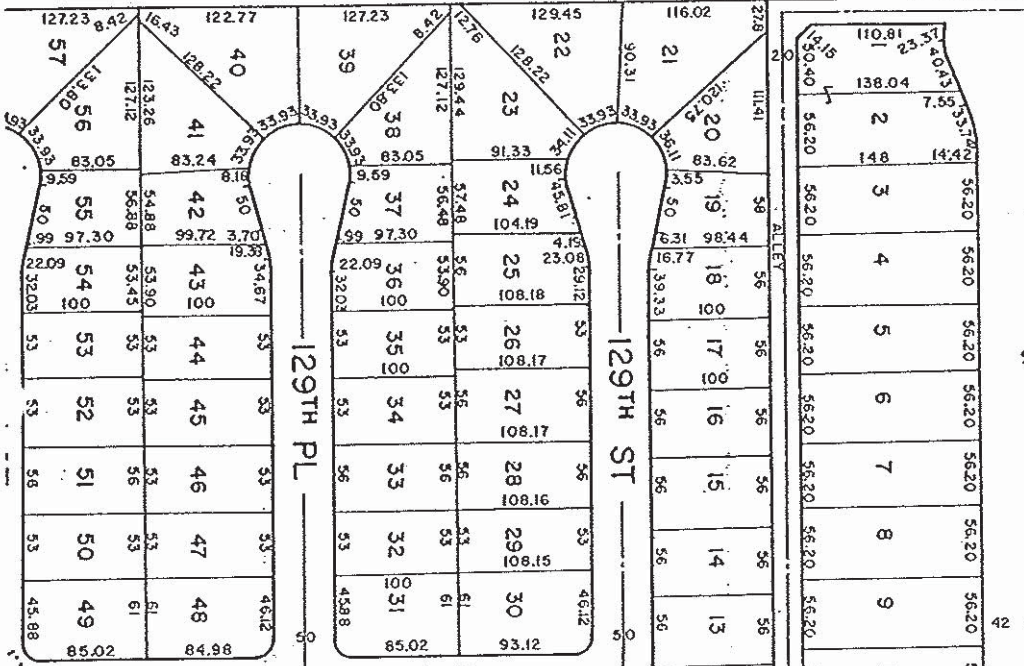
110

VICINITY MAP

CRENSHAW BLVD.



CHANNEL

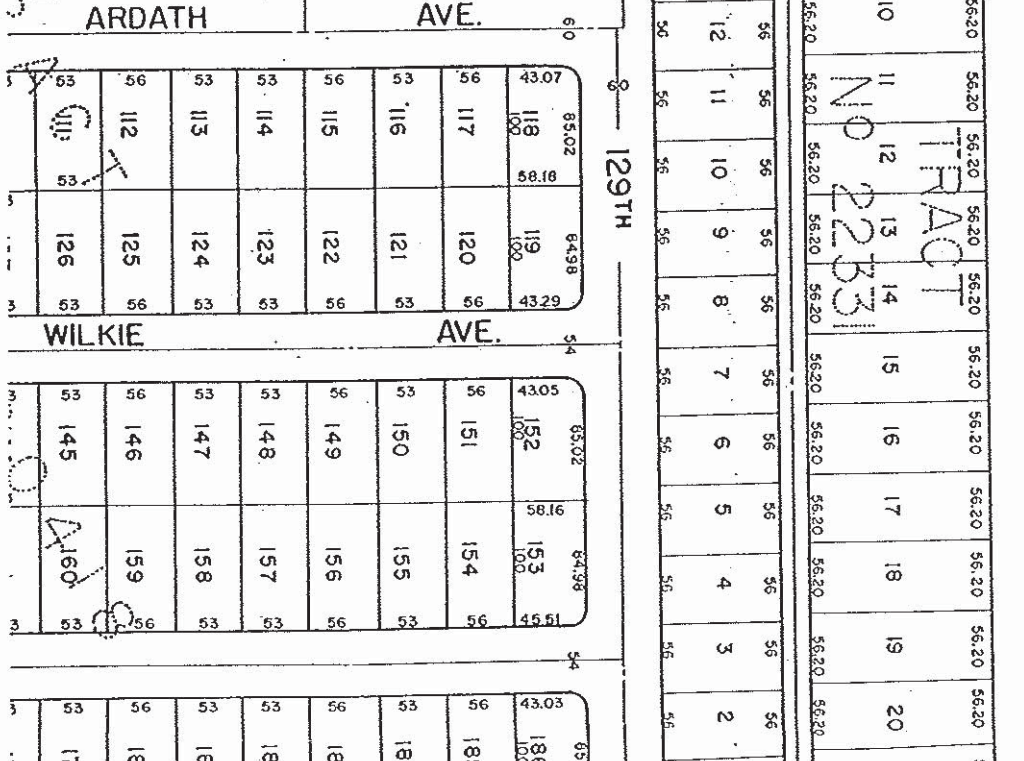


CITY OF HAWTHORNE
EL SEGUNDO
CITY OF GARDENA

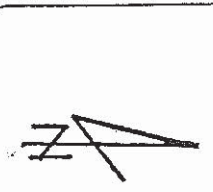
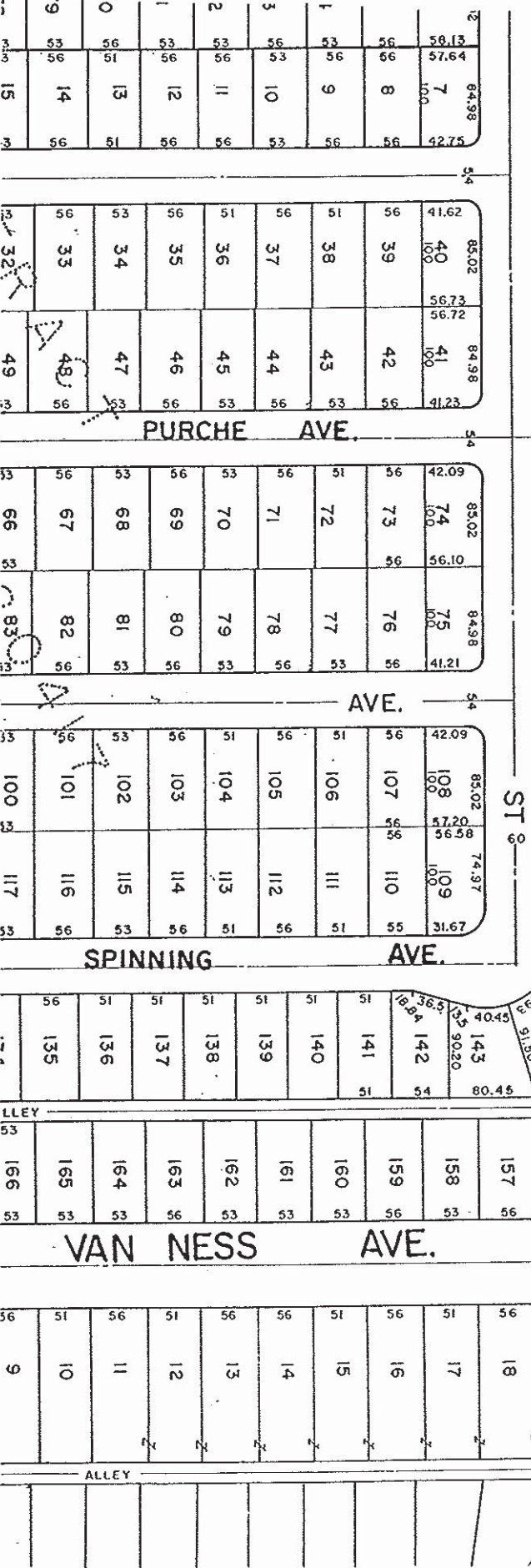
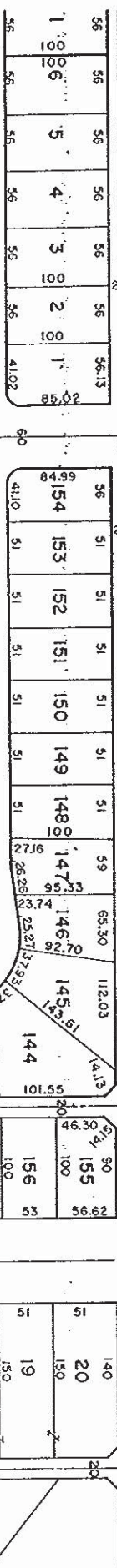
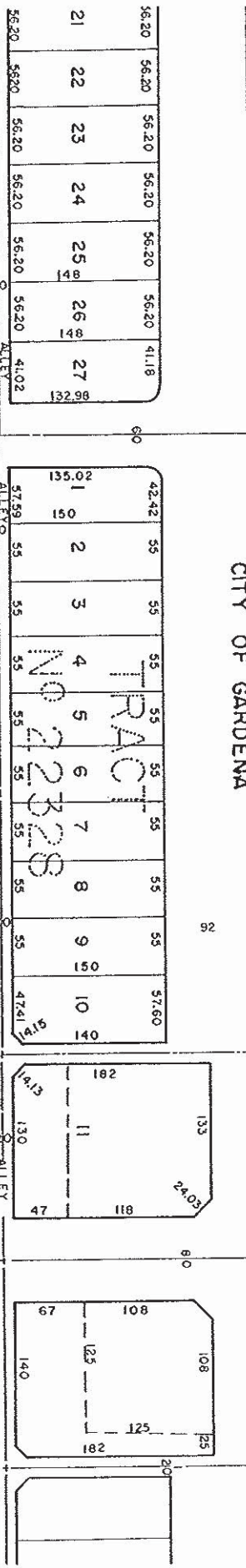
EL SEGUNDO BL.

TRACT NO 2253

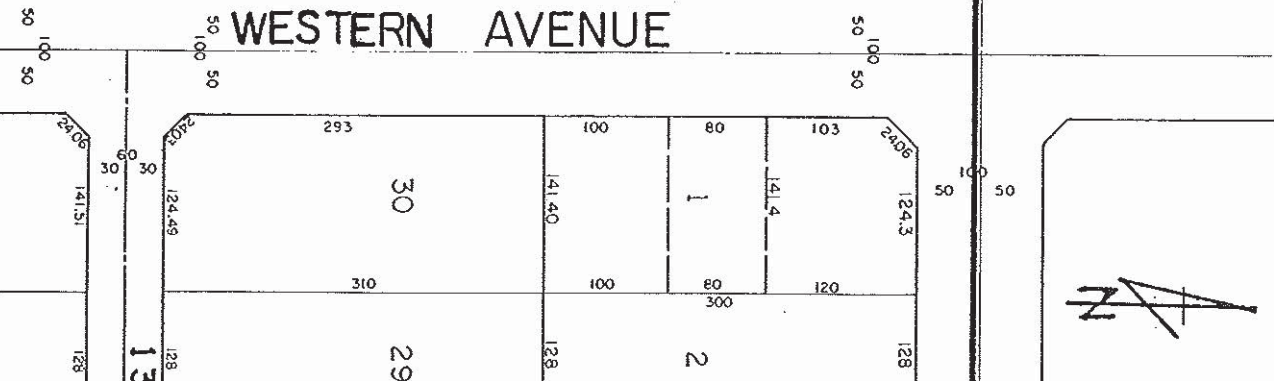
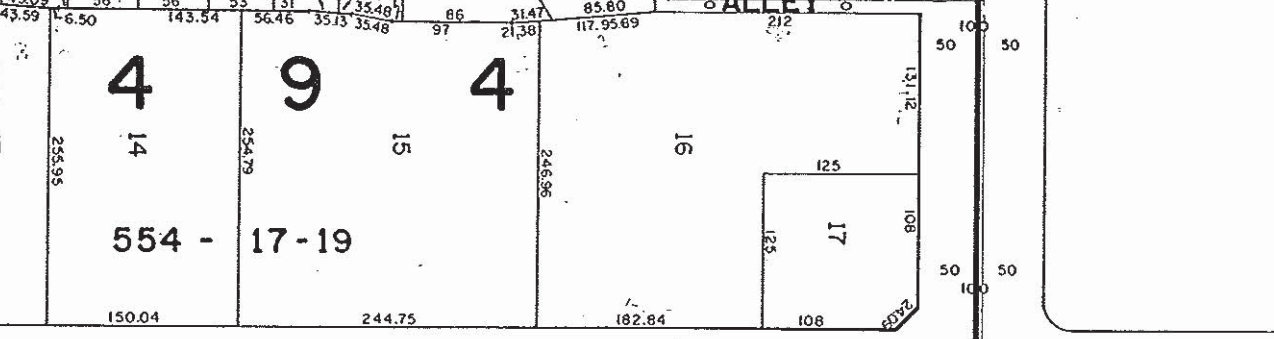
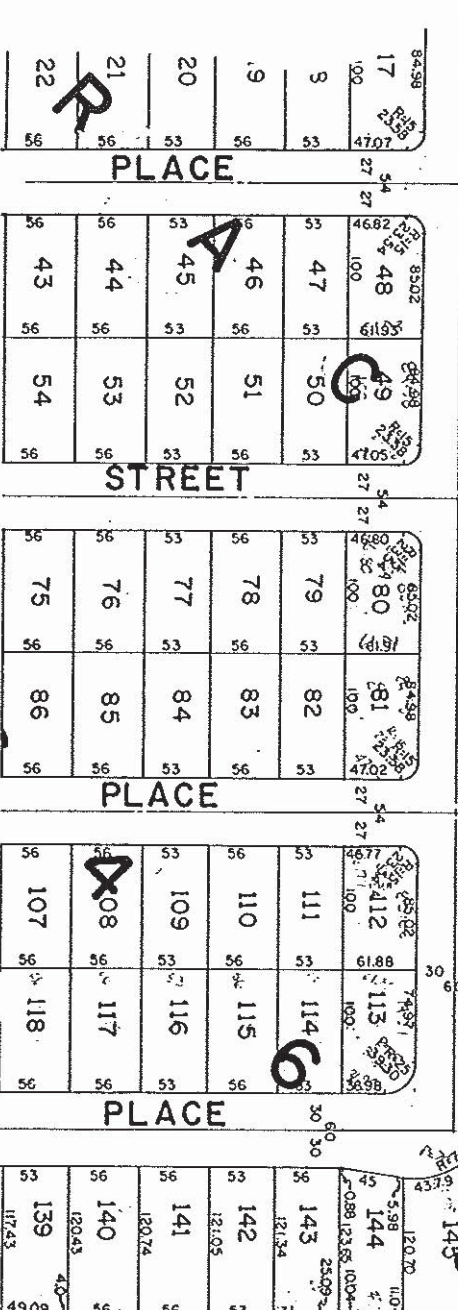
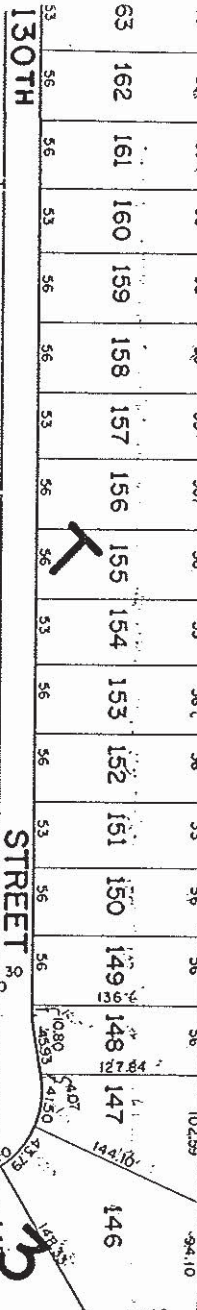
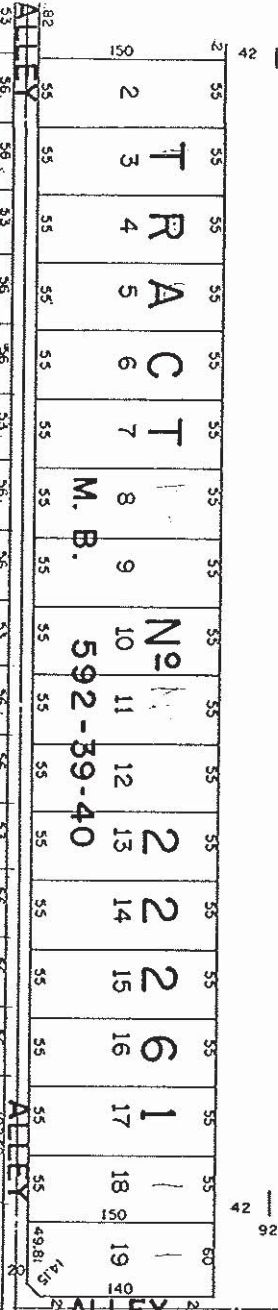
WILKIE AVE.



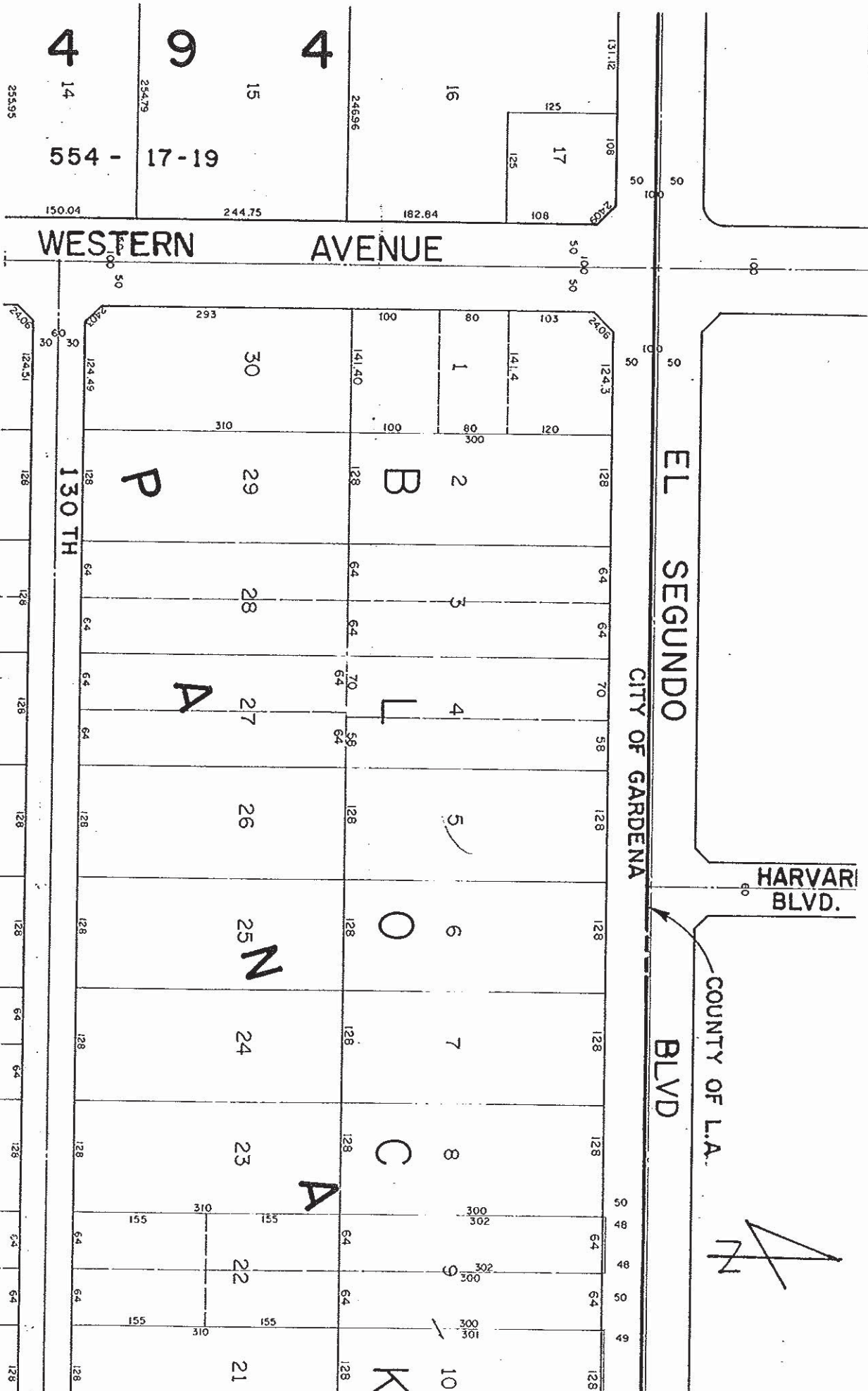
EL SEGUNDO CITY OF GARDENA BLVD. HAWTHORNE



EL SEGUNDO
CITY OF GARDENA
BLVD.
COUNTY OF L.A.



5



DENKER AVE.

LOS ANGELES COUNTY
CITY OF GARDENA
EL SEGUNDO
BLVD.

HALLDALE AVE.

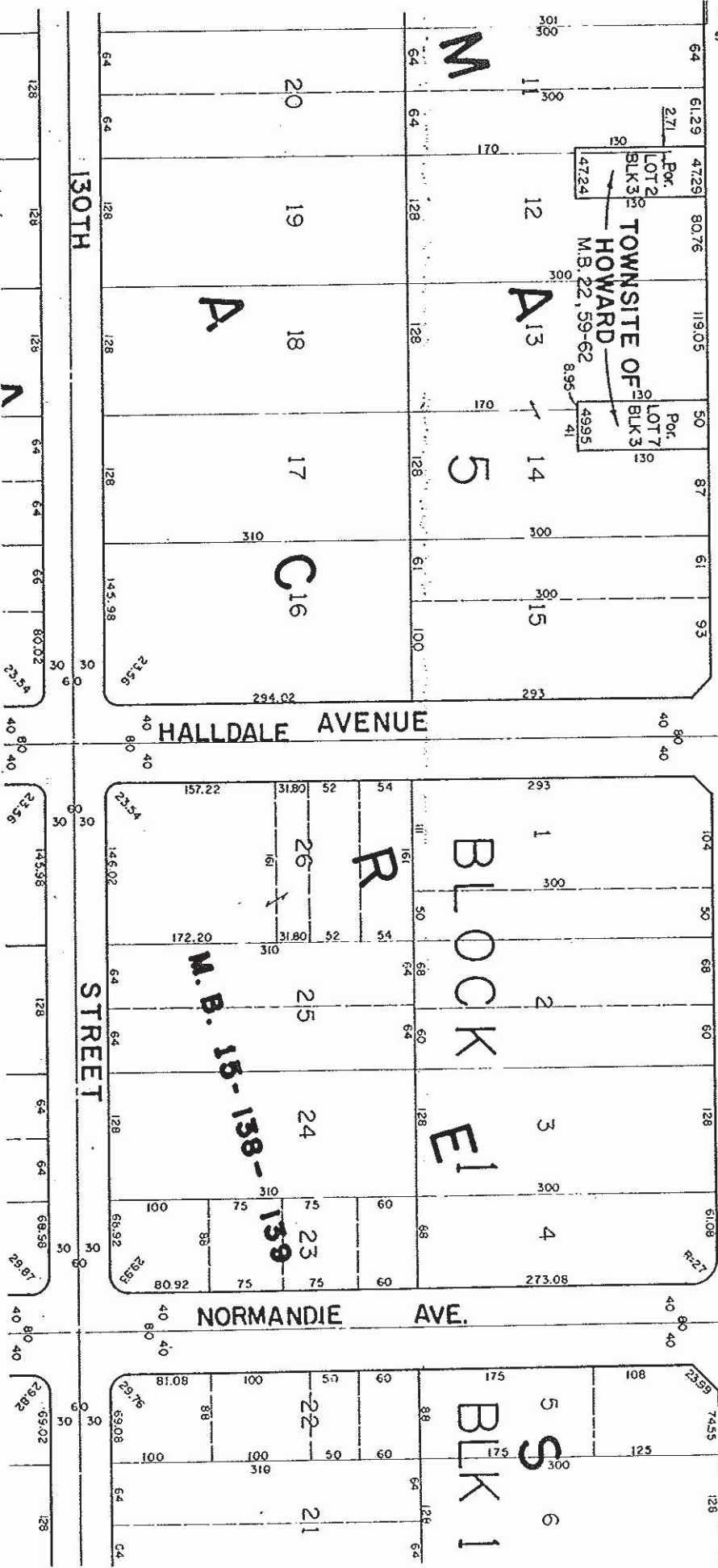
BLVD.

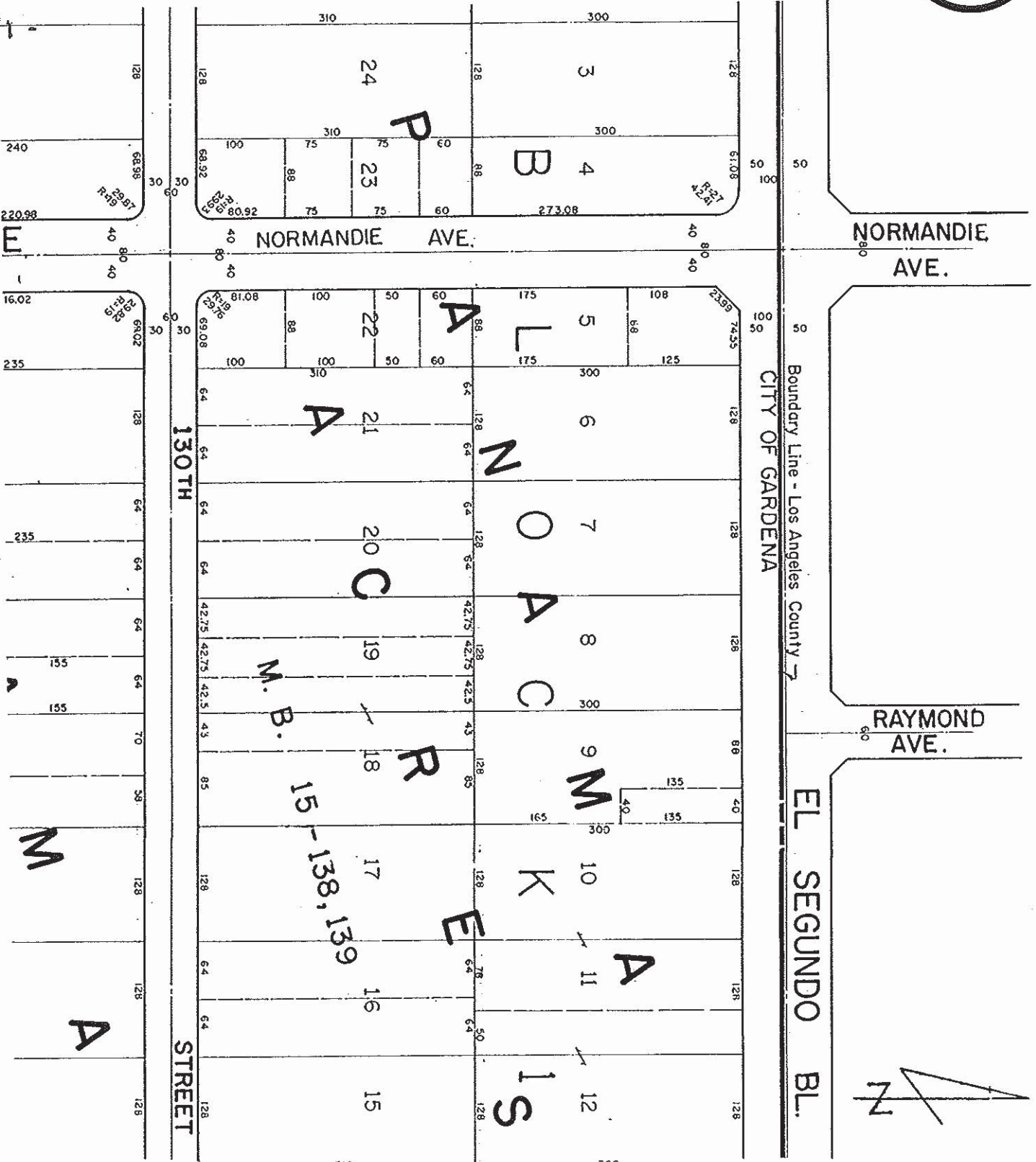
NORMANDIE AVE.

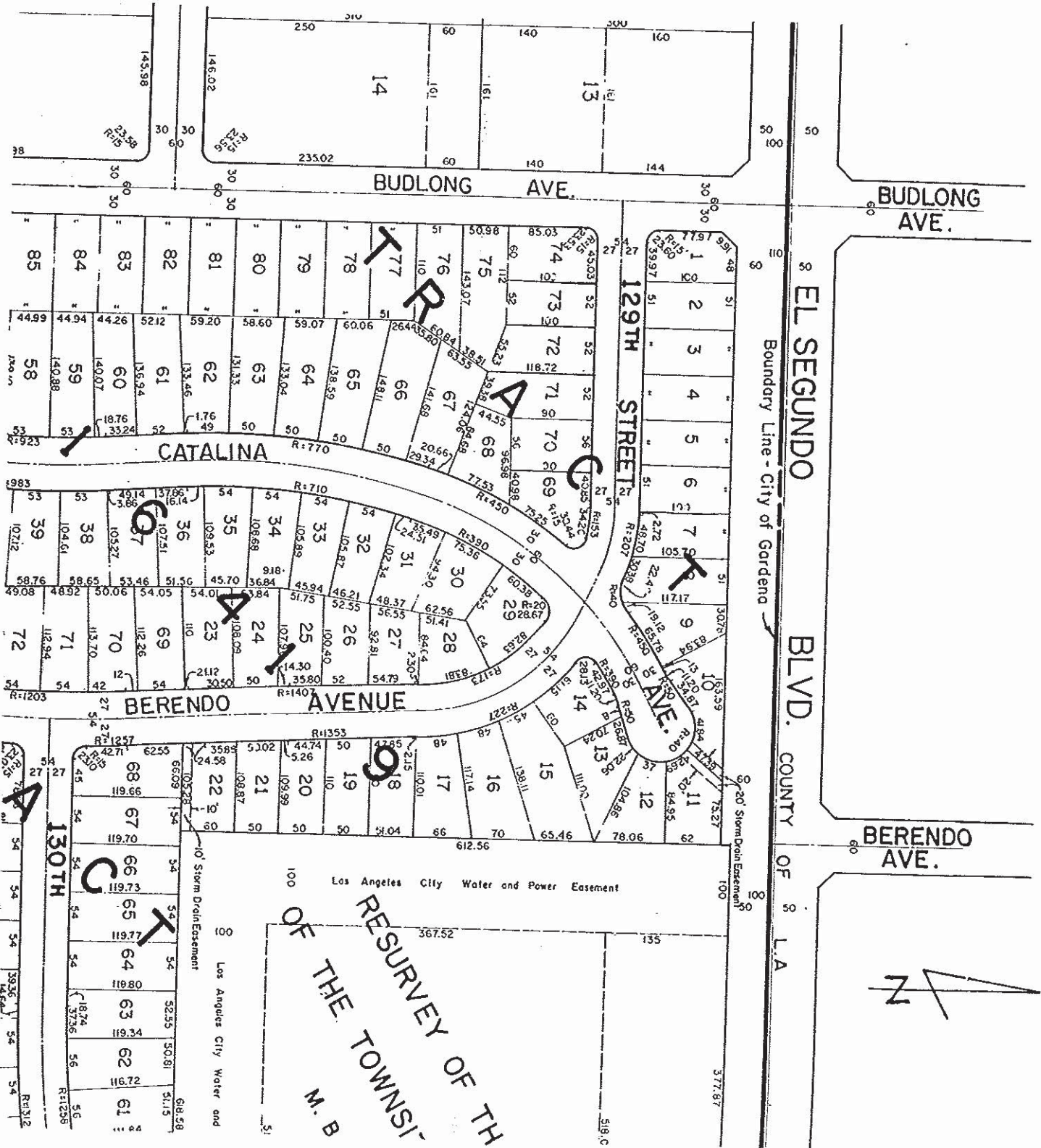


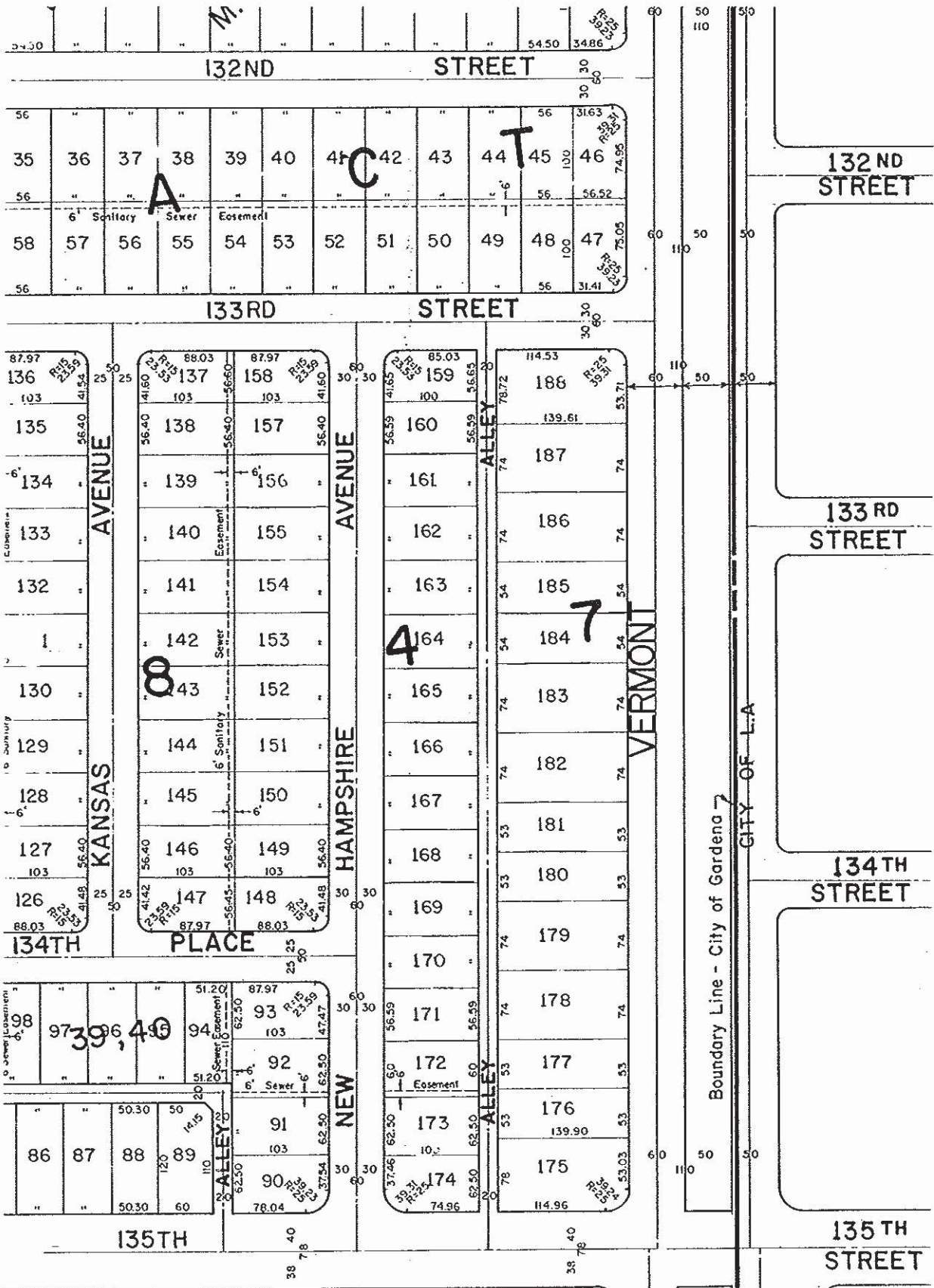
130TH

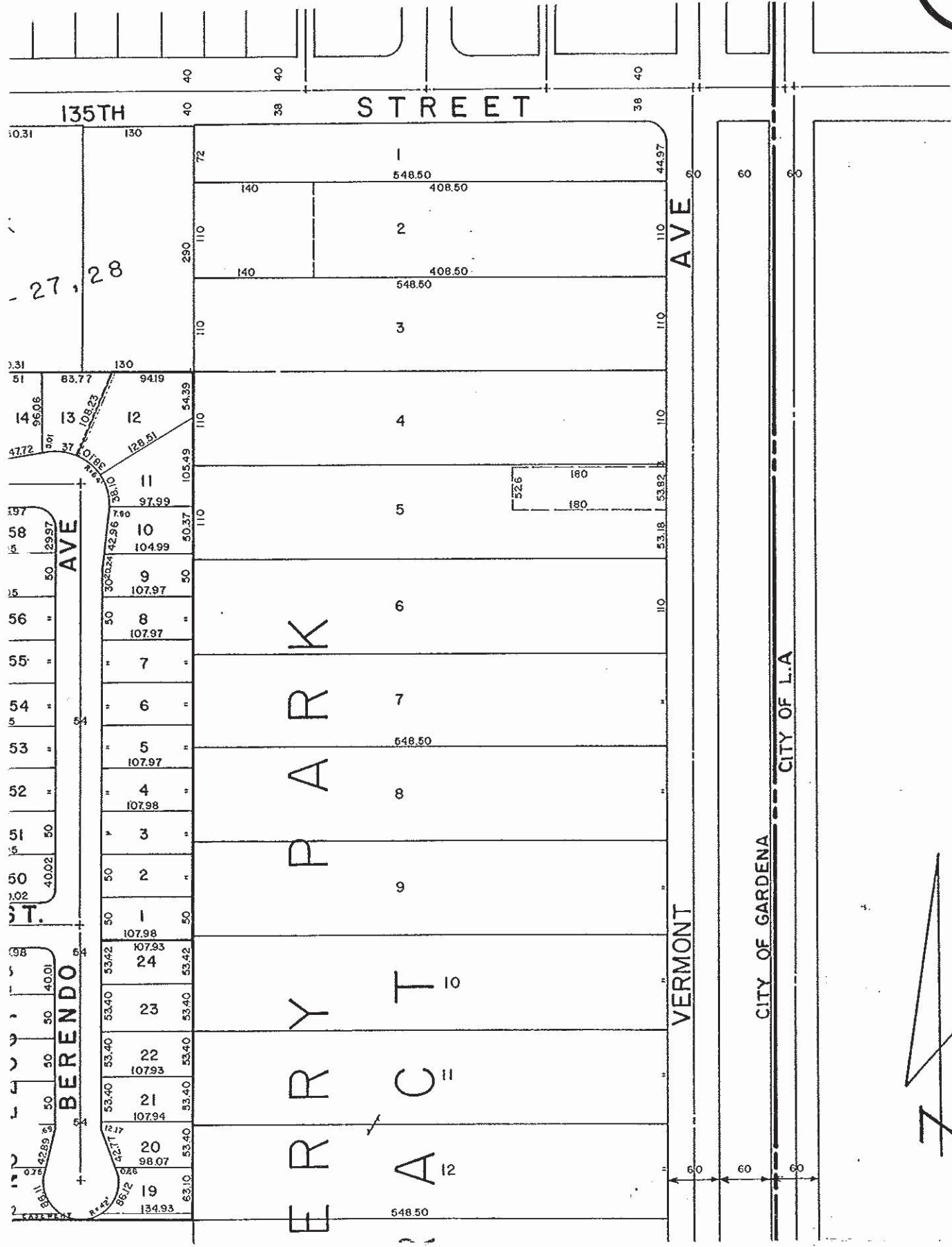
STREET

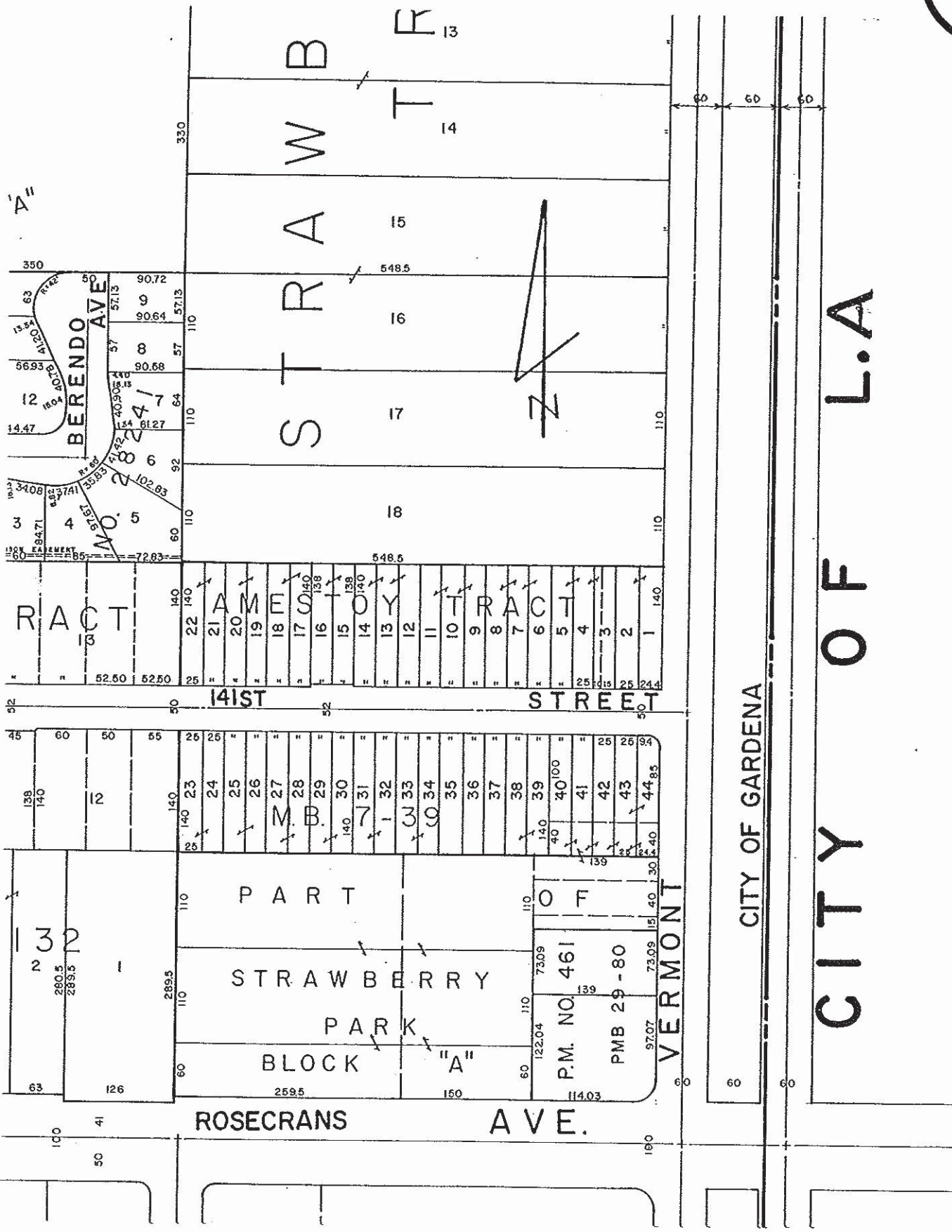












CITY OF L.A

CITY OF GARDENA

ROSECRANS AVE.

VERMONT

PART OF STRAWBERRY PARK BLOCK "A"

P.M. NO. 461

PMB 29-80

'A'

N

TRACT

14TH STREET

BERENDO AVE

NO. 5

TRACT

14TH STREET

PART OF STRAWBERRY PARK BLOCK "A"

P.M. NO. 461

PMB 29-80

ROSECRANS AVE.

VERMONT

'A'

N

TRACT

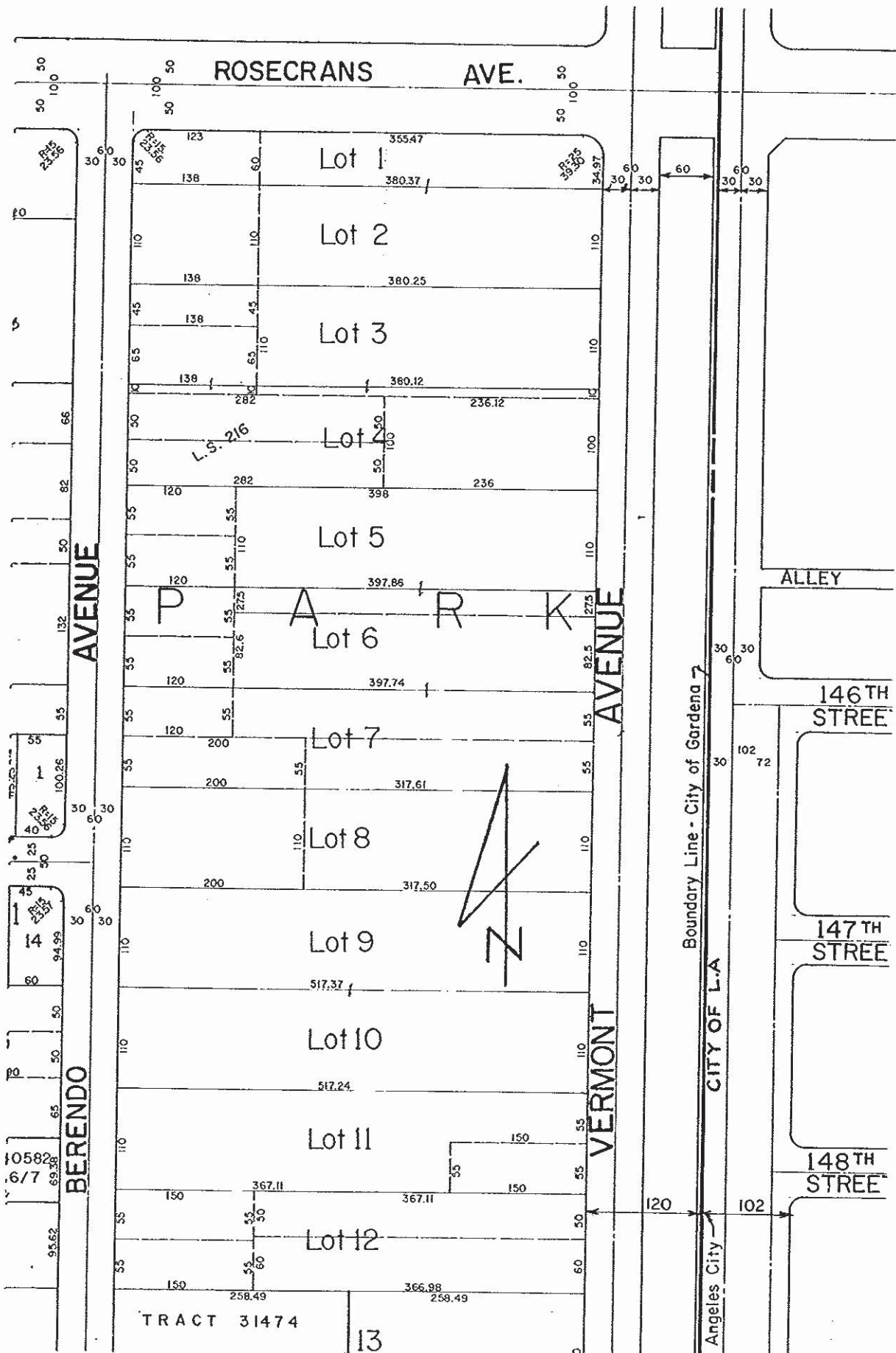
14TH STREET

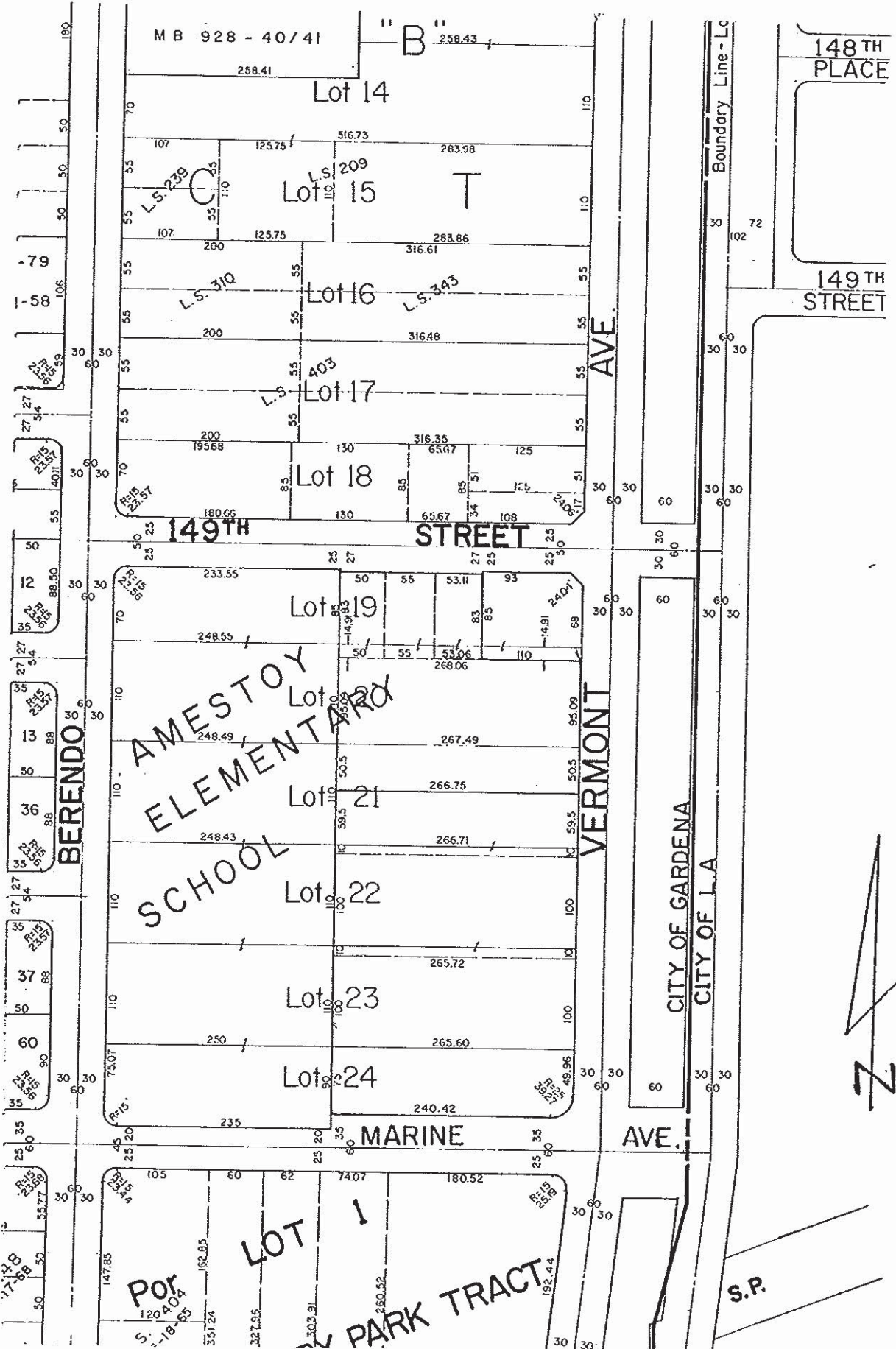
BERENDO AVE

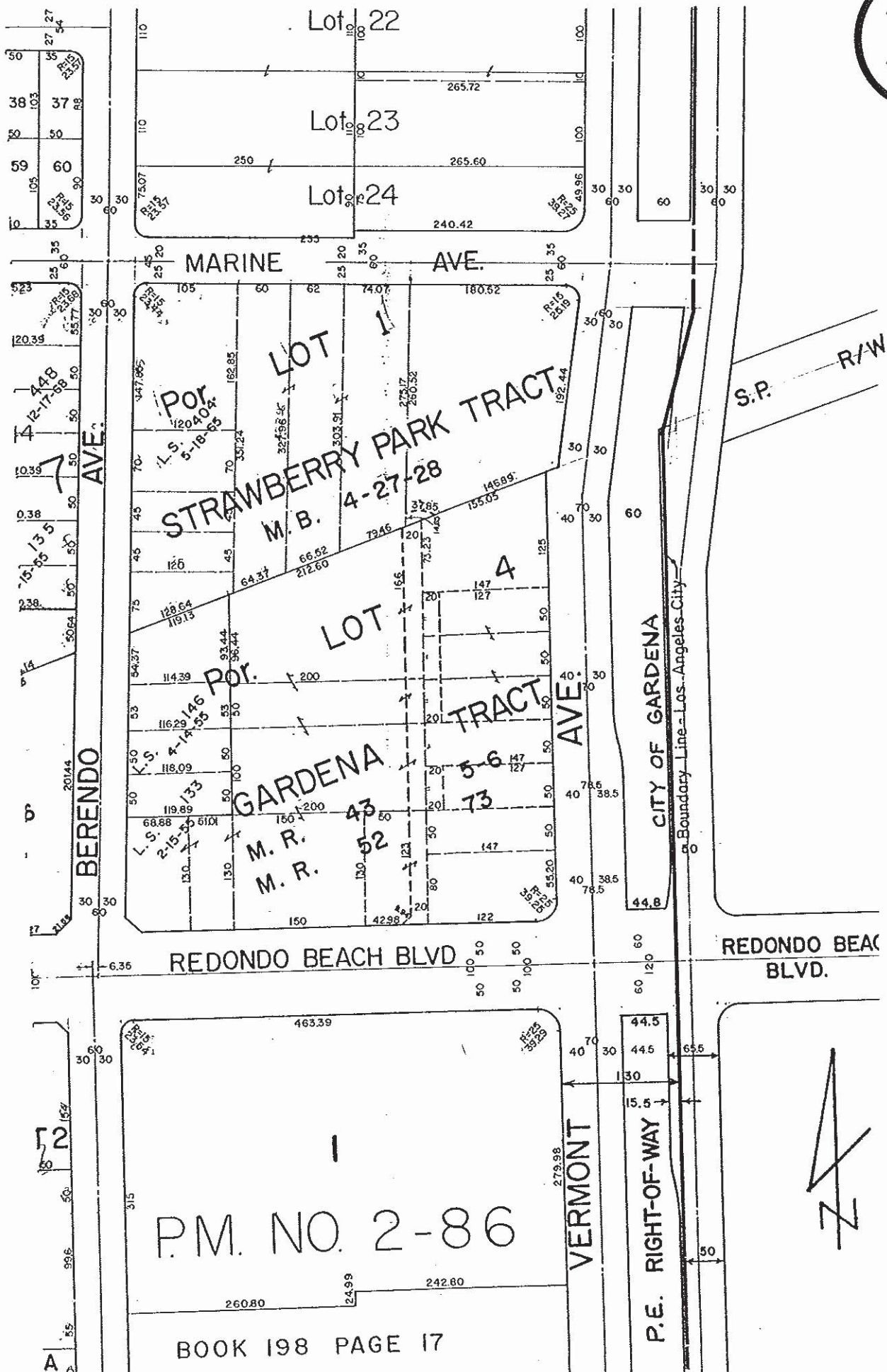
NO. 5

TRACT

14TH STREET



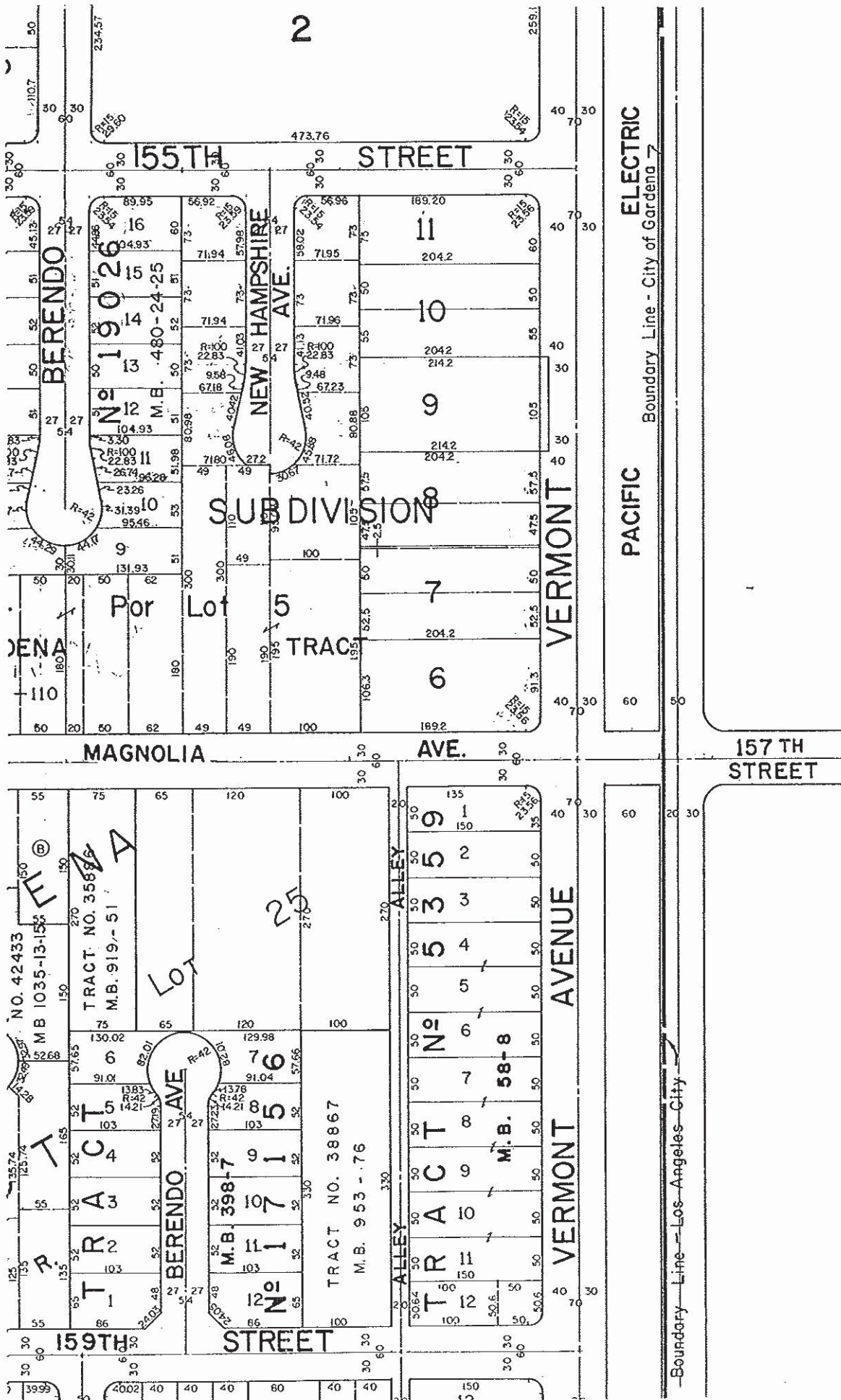




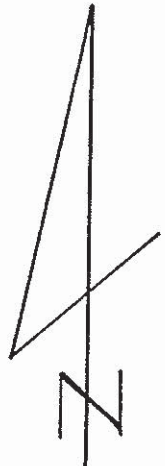
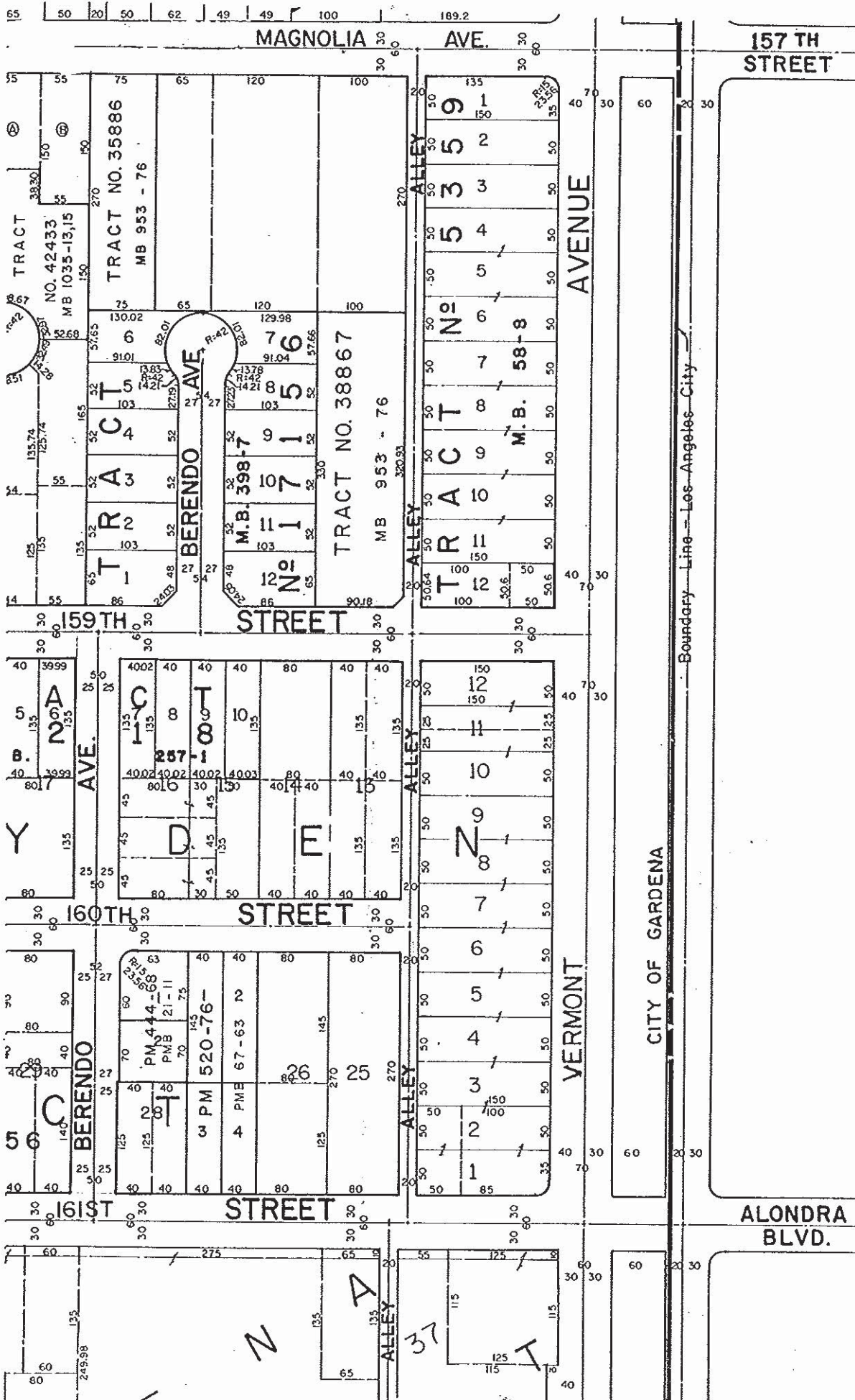
P.M. NO. 2-86

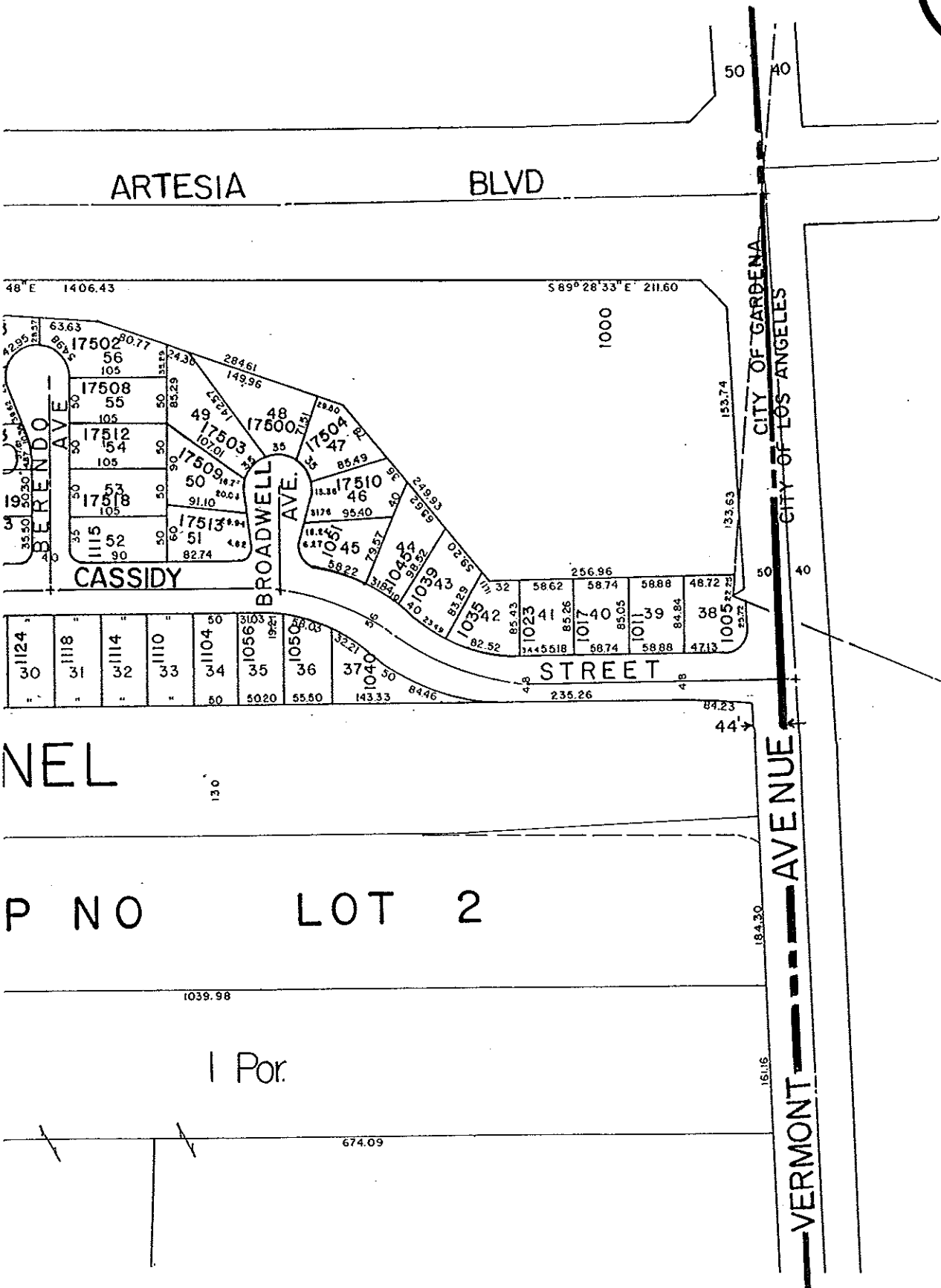
BOOK 198 PAGE 17





Z





NEL

P NO LOT 2

1 Por.

674.09

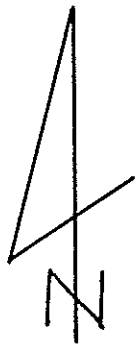
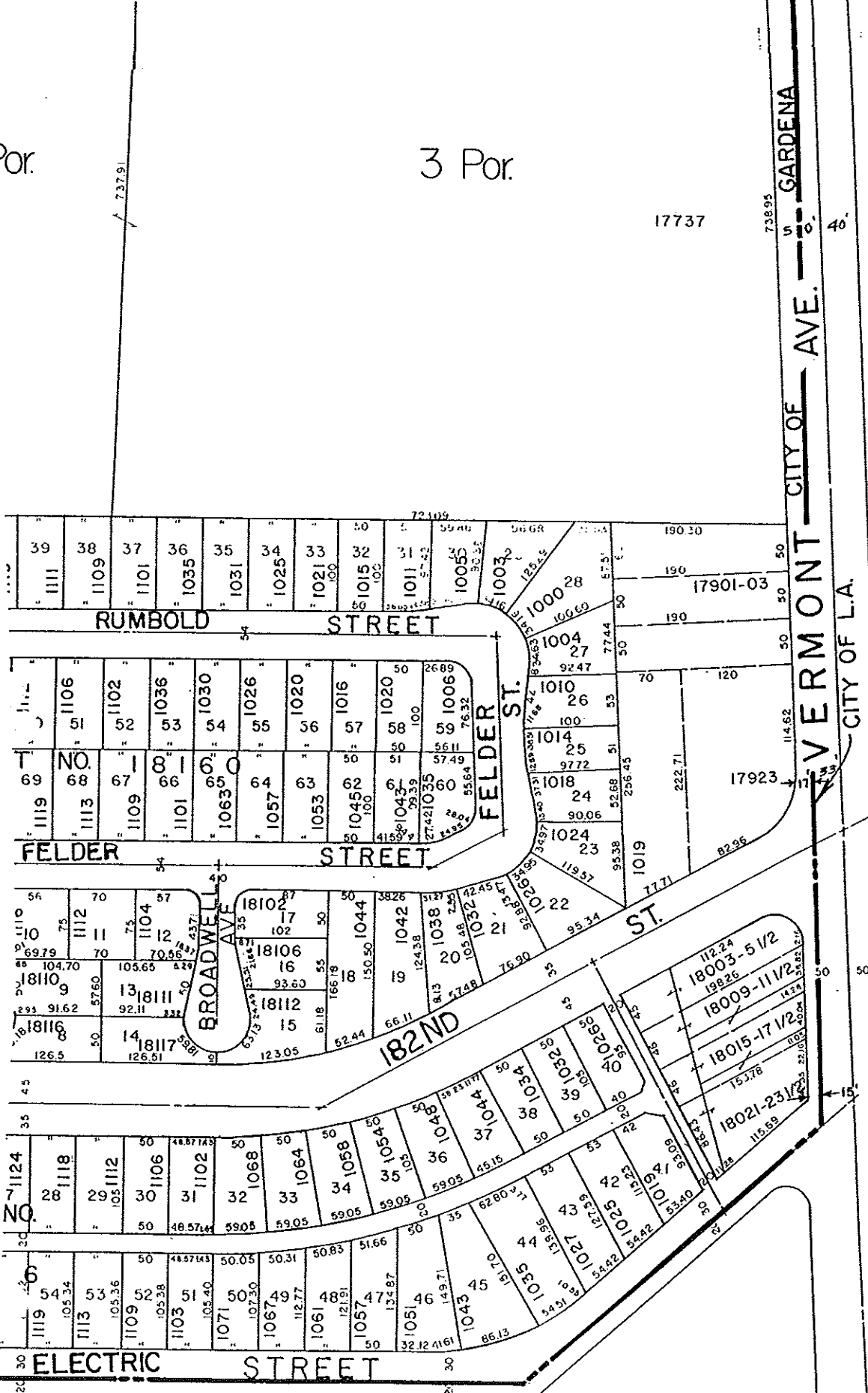
VERMONT AVENUE

Por.

3 Por.

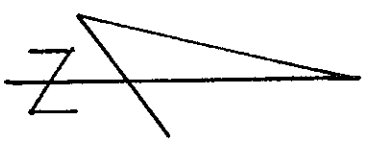
17737

CITY OF VERMONT CITY OF L.A. GARDENA



NORMANDIE AVE.

HIGH T D NO. 44, 45, 46, 47, 48, 49
GARDENA SCHOOL



166.80

40'

177TH

CITY OF GARDENA
CITY OF L.A.

BOUNDARY LINE

STREET

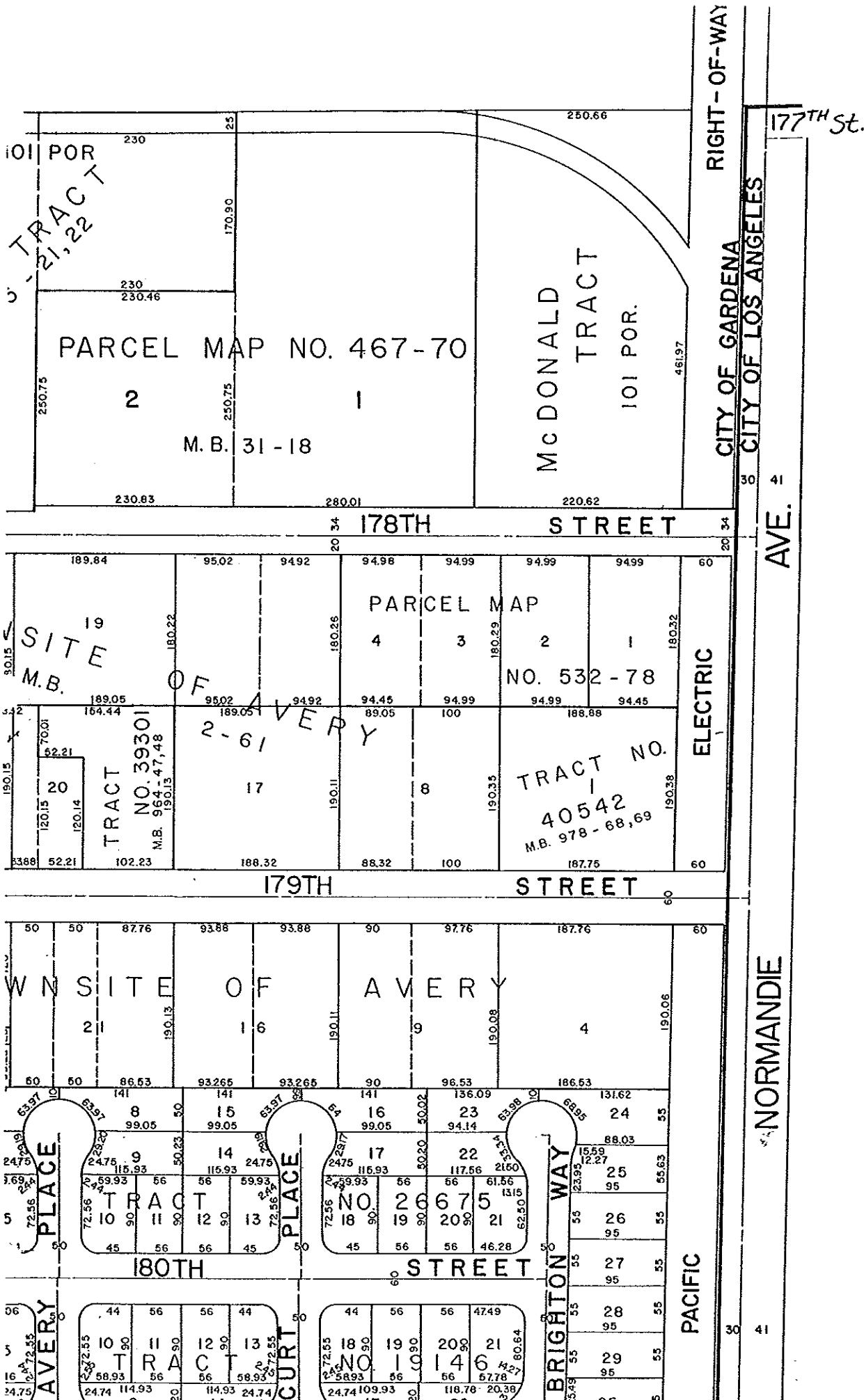
S.O. CAL. EDISON CO. LT

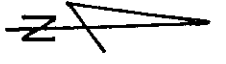
45'

BUDLONG AVE

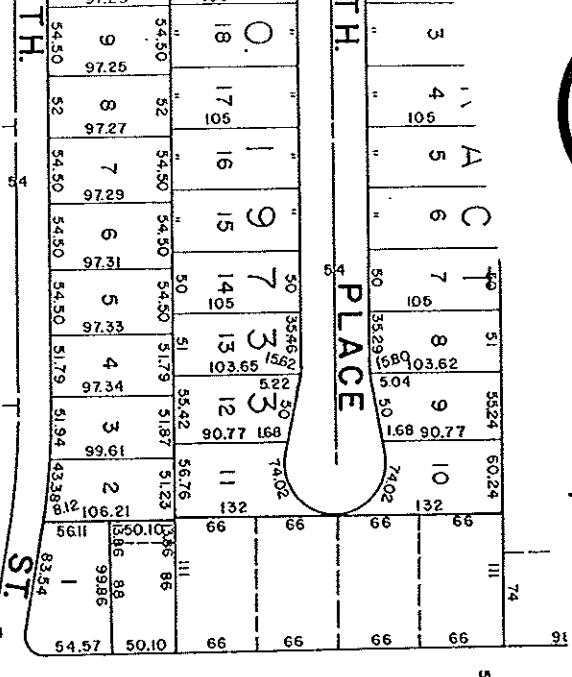
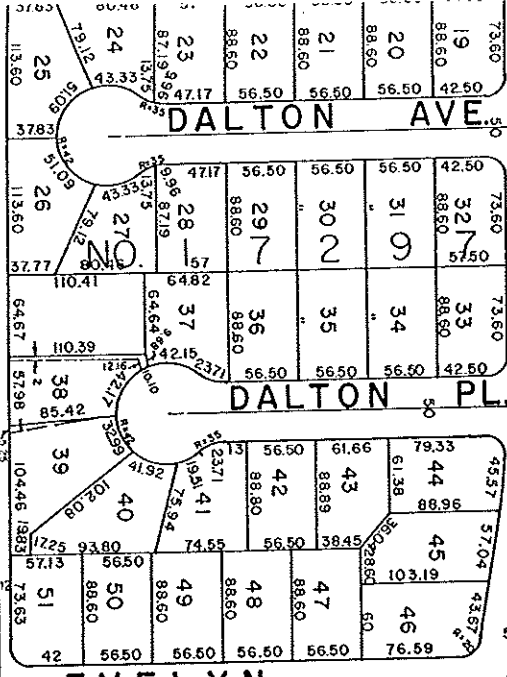
CITY OF GARDENA

303.0

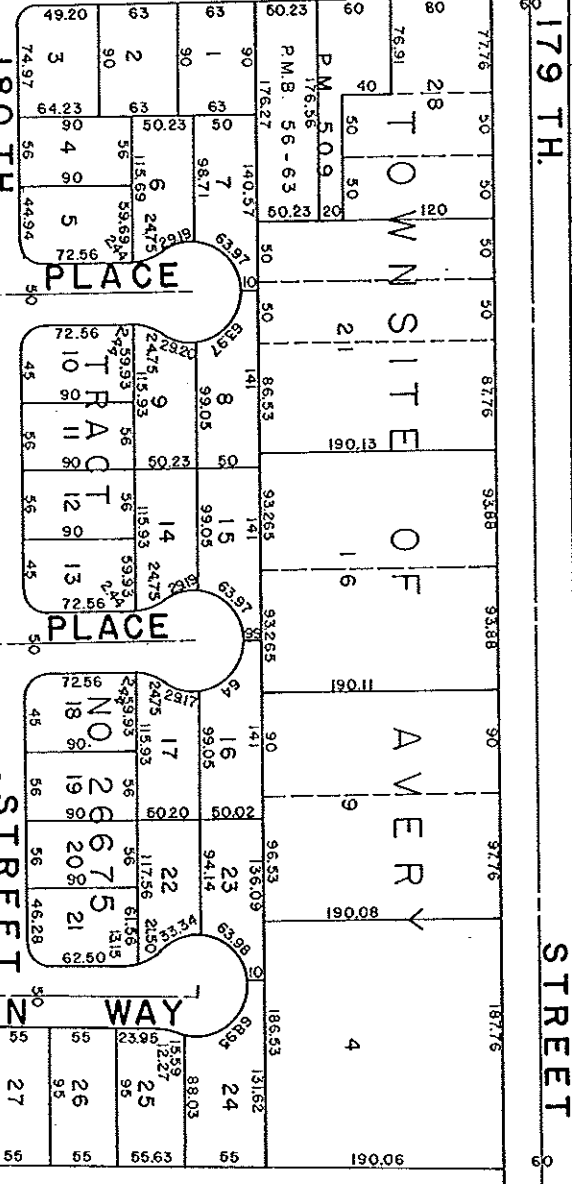
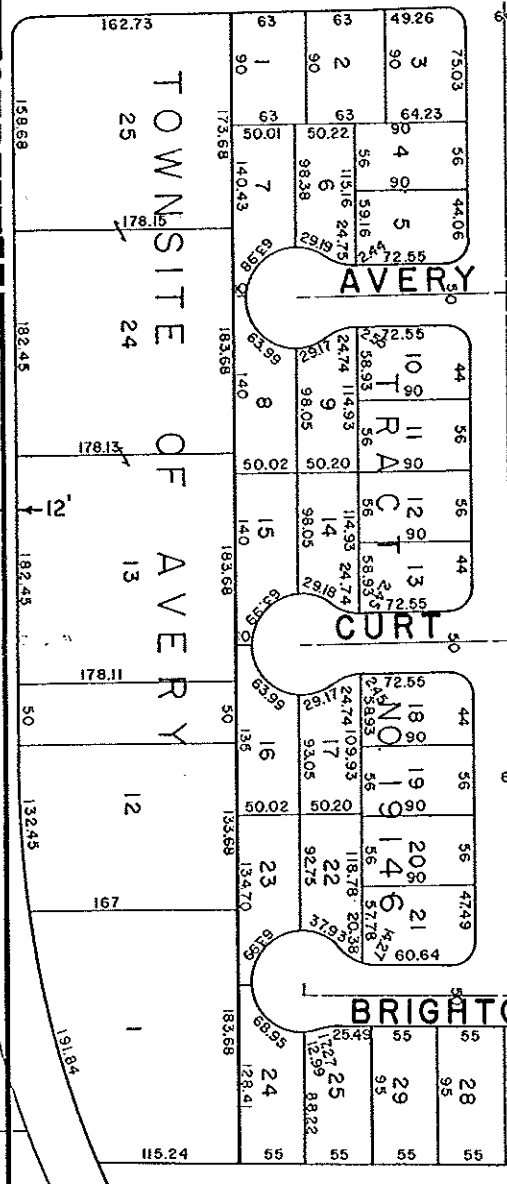




CITY OF LOS ANGELES 182ND STREET



182ND STREET



PACIFIC CITY OF GARDENA

WESTERN

AVE.

CITY OF TORRANCE

CITY OF GARDENA

8	120	31	128	31	128
9	130	32	130	32	130
10	130	33	130	33	130
11	130	34	130	34	130
12	130	35	130	35	130
13	130	36	130	36	130
14	1075	37	130	37	130
15	1075	38	130	38	130
16	130	39	130	39	130
17	130	40	130	40	130
18	130	41	130	41	130
19	110	42	130	42	130
20	130	43	130	43	130
21	130	44	130	44	130
22	110	45	130	45	130
23	95	46	130	46	130

180

TH.

54	130	80	130	80	130
55	1275	81	130	81	130
56	1275	82	130	82	130
57	130	83	130	83	130
58	130	84	130	84	130
59	130	85	130	85	130
60	130	86	130	86	130
61	130	87	130	87	130
62	130	88	130	88	130
63	130	89	130	89	130
64	130	90	130	90	130
65	130	91	130	91	130
66	130	92	130	92	130
67	1275	93	130	93	130
68	1275	94	130	94	130
69	1125	95	130	95	130

HOBART

HARVARD

251	130	276	130	276	130
252	130	277	130	277	130
253	130	278	130	278	130
254	130	279	130	279	130
255	130	280	130	280	130
256	130	281	130	281	130
257	130	282	130	282	130
258	130	283	130	283	130
259	130	284	130	284	130
260	130	285	130	285	130
261	130	286	130	286	130
262	130	287	130	287	130
263	1235	288	130	288	130
264	1235	289	130	289	130
265	1235	290	130	290	130
266	1235	291	130	291	130
267	1235	292	130	292	130
268	1275	293	130	293	130
269	1275	294	130	294	130
270	130	295	130	295	130
271	130	296	130	296	130
272	130	297	130	297	130
273	130	298	130	298	130
274	130	299	130	299	130
275	130	300	130	300	130

180

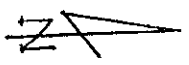
STREET

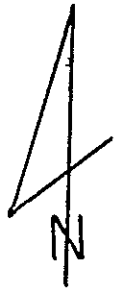
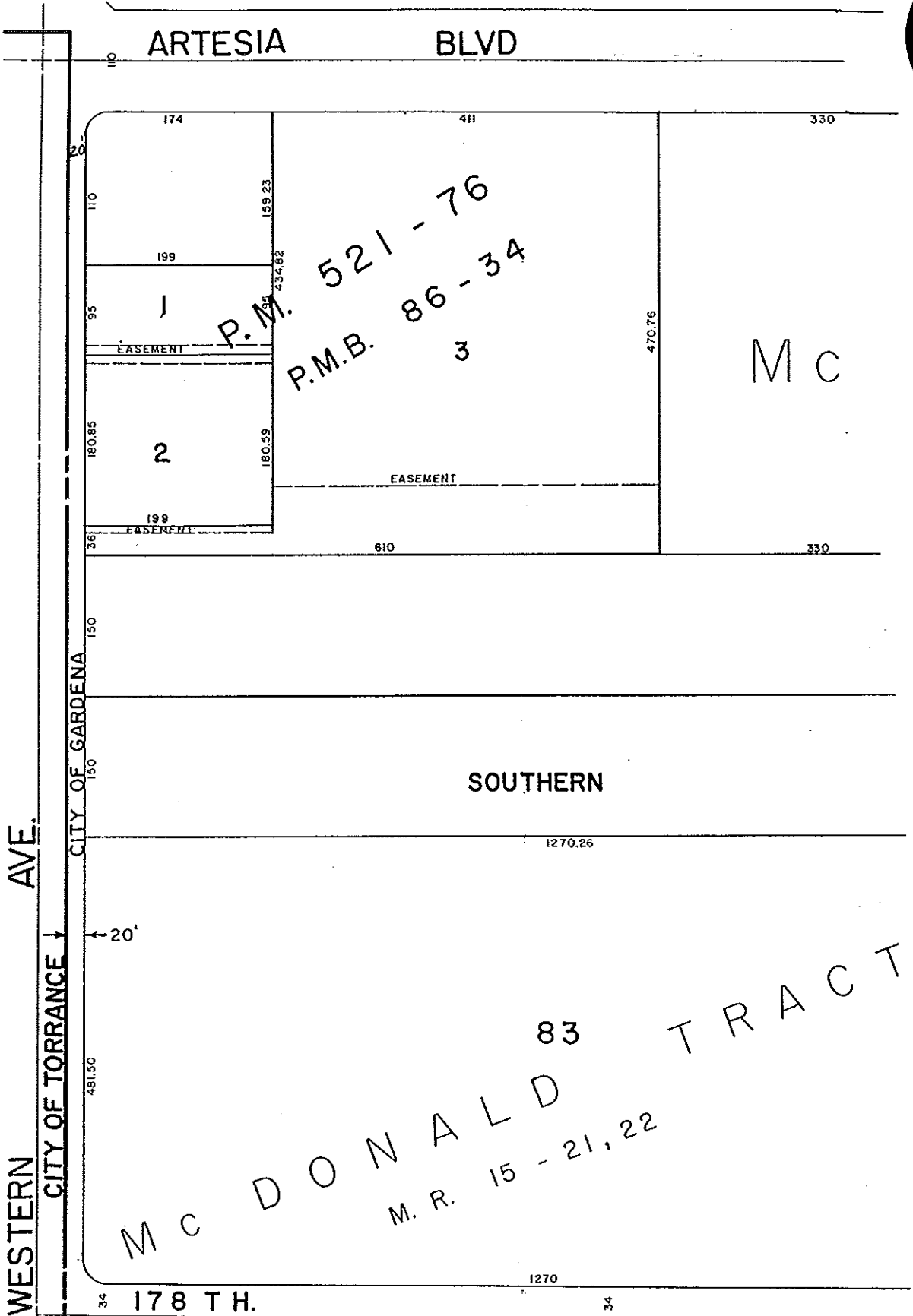
103	130	136	130	136	130
104	1275	137	130	137	130
105	1275	138	130	138	130
106	130	139	130	139	130
107	130	140	130	140	130
108	130	141	130	141	130
109	130	142	130	142	130
110	130	143	130	143	130
111	130	144	130	144	130
112	130	145	130	145	130
113	130	146	130	146	130
114	1275	147	130	147	130
115	1025	148	130	148	130

LA SALLE

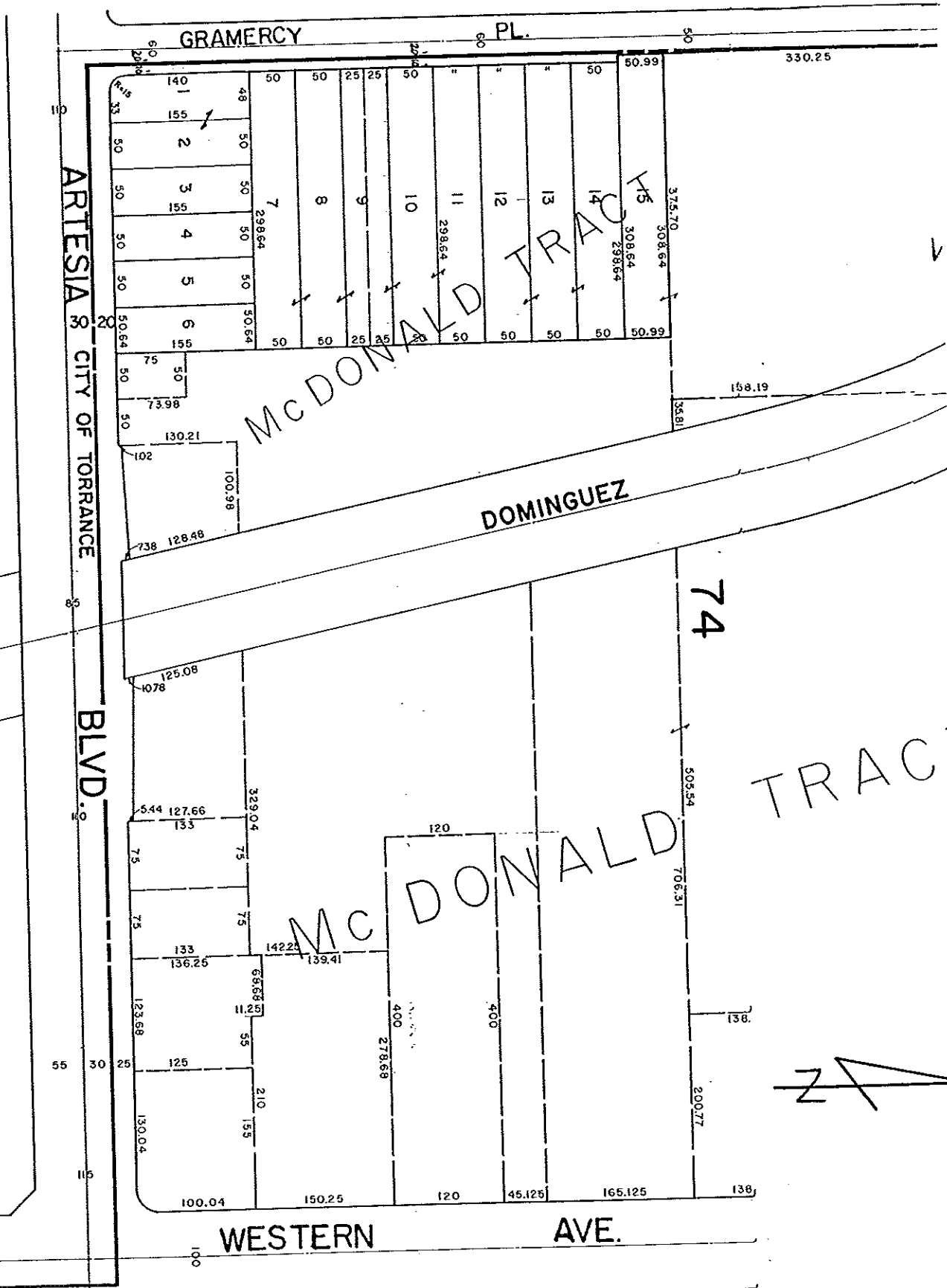
DENKER

351	113	376	130	376	130
352	128	377	130	377	130
353	130	378	130	378	130
354	130	379	130	379	130
355	130	380	130	380	130
356	130	381	130	381	130
357	130	382	130	382	130
358	130	383	130	383	130
359	130	384	130	384	130
360	130	385	130	385	130
361	130	386	130	386	130
362	130	387	130	387	130
363	130	388	130	388	130
364	130	389	130	389	130
365	130	390	130	390	130
366	130	391	130	391	130
367	130	392	130	392	130
368	130	393	130	393	130
369	130	394	130	394	130
370	130	395	130	395	130
371	130	396	130	396	130
372	130	397	130	397	130
373	130	398	130	398	130
374	130	399	130	399	130
375	130	400	130	400	130



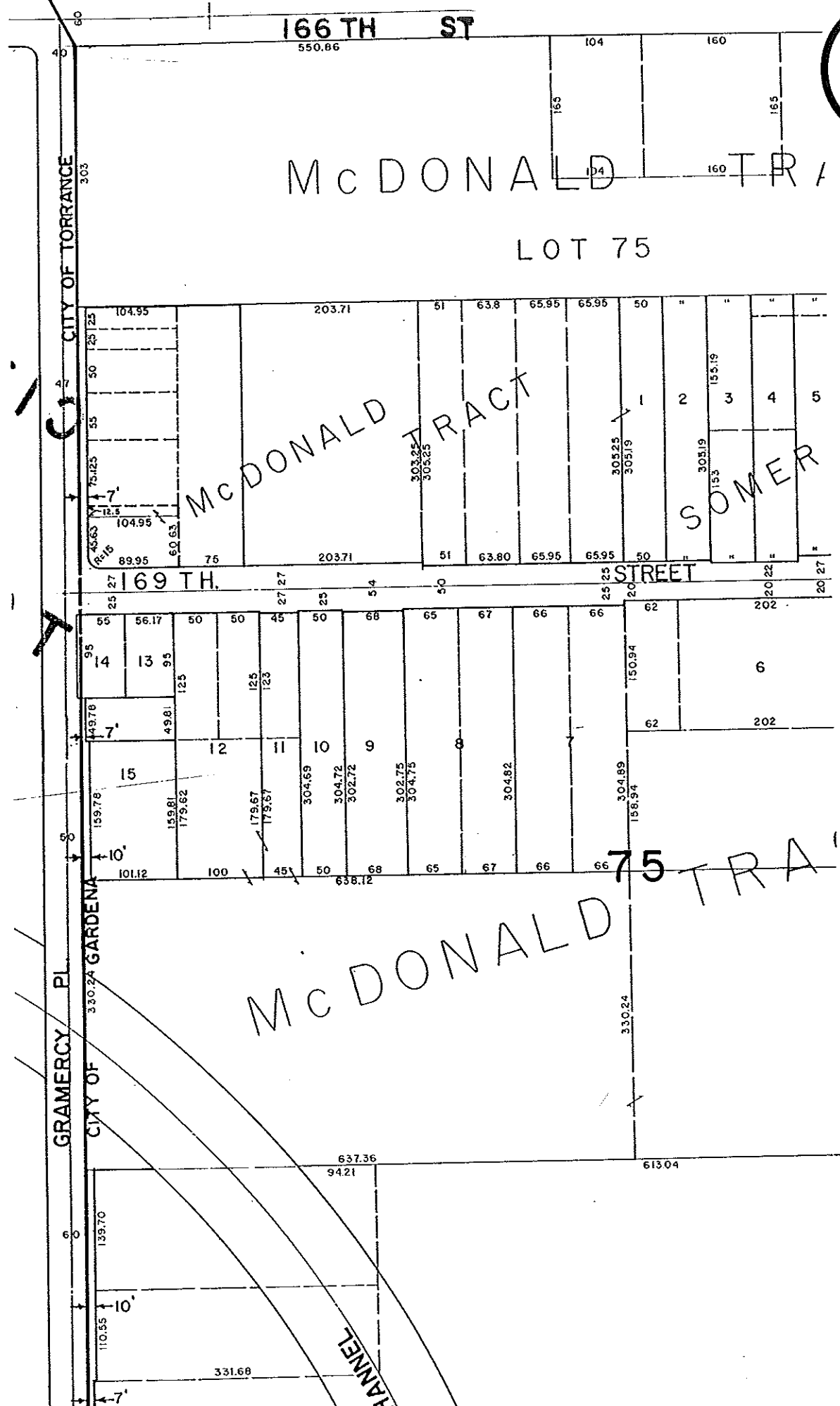


1 120	24	47 102.5	70	93 112.5	126
2 120	25	48 127.5	71	94	127
3 120	26	49	72	95 12.8	128
4 130	27	50 128	73	96 130	129
5 130	28	51 128	74	97	130
6 120	29	52 130	75	98	131



See 31

30



CITY OF TORRANCE

CITY OF GARDENA

166 TH ST

McDONALD TRACT

LOT 75

169 TH STREET

STREET

75 TRACT

McDONALD

CANAL



CITY OF GARDENA

REDONDO BCH

BLVD

CITY OF TORRANCE

TRACT NO. 34358
MB 898 - 97 / 98

TRACT NO. 32338
MB 871 - 32 / 33

TRACT NO. 31930
MB 898 - 16 / 17

LOT 2
M.R. 70-93

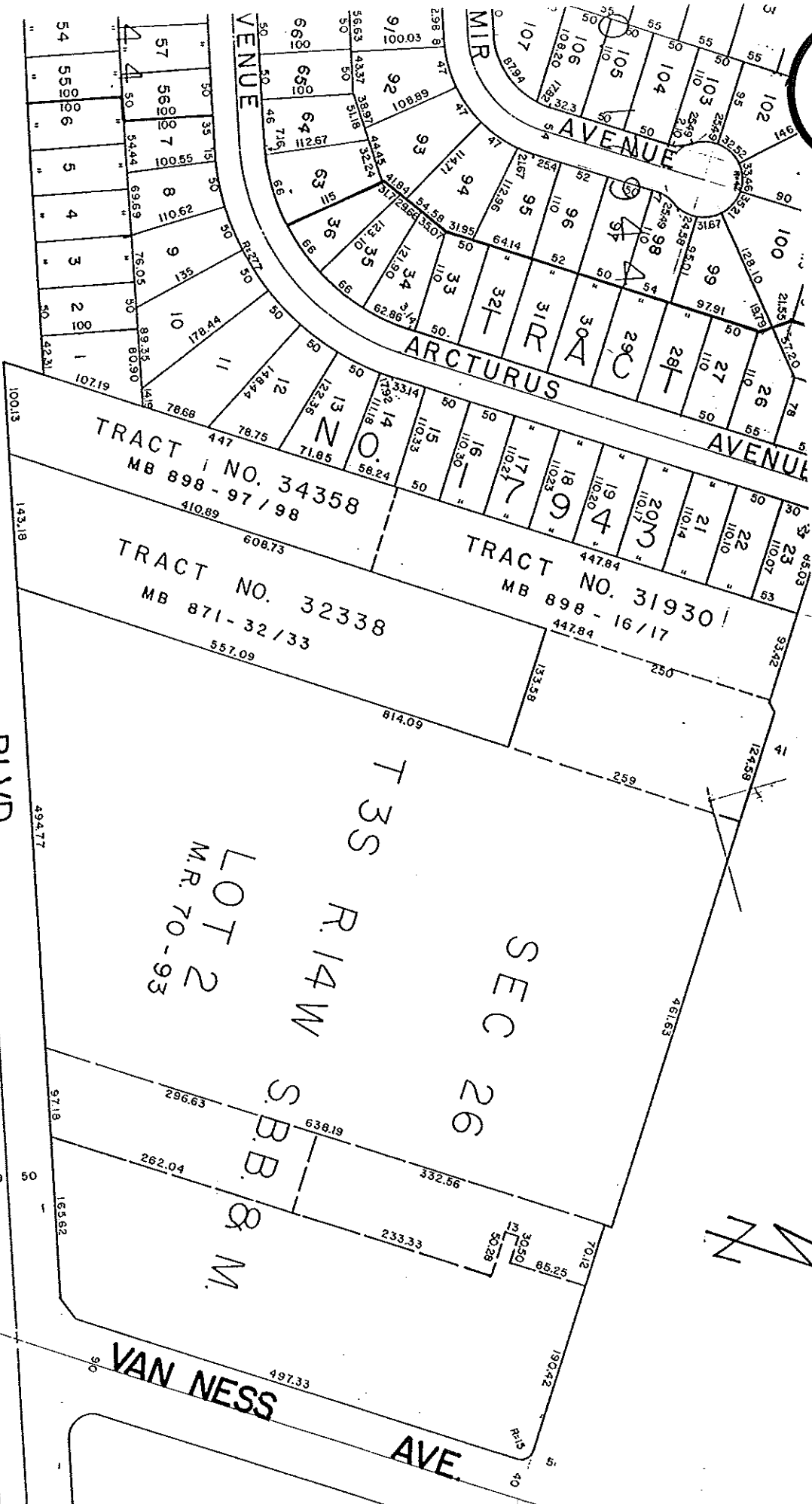
T 3 S R. 14 W

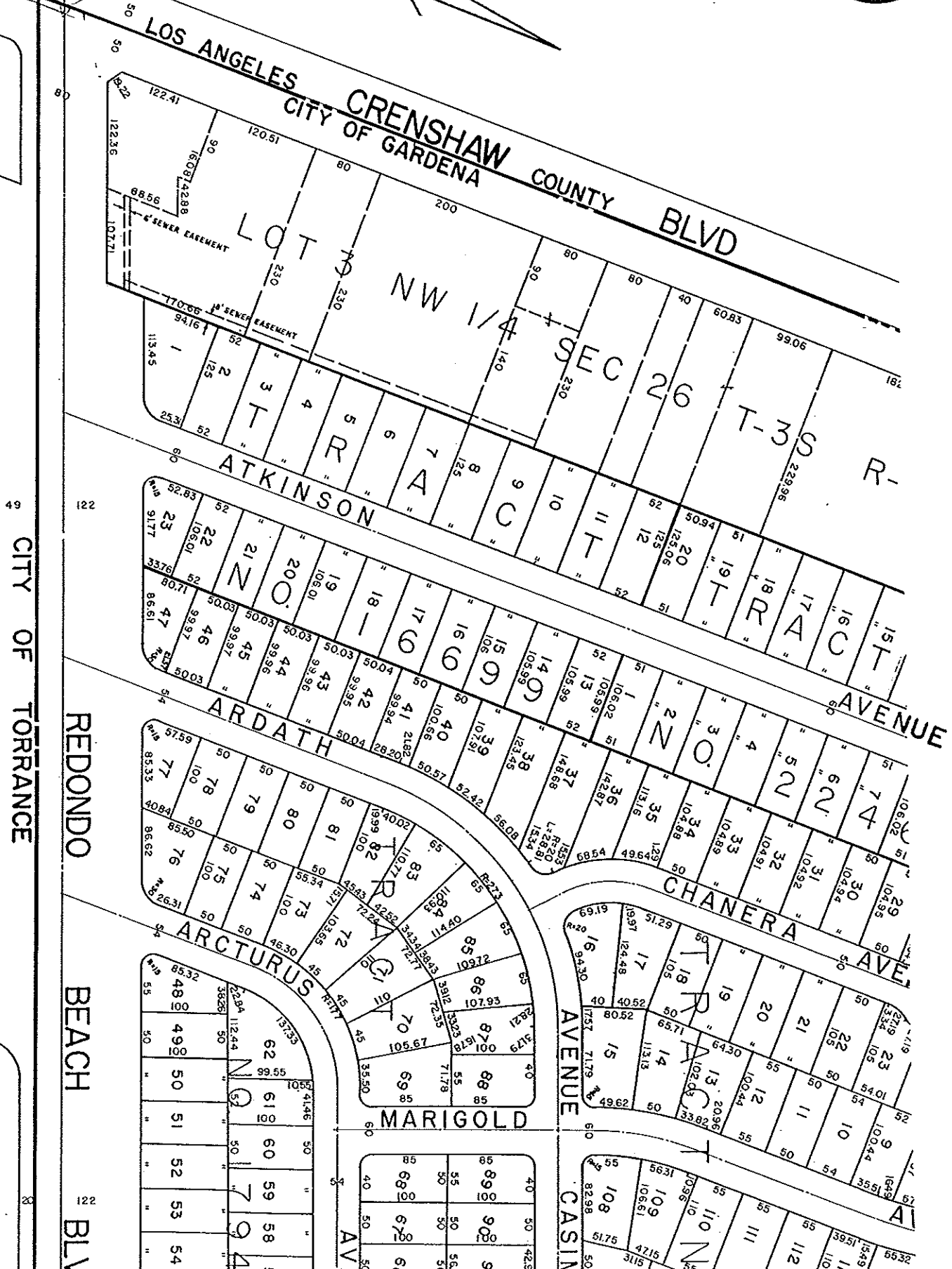
SEC 26

S. B. R. & M.

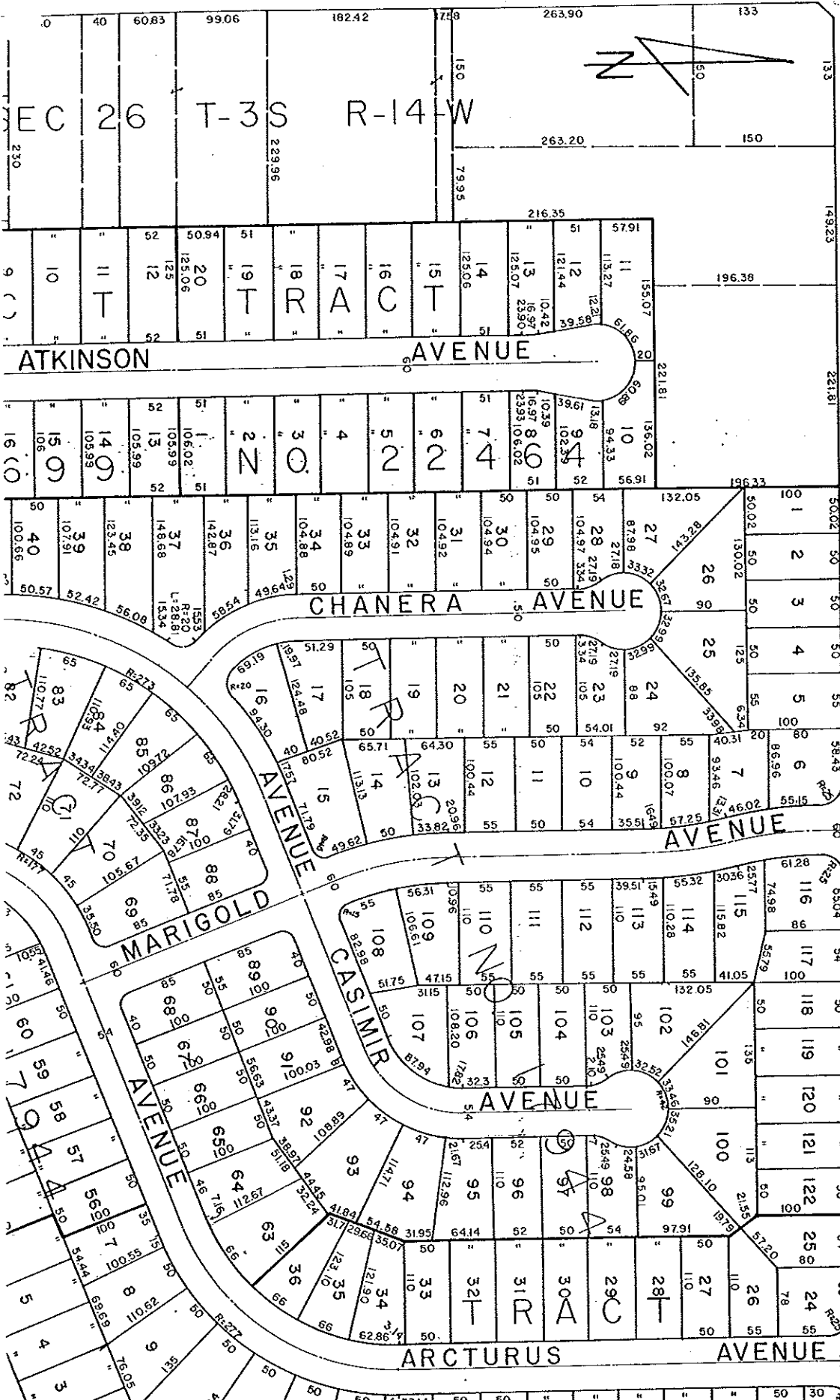
VAN NESS

AVE.





CRENSHAW COUNTY BLVD. OF LOS ANGELES
CITY OF GARDENA



MANHATTAN

BEACH BL.

LOS ANGELES COUNTY

CRENSHAW BLVD
CITY OF GARDENA

175 140 108.02	172 137 100	136 100 85.01	134 99 100	98 85.01	96 6
----------------------	-------------------	---------------------	------------------	-------------	---------

1 100.16	2 100.16	3 100.16	4 100.16	5 100.16	6 100.16	7 100.16	8 100.16	9 100.16	10 100.16	11 100.16	12 84.29	13 110.18	14 110.18	15 110.18	16 110.18	17 110.18	18 110.18	19 110.18	20 106.12
-------------	-------------	-------------	-------------	-------------	-------------	-------------	-------------	-------------	--------------	--------------	-------------	--------------	--------------	--------------	--------------	--------------	--------------	--------------	--------------

21 100.16	22 100.16	23 100.16	24 100.16	25 100.16	26 100.16	27 100.16	28 100.16	29 100.16	30 100.16	31 77.43	32 106.41	33 110.18	34 110.18	35 110.18	36 110.18	37 110.18	38 56.31	39 46.91	40 55	41 55	42 55	43 55	44 55	45 55	46 55	47 55	48 55	49 55	50 55	51 55	52 55	53 55	54 55	55 55	56 55	57 55	58 55	59 55	60 55	61 55	62 55	63 55	64 55	65 55	66 55	67 55	68 55	69 55	70 55	71 55	72 55	73 55	74 55	75 55	76 55	77 55	78 55	79 55	80 55	81 55	82 55	83 55	84 55	85 55	86 55	87 55	88 55	89 55	90 55	91 55	92 55	93 55	94 55
--------------	--------------	--------------	--------------	--------------	--------------	--------------	--------------	--------------	--------------	-------------	--------------	--------------	--------------	--------------	--------------	--------------	-------------	-------------	----------	----------	----------	----------	----------	----------	----------	----------	----------	----------	----------	----------	----------	----------	----------	----------	----------	----------	----------	----------	----------	----------	----------	----------	----------	----------	----------	----------	----------	----------	----------	----------	----------	----------	----------	----------	----------	----------	----------	----------	----------	----------	----------	----------	----------	----------	----------	----------	----------	----------	----------	----------	----------	----------	----------

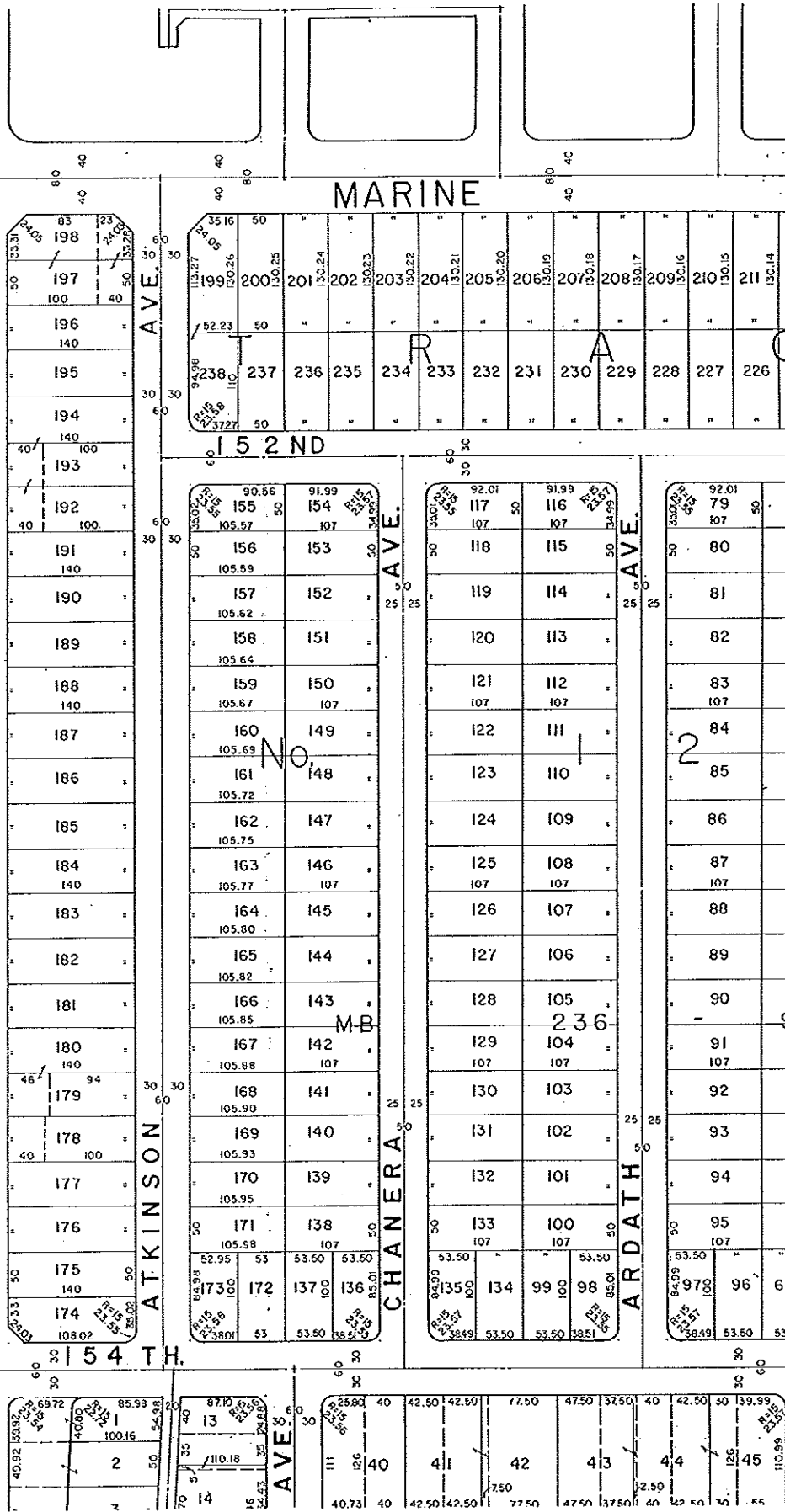
MANHATTAN
BEACH BL.



COUNTY OF LOS ANGELES

CRENSHAW BLVD.

CITY OF GARDENA



BLVD COUNTY OF LOS ANGELES

CRENSHAW

CITY OF GARDENA

14608	54
14610	54
14612	65
14614	66
14618	66
70	67
14626	69
60	69

8279	51.50	51.50	50	54
14602	26	2816	2812	2806
14610	25	2812	2806	3002
14616	24	2309	22903	2821
24	2309	22903	2821	2017
24	2309	22903	2821	192811



25	26
24	27
14700	14733
23	22
22	14751
21	14767
20	14783
14730	14801
19	14817
18	14835
14800	14851
14812	14867
16	14885
14	14893
13	14905
14946	14917
12	14933
11	14949
14948	14965
9	14981
14950	15001
8	15017
14952	15033
7	47
6	45
14990	15033
4	47
3	45
15000	49
1	35

14700	14701
73	74
14716	14717
72	75
14732	14733
71	76
14750	14751
70	77
14766	14767
69	78
14782	14783
68	79
14800	14801
67	80
14816	14817
66	81
14832	14835
65	82
14850	14851
64	83
14866	14867
63	84
14882	14885
62	85
14892	14893
61	86
14904	14905
60	87
14916	14917
59	88
14932	14933
58	89
14948	14949
57	90
14964	14965
56	91
14980	14981
55	92
15000	15001
54	93
15016	15017
53	94
15032	15033
52	95
51	96
50	97

14700	14701
122	123
14716	14717
121	124
14732	14733
120	125
14750	14751
119	126
14766	14767
118	127
14782	14783
117	128
14800	14801
116	129
14816	14817
115	130
14832	14835
114	131
14850	14851
113	132
14866	14867
112	133
14882	14885
111	134
14892	14893
110	135
14904	14905
109	136
14916	14917
108	137
14932	14933
107	138
14948	14949
106	139
14964	14965
105	140
14980	14981
104	141
15000	15001
103	142
15016	15017
102	143
15032	15033
101	144
15051	15051
100	145
15066	15067
99	146
15082	15082
98	147
2701	147

AVENUE

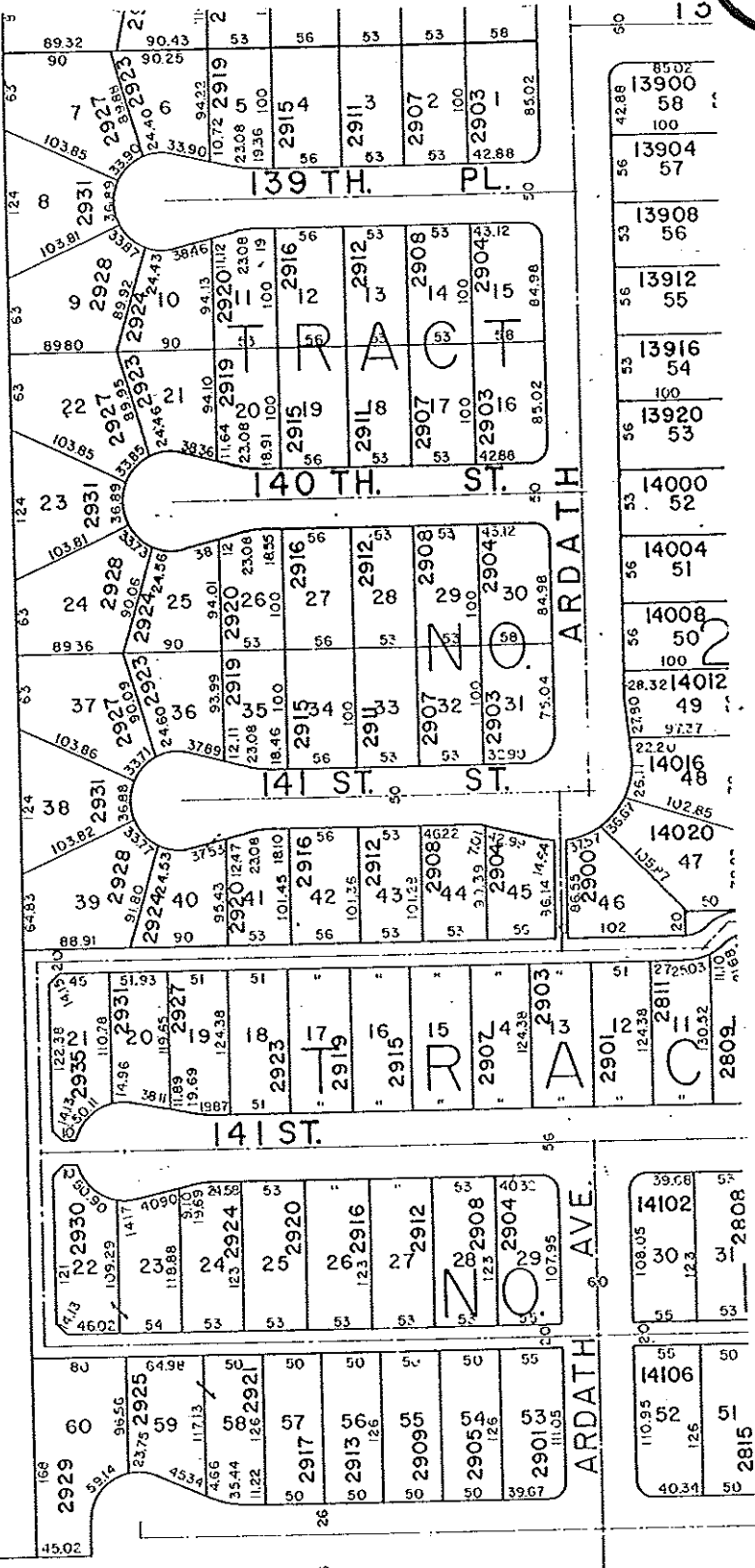
MARIGOLD



CITY OF HAWTHORNE
CRENSHAW
 BLVD
 CITY OF GARDENA

24
13990
13994
13996
13998
21
20
14000
19
18
14008
17
16
14030
15
14
14044
13
14048
12
14050
11
14056
10
14100
9
14106
8
14108
7
14112
6
14150
5
14160
4
14170
3
2
1

FLOOD CONTROL CHANNEL



RENSHAW

CITY OF HAWTHORNE
CITY OF GARDENA

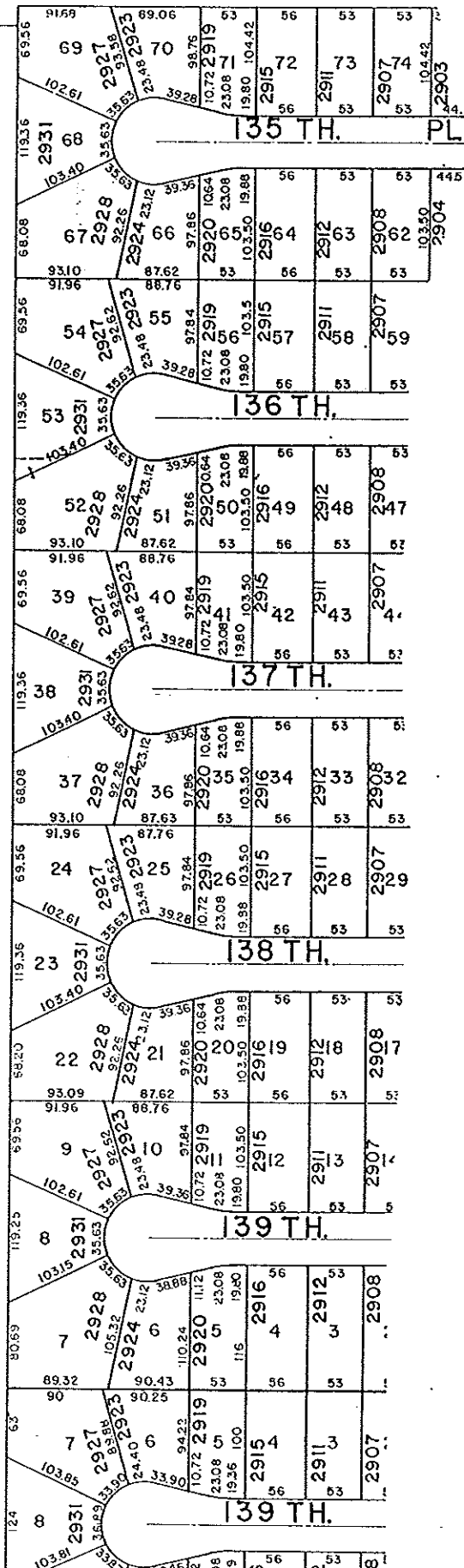
BLVD.

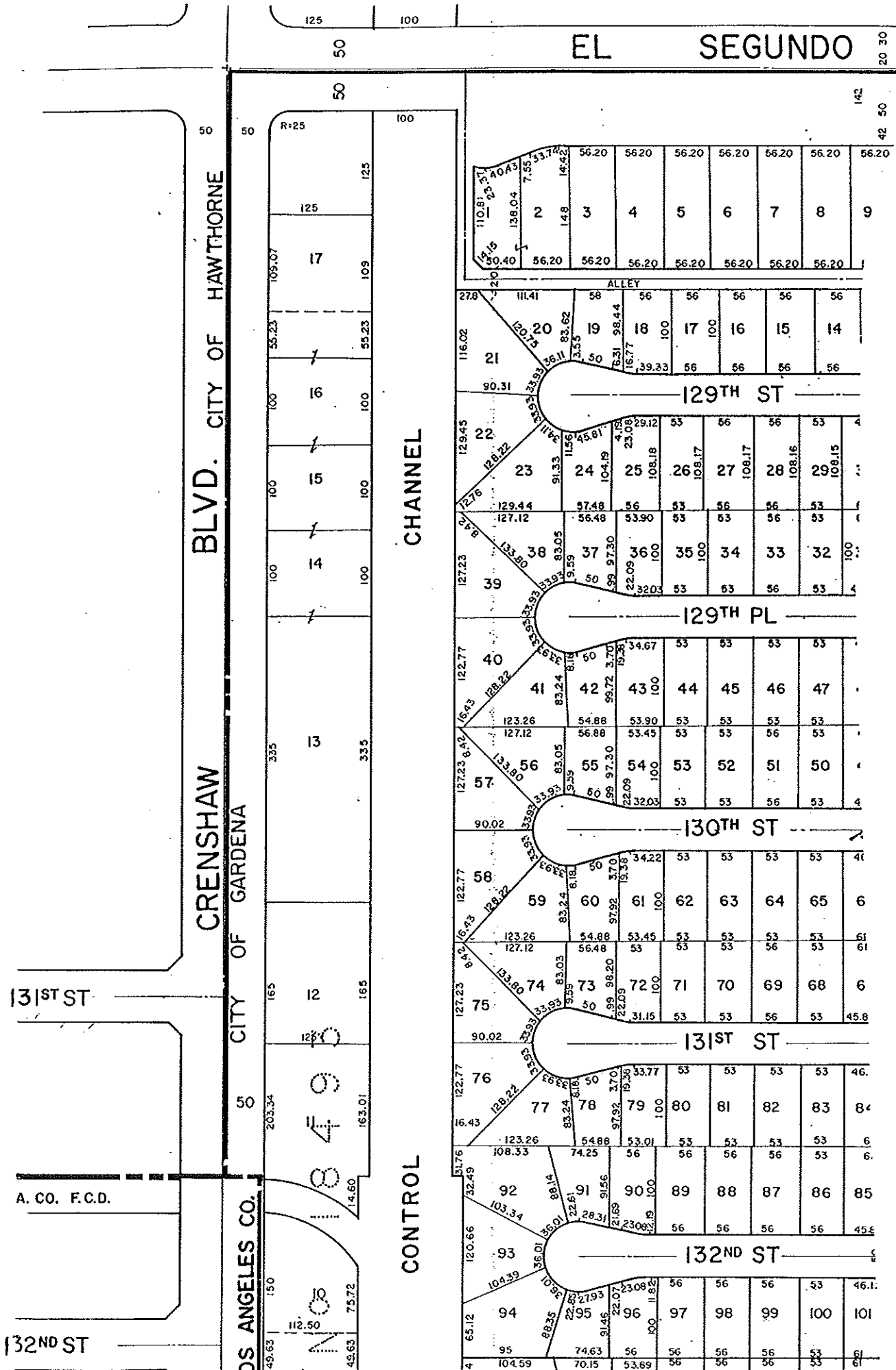
8749	24
112.50	23
13500	22
21	13510
20	13514-18
19	13520-22
18	24
17	13600
16	13610
15	13620
14	13700
13	13780
12	13800
11	13900
10	13904
9	13920
8	13990
7	13994
6	13996
5	13998
4	21
3	
2	
1	
25	

FLOOD

CONTROL

CHANNEL





CHANNEL CONTROL

CHANNEL CONTROL

