



What is a General Plan Update?

Long-range plan guiding a city's future growth and development

Reflects community priorities, values, and needs

Required by California law for all cities and counties

Includes 8 elements: Land Use, Circulation, Housing, Open Space, Conservation, Safety, Noise, and Environmental Justice



The City of Gardena is updating the Community Resources Element of the General Plan which includes the Open Space and Conservation Plans. These updates will guide how Gardena will preserve, expand, and maintain its parks and natural resources.

Note: The elements shown represent a generic overview of State-mandated General Plan elements. Some elements may be combined under different chapter titles. For example, the Open Space Plan and Conservation Plan are consolidated within the Community Resources Element; and the Noise and Safety Elements are consolidated within the Community Safety Element. Refer to the City of Gardena's General Plan webpage for the complete plan structure.

Project Schedule:

Existing Conditions

March 2026 to June 2026

Goals and Policies

May 2026 to June 2026

Administration Draft

August 2026 to September 2026

Public Review Draft

September 2026 to October 2026

Adoption Hearings

October 2026 to November 2026



The Open Space Plan

Focus on Senate Bill 1425

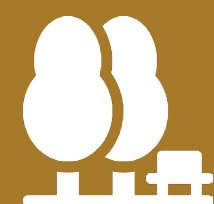
State law requires cities to update their Open Space and Recreation Element to address equitable access, climate resilience, and rewilding.

Key updates for the Open Space Plan Include:

- Assesing current conditions and expanding park access,
- Protecting natural areas while expanding accessible recreation opportunities,
- Supporting public health and climate resilience through well-designed parks and open space.



Total park acreage - **49.4 Acres**

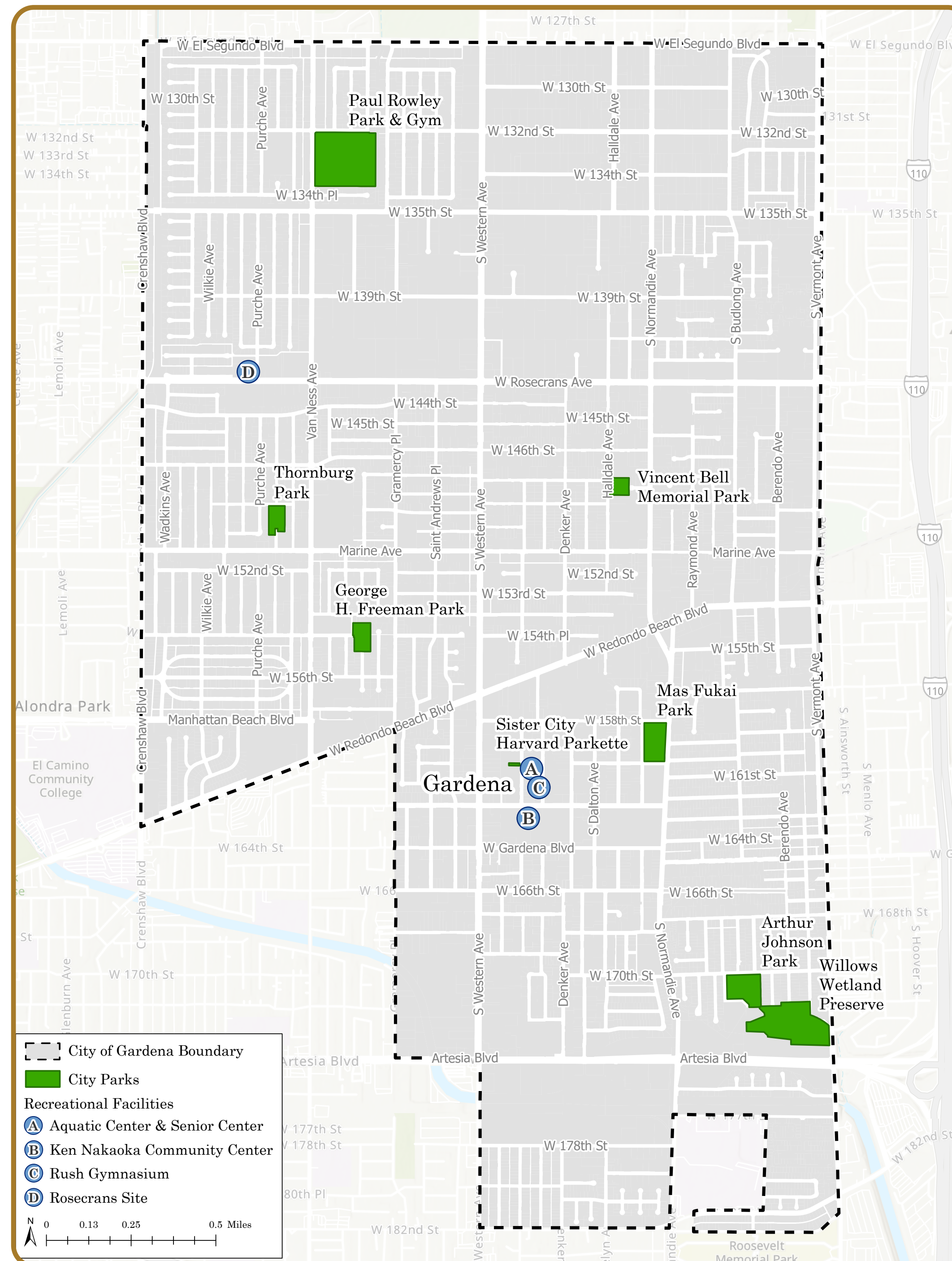


Total parks - **8**

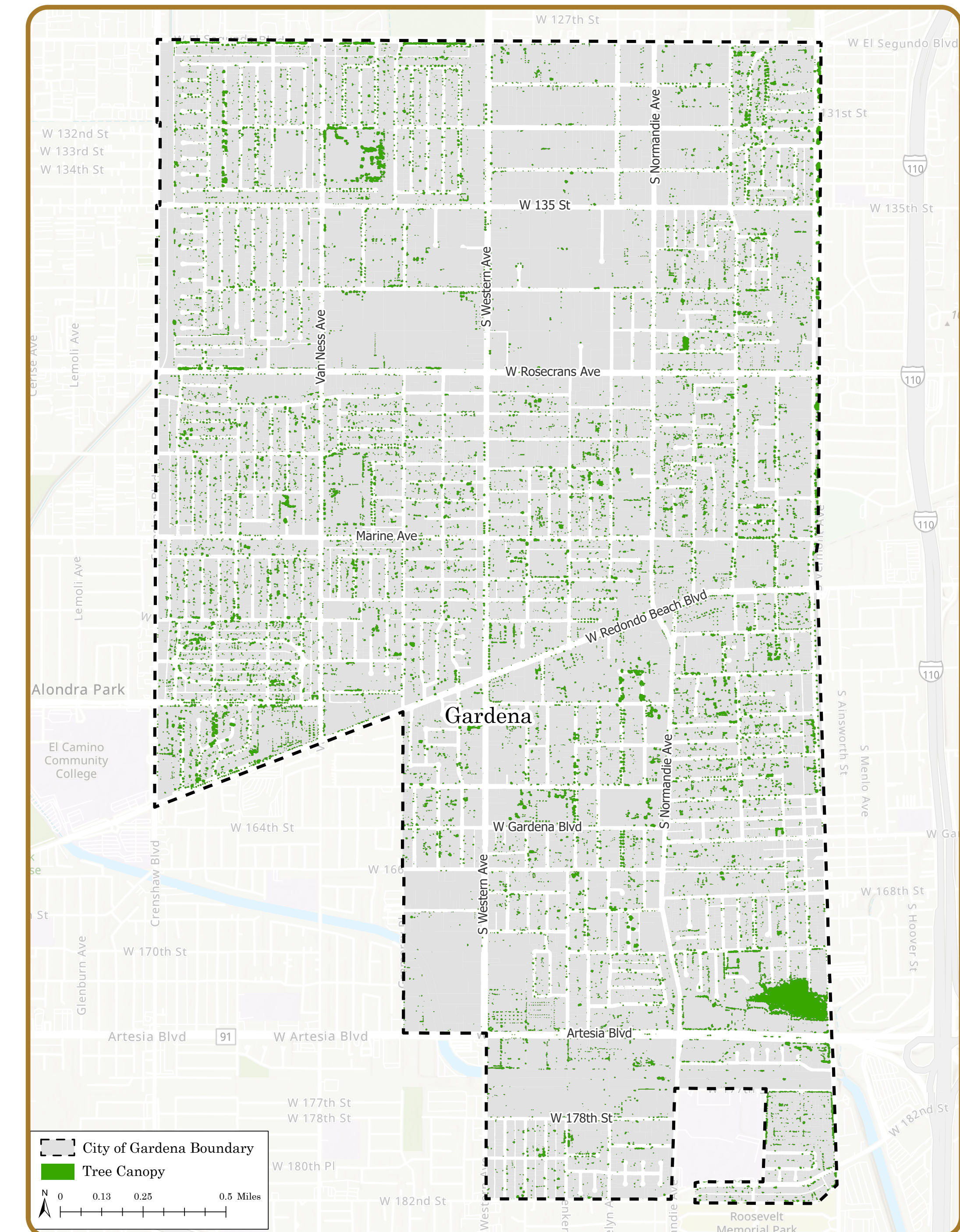


Total recreational facilities - **3**

The Open Space Plan comprises one portion of the Community Resource Element. The Plan focuses on the preservation and expansion of the City's parks, open space, and recreational facilities.



Existing Parks and Recreational Facilities

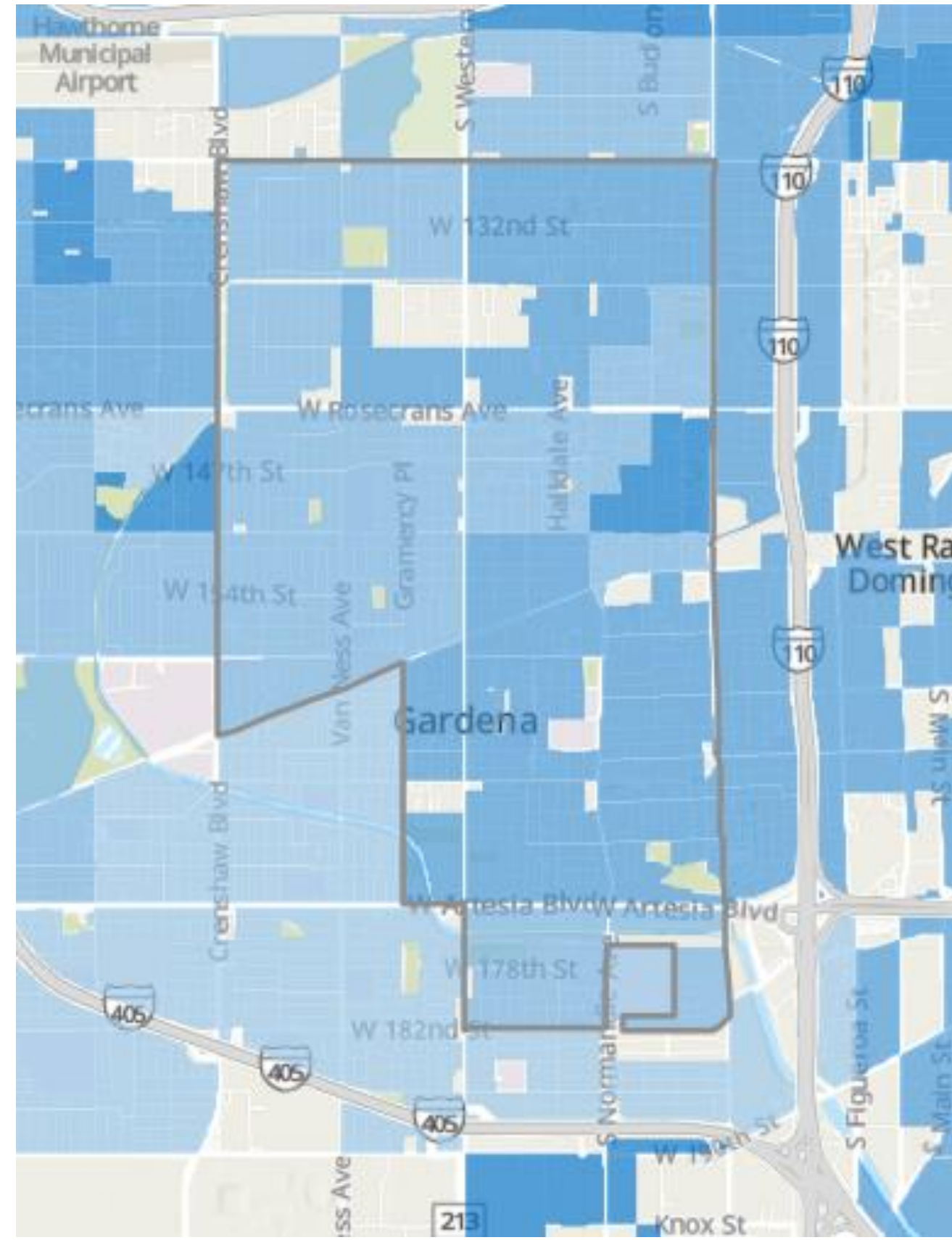


Gardena Tree Canopy



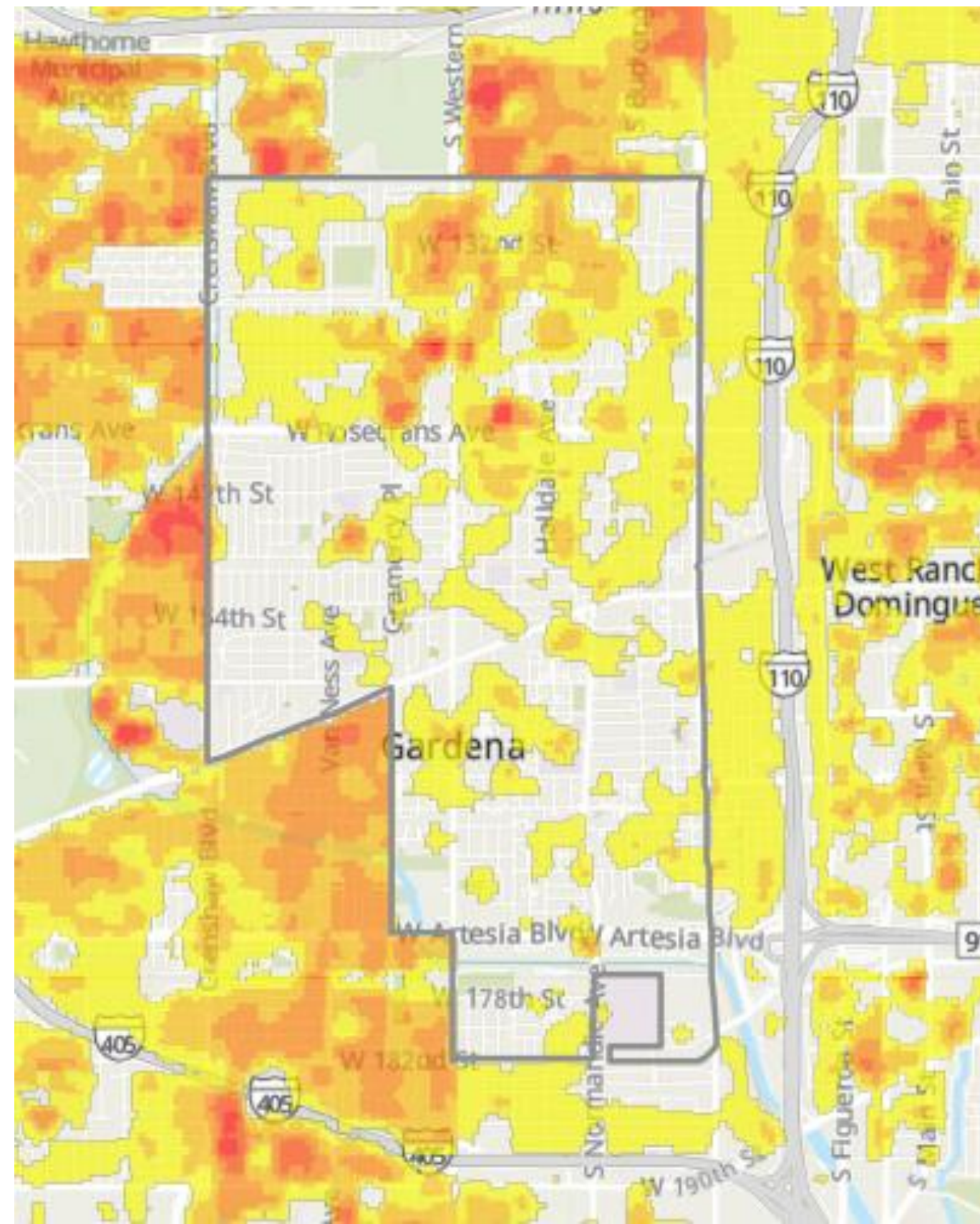
The Open Space Plan

Inactive Households (%)



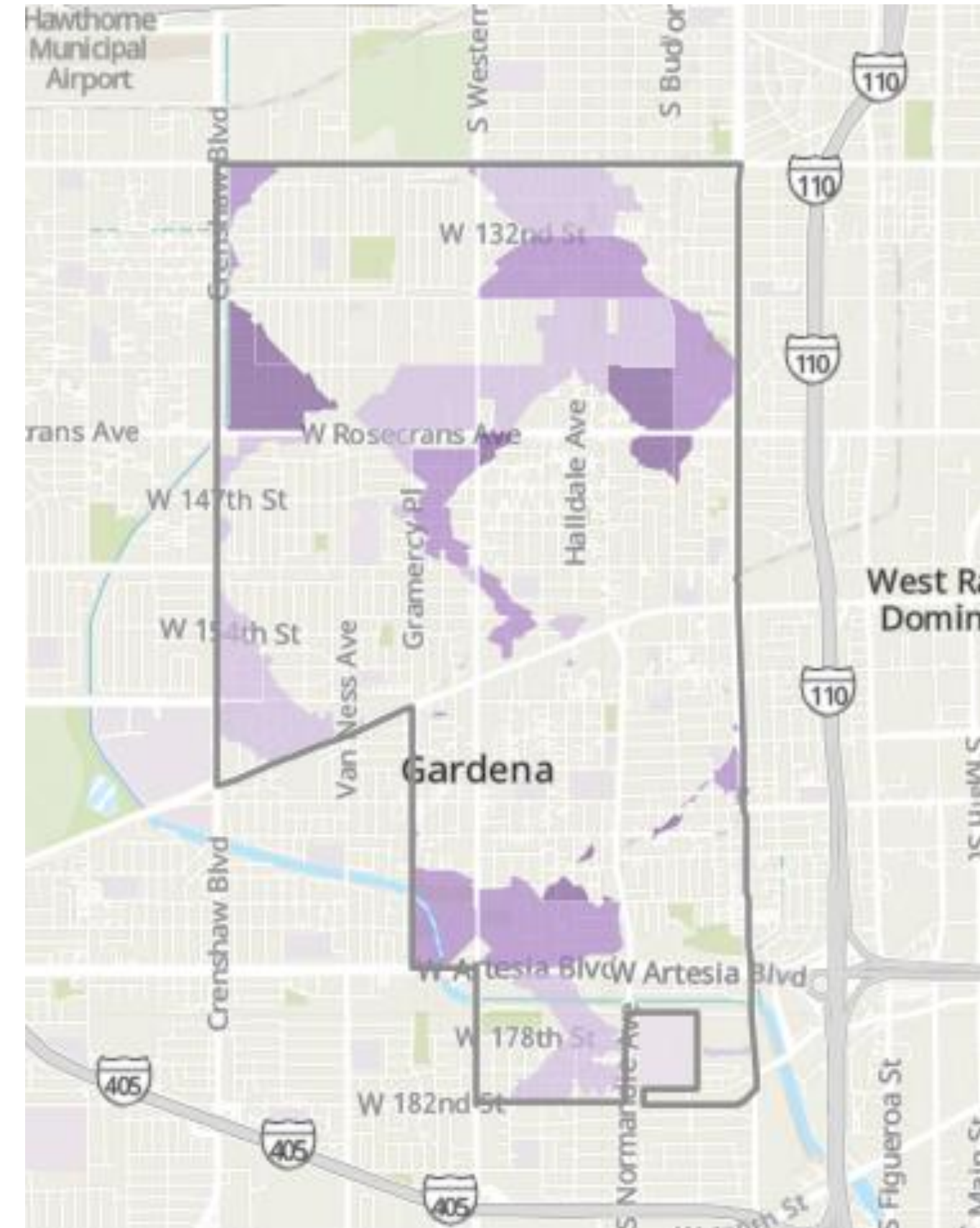
- Very High
- High
- Medium
- Low
- Very Low

Urban Heat Island



- Moderate
- Moderately Severe
- Severe
- Very Severe
- Extreme

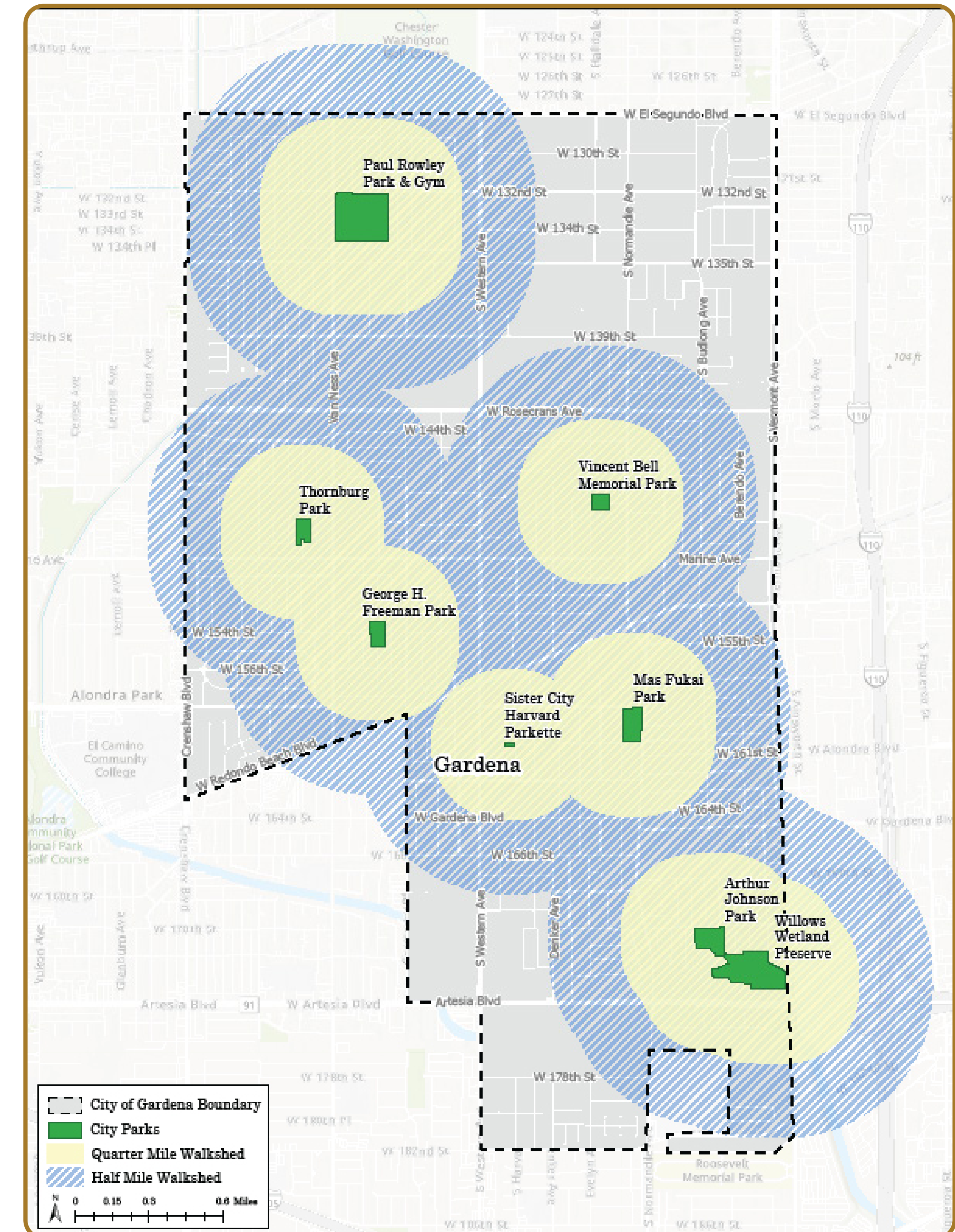
Priority Areas for Parks



Priority Areas for New Parks

- Very High
- High
- Moderate

Access to Gardena Parks



Strong park coverage city-wide

73% of residents live within a 10-minute walk of a park

Fairly active residents

Gardena's walk score - 79 (out of 100)

1-acre of park space per 1,250 city residents

Low number of urban heat islands



The Conservation Plan

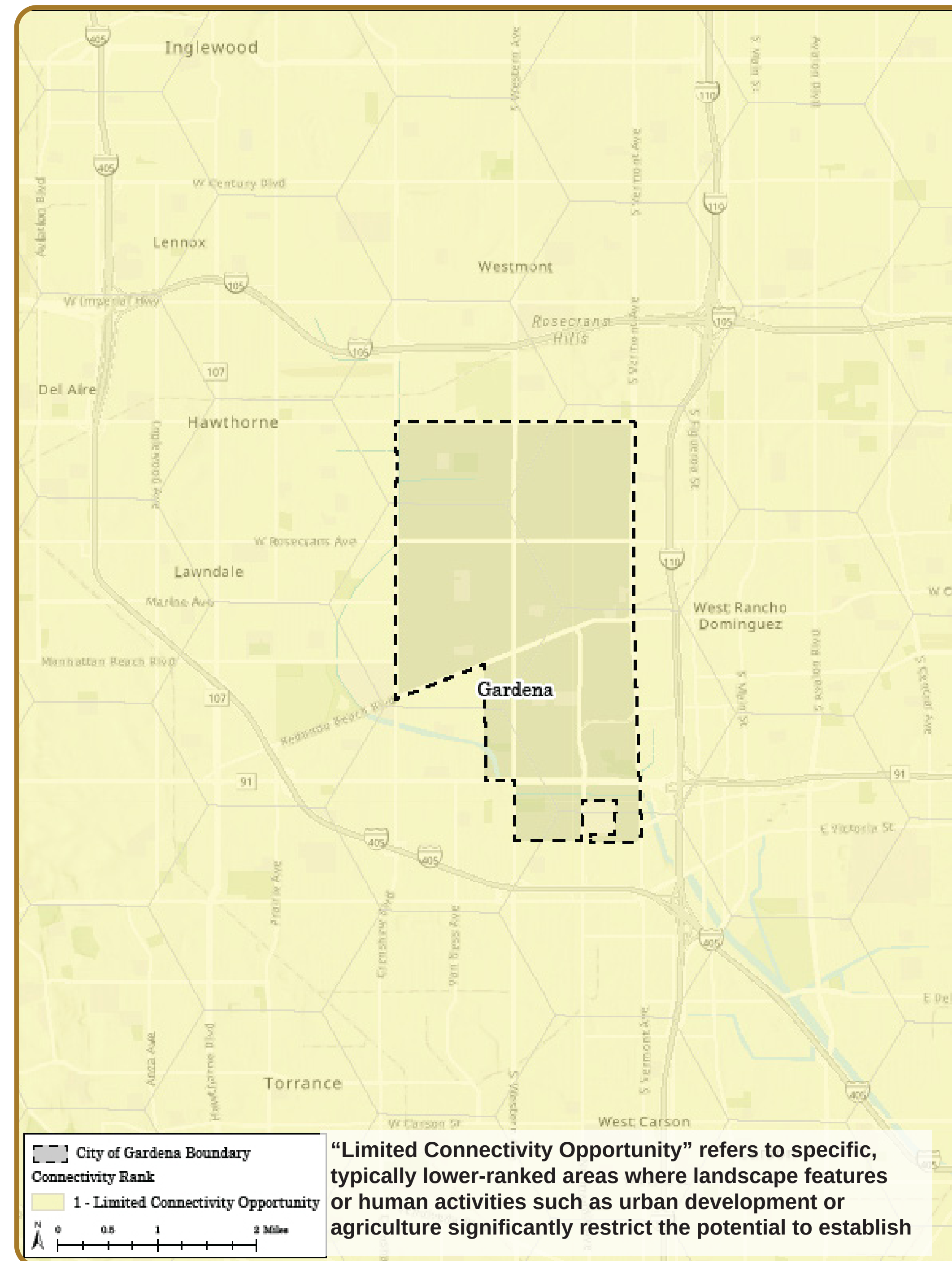
Focus on Assembly Bill 1889

State law requires cities to update the Conservation Element to identify wildlife connectivity areas, evaluate development impacts on wildlife movement, and reduce barriers where feasible.

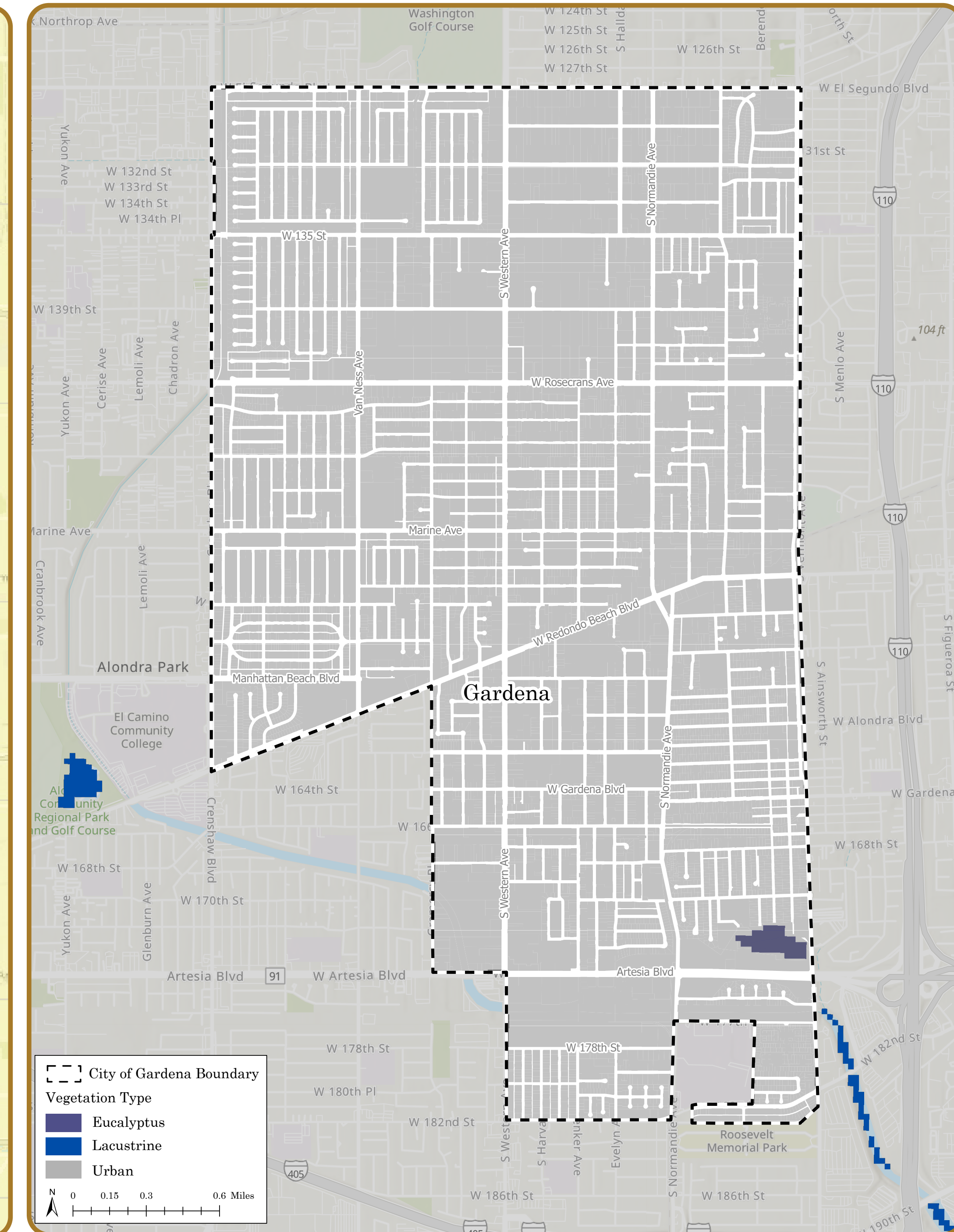
Key updates for the Conservation Plan Include:

- Mapping and defining wildlife corridors to support ecological connectivity,
- Identifying existing and future obstacles that restrict wildlife movement,
- Supporting climate resilience by restoring degraded habitats or removing existing barriers, conserving open lands, reducing GHGs, and adapting to climate change.

The Conservation Plan comprises one portion of the Community Resource Element. The Plan focuses on the protection and sustainable management of natural resources. It also supports ecological connectivity and climate resilience.



Wildlife Connectivity

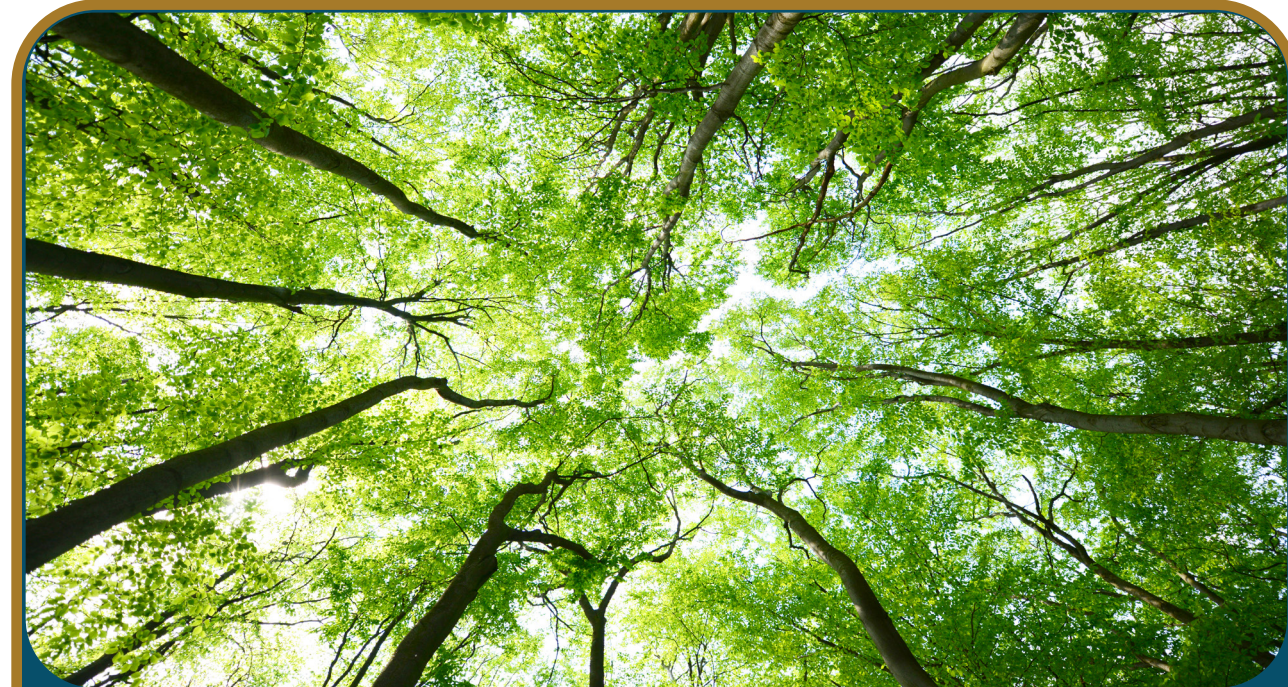


Vegetation



Interactive Exercise - 1

What climate resilience measures do you believe the City should prioritize?



Urban greening and expanded tree canopy for heat reduction



Green infrastructure to reduce flooding



Increase walking, biking, and public transit infrastructure



Energy-efficient buildings, including renewable energy



Urban agriculture and community gardens

Which community facilities and programs are most important to you?



Cultural centers, Museums (art, music, theaters, etc.)



Youth centers and teen spaces



Senior centers and multi-generational hubs



Civic or community centers



Libraries and learning centers



Interactive Exercise - 2

Use the materials provided here to mark the following on either of the two maps:

- Mark your favorite parks, and/or any missing connections (e.g. where you wish there was shade or seating, or where you would like to see recreational activities or trails).
- Identify wildlife sightings, tree canopy gaps, or areas prone to environmental hazards (i.e fire, flooding, or erosion).
- Identify potential corridors for wildlife and pollinator habitats. A pollinator habitat is an area designed or maintained with native plants, shelter, and nesting resources that support bees, butterflies, and other pollinating species.





Interactive Exercise - 3

Use the post-its to provide ideas and strategies for the following:

- Ways to enhance and expand the City's open space, parks, and recreational facilities.
- Ways to protect and improve natural resources, wildlife connectivity, and pollinator habitats.

